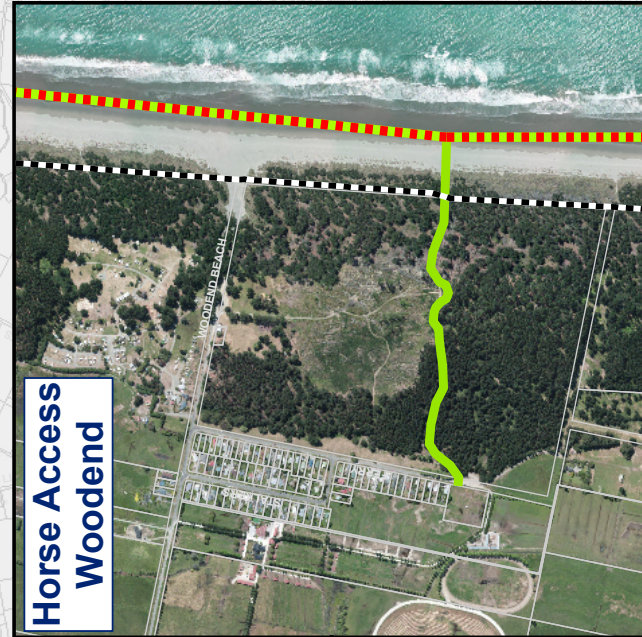
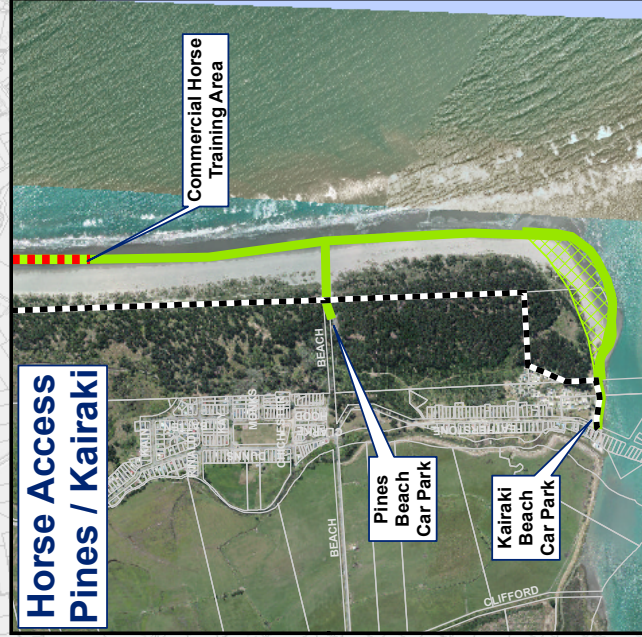


Horse Access Waikuku

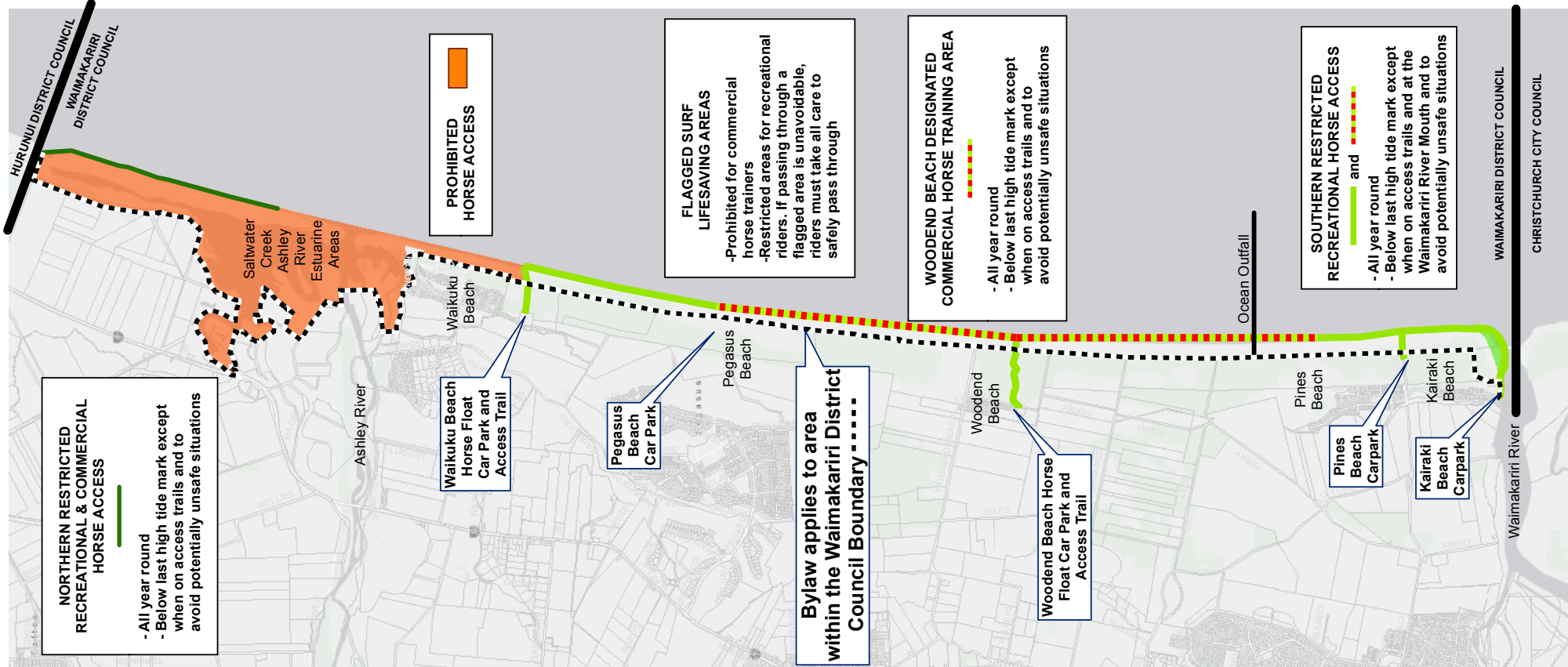
Permit Required Key Access Only



Horse Access Woodend



Horse Access Pines / Kairaki



NORTHERN RESTRICTED RECREATIONAL & COMMERCIAL HORSE ACCESS
 - All year round
 - Below last high tide mark except when on access trails and to avoid potentially unsafe situations

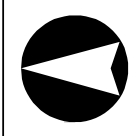
PROHIBITED HORSE ACCESS

FLAGGED SURF LIFESAVING AREAS
 - Prohibited for commercial horse trainers
 - Restricted areas for recreational riders. If passing through a flagged area is unavoidable, riders must take all care to safely pass through

Bylaw applies to area within the Waimakariri District Council Boundary

WOODEND BEACH DESIGNATED COMMERCIAL HORSE TRAINING AREA
 - All year round
 - Below last high tide mark except when on access trails and to avoid potentially unsafe situations

SOUTHERN RESTRICTED RECREATIONAL HORSE ACCESS
 - All year round
 - Below last high tide mark except when on access trails and at the Waimakariri River Mouth and to avoid potentially unsafe situations



Horse riding on the beach?

HERE'S WHAT YOU NEED TO KNOW



The Northern Pegasus Bay Bylaw 2016 is in place to ensure wildlife and the natural environment are not harmed and so that everyone can enjoy the district's beaches. The new bylaw became operative on Monday 15 August 2016 and aims to:

- Manage recreation use for the benefit and enjoyment of all users
- Minimise any negative environmental impact from beach activity
- Promote public health and safety
- Minimise nuisance and offensive behaviour

Thank you for observing the bylaw rules to help protect our environment and to ensure the enjoyment of all beach users

For more information –

waimakariri.govt.nz/beaches

Key rules

- ✓ Do give way and show consideration to people on foot at all times
- ✓ Do stay on the designated horse trails and beach area as shown on the map overleaf
- ✓ When on the beach stay below the last high tide mark unless you have to move to avoid an unsafe situation
- ✓ If you use the horse float carpark take your horse poos home with you
- ✗ **Do not** ride in the Ashley/Rakahuri Estuary area
- ✗ **Do not** ride through a flagged surf life saving area. These operate from approximately 9.30am at Woodend and Pegasus Beaches from mid-December to mid-January.

Northern Pegasus Bay Bylaw 2016