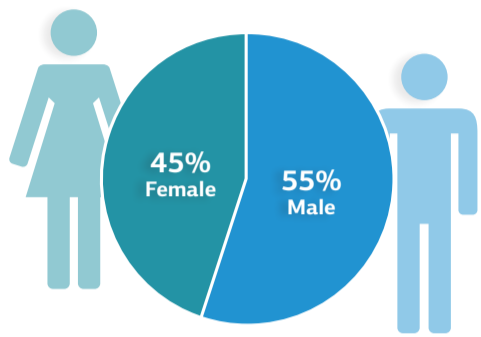


Northern Pegasus Bay Bylaw 2016 Intercept Survey

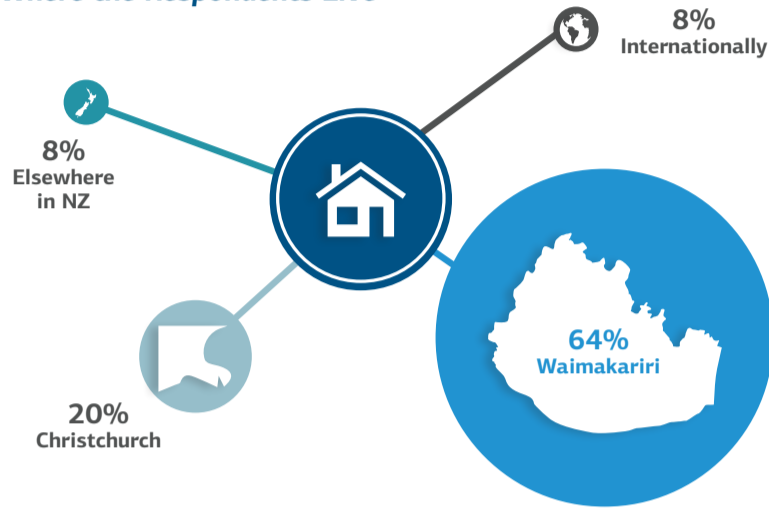
300 beach users were asked for their views on the coastal environment. This is what they told us.

Who Was Asked?

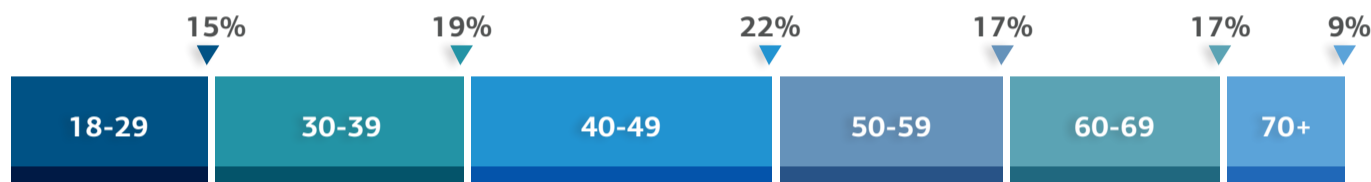
Gender of Respondents



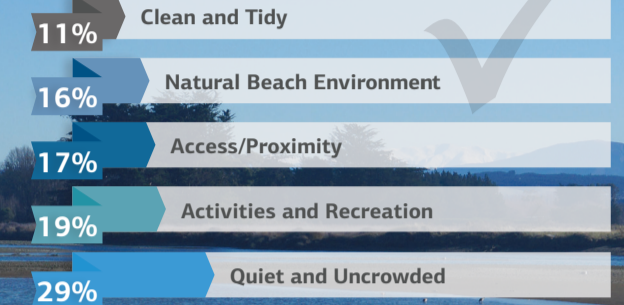
Where the Respondents Live



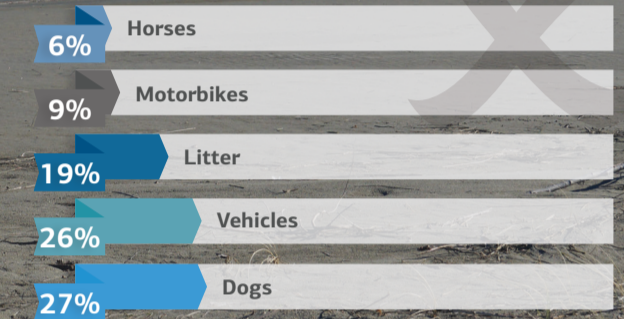
Age of Respondents



What Do They Like?



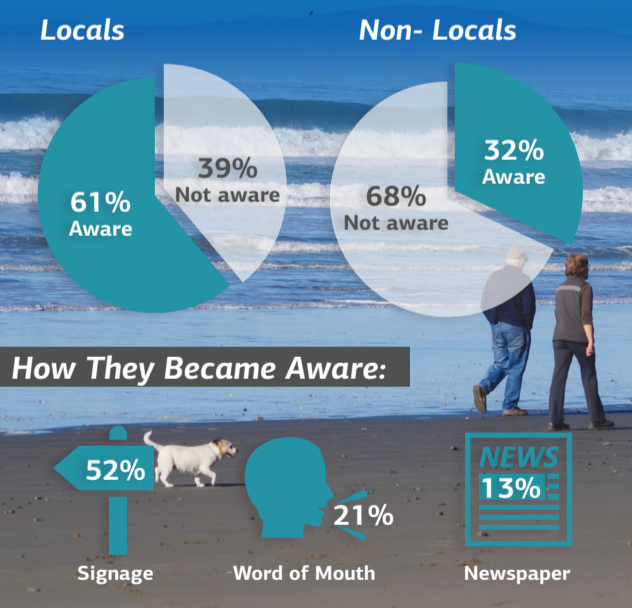
What Don't They Like?



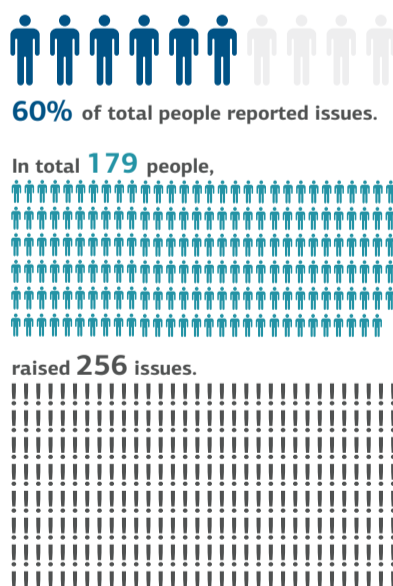
What are the Activities of Respondents in the Northern Pegasus Bay Area?



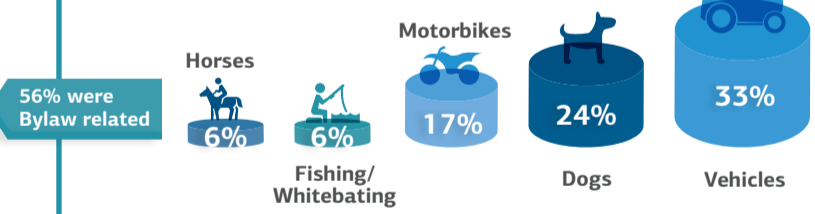
Who is Aware of the Bylaw/Rules?



Issues?



Top 5 Bylaw Related Issues



Top 5 Non-Bylaw Related Issues



“I don't enjoy dogs roaming around the estuary.”

“I like that it's clean, quiet, people are considerate and it's close to nature.”

“I think the main issue is cars driving up and down the beach at speed.”