

**Before the Hearings Panel  
At Waimakariri District Council**

**Under** Schedule 1 of the Resource Management Act 1991

**In the matter of** the Proposed Waimakariri District Plan

**Between** **Health New Zealand - Te Whatu Ora**

**And** **Waimakariri District Council**

**Respondent**

---

**Tabled Statement by Tony Hampton on the Special Purpose Zone (Hospital)  
on behalf of Health NZ - Te Whatu Ora  
Date: 19 February 2024**

---

## 1. Introduction

- 1.1 My name is Tony Hampton. I am the Interim Regional Operations Manager, Infrastructure and Investment Group Te Waipounamu for Health New Zealand - Te Whatu Ora (Health NZ).
- 1.2 For clarity, the Canterbury District Health Board made a submission on the Proposed Waimakariri District Plan (Submitter number 68) in late 2021. Since that time the staff involved in the submission have changed and the organisation has undergone structural change and a change in name. It is currently called Health New Zealand – Te Whatu Ora. I therefore request that our organisation is called Health New Zealand – Te Whatu Ora (or a suitable abbreviation) in documentation going forward and I note that the s42A officer for the Special Purpose (Hospital) Zone acknowledged this name change in her report (paragraph 33).
- 1.3 My intention with this statement is to provide a brief background to Health NZ's operations and facilities in the Waimakariri District and our submission, and to confirm that we support the s42A Officer's recommendations to accept all of Health NZ's submission points on the proposed Special Purpose Zone (Hospital).

## 2. Health NZ's Operations in the Waimakariri District

- 2.1 Health New Zealand Waitaha has a duty to improve, promote and protect the health of the people in the community and foster the wellbeing and independence of people of the Waimakariri District.

**Oxford Hospital** has 15 beds, providing a variety of health services for the Oxford community and surrounding districts including four beds for convalescing post surgery, acute admissions and palliative care; and eight beds for people who require long-stay care with permanent hospital level care. There are also three beds for short term hospital level relief care for people whose family or care givers need a break.

The Rangiora Health Hub is the centre in North Canterbury for a range of health and community services. These include:

- primary birthing and postnatal care at the Rangiora Maternity Unit, with 3 birthing rooms (2 with birthing pools available), 10 postnatal rooms and 4 assessment rooms

- dental treatment for school-age children at the Rangiora Community Dental Clinic, with two treatment suites
- public health nursing, community mental health care and various other specialist outpatient services.

Health New Zealand has also entered into an agreement to lease land with a private consortium providing a GP Medical Centre South Link Health Services on the Rangiora Health Hub site.

### 3. Health NZ's Submission

3.1 A representative of the Council met with my predecessor to discuss the proposed special purpose hospital zone. As part of that we provided advice on our development plans for the sites and on appropriate activity and built form standards, as well as definitions and the zone extent. I would like to thank the Council for engaging with us as part of the chapter preparation

3.2 The proposed Special Purpose Zone (Hospital) provisions are consistent with our discussions and advice, and as a consequence, our submission was in support of the chapter and its provisions.<sup>1</sup> We are pleased that the s42A officer has chosen to accept all of our submissions on the zone provisions and related definitions and retain them as notified. This is important to Health NZ to support our ongoing operations. I consider it is also important to the Waimakariri District community as health services are an important public good.

3.3 The only matters Health NZ opposed are in relation to DEV-NRG-APP1 (submission point 68.21) and DEV-NRG-R2 (submission point 68.22). DEV-NRG-APP1 shows a stormwater management area on the Rangiora Hospital site, but Health NZ may wish to intensify hospital activities on its site, consistent with SPZ(HOS)-O1 and P1, and this stormwater management area reduces this potential. DEV-NRG-R2 requires development to be in accordance with DEV-NRG-APP1 (the Outline Development Plan). Our submission noted that the area is not currently a formed stormwater management area. For clarity I have included snips of the sites, their zoning in the Proposed Plan and DEV-NRG-APP1 in **Attachment 1**.

3.4 I anticipate that this stormwater management matter will be the subject of a separate hearing as these submission points were not covered in the Special Purpose

---

<sup>1</sup> For clarity, our submission also supported specific related district wide provisions such as for noise, signage and light.

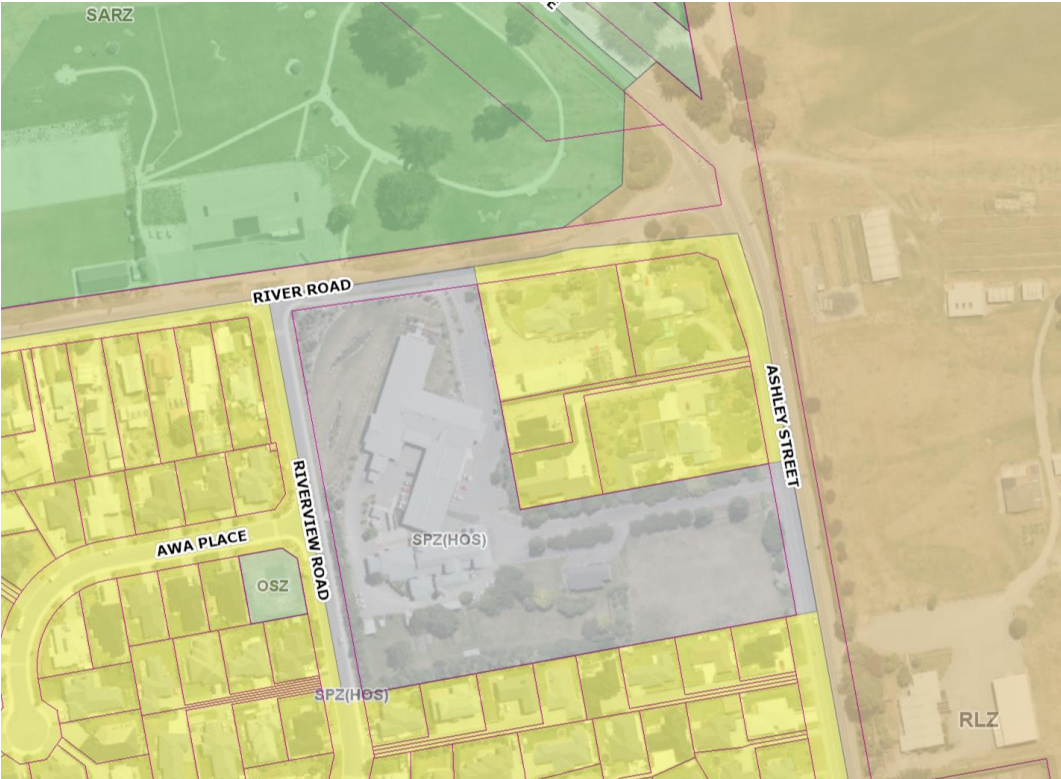
Zone (Hospital) s42A report. It is our intention to provide comments on this matter at that hearing if required.

A handwritten signature in black ink, appearing to be 'Tony Hampton', written in a cursive style.

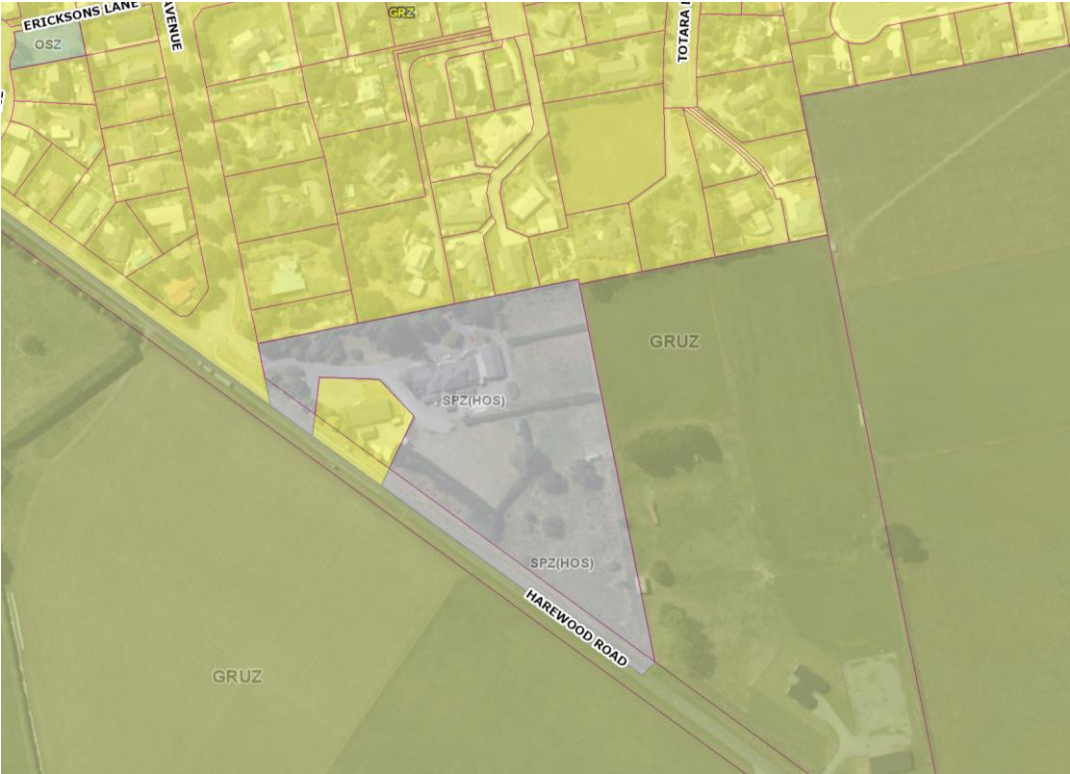
Tony Hampton

**Attachment 1 – Health NZ Sites in Waimakariri and DEV-NRG-APP1**

**Rangiora Hospital**



**Oxford Hospital**



# DEV-NRG-APP1

DEV-NRG-APP1 - North Rangiora ODP

