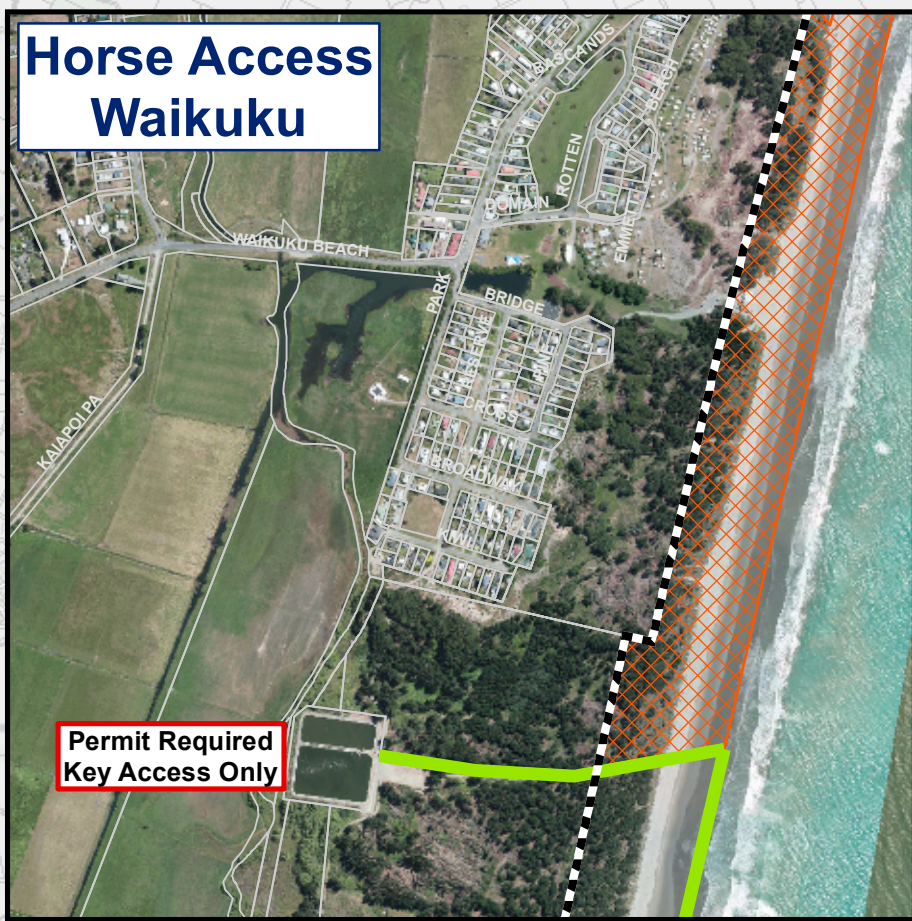


### Horse Access Waikuku

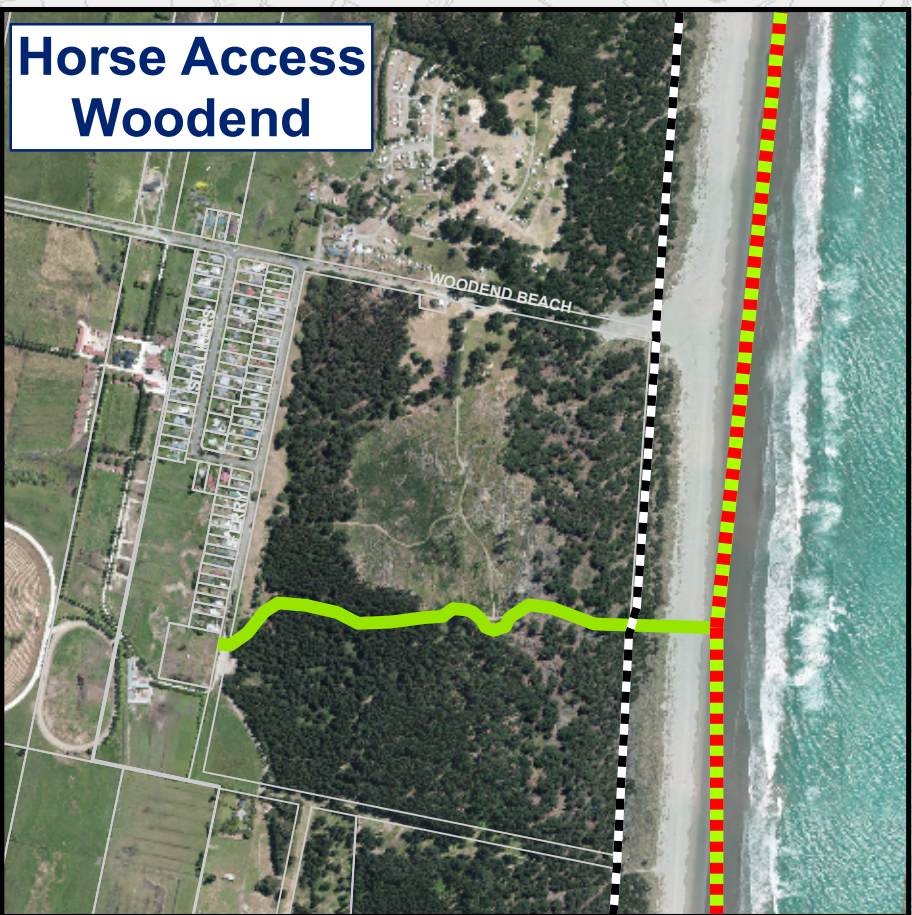


Permit Required Key Access Only

### NORTHERN RESTRICTED RECREATIONAL & COMMERCIAL HORSE ACCESS

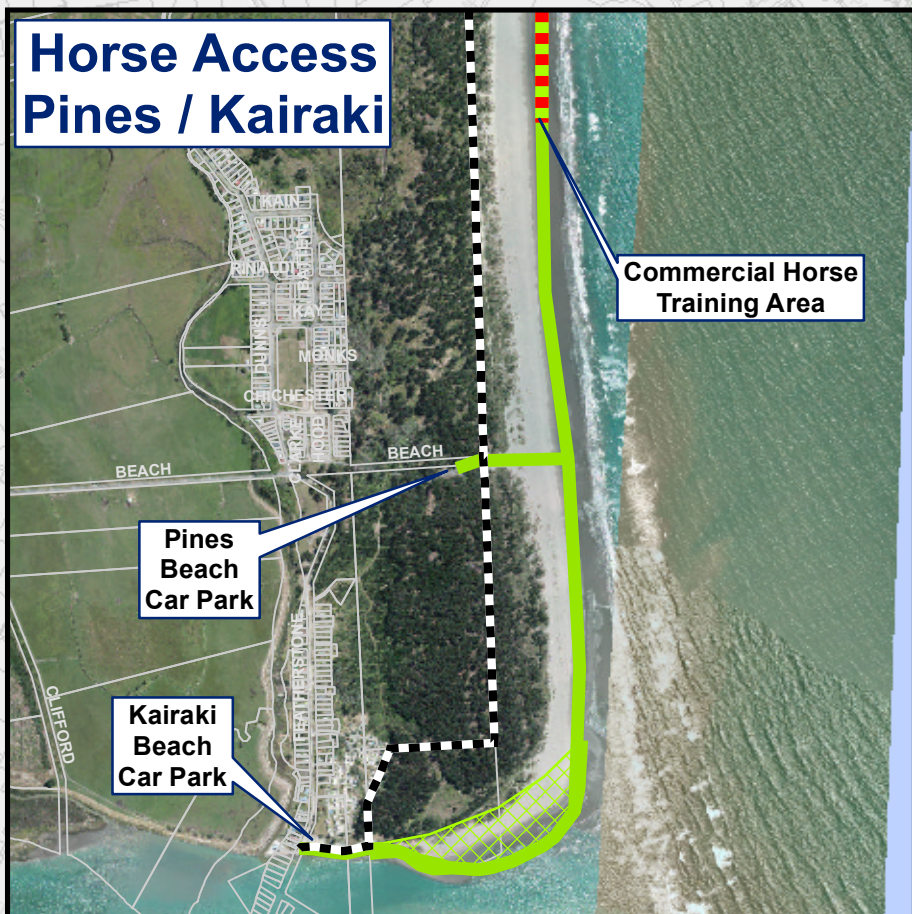
- All year round
- Below last high tide mark except when on access trails and to avoid potentially unsafe situations

### Horse Access Woodend



Bylaw applies to area within the Waimakariri District Council Boundary

### Horse Access Pines / Kairaki



Commercial Horse Training Area

Pines Beach Car Park

Kairaki Beach Car Park

Saltwater Creek Ashley River Estuarine Areas

Waikuku Beach Horse Float Car Park and Access Trail

Waikuku Beach

PROHIBITED HORSE ACCESS

Pegasus Beach Car Park

Pegasus Beach

### FLAGGED SURF LIFESAVING AREAS

- Prohibited for commercial horse trainers
- Restricted areas for recreational riders. If passing through a flagged area is unavoidable, riders must take all care to safely pass through

### WOODEND BEACH DESIGNATED COMMERCIAL HORSE TRAINING AREA

- All year round
- Below last high tide mark except when on access trails and to avoid potentially unsafe situations

Woodend Beach Horse Float Car Park and Access Trail

Woodend Beach

Ocean Outfall

Pines Beach Carpark

Pines Beach

Kairaki Beach Carpark

Kairaki Beach

### SOUTHERN RESTRICTED RECREATIONAL HORSE ACCESS

- All year round
- Below last high tide mark except when on access trails and at the Waimakariri River Mouth and to avoid potentially unsafe situations

WAIMAKARIRI DISTRICT COUNCIL

CHRISTCHURCH CITY COUNCIL

HURUNUI DISTRICT COUNCIL  
WAIMAKARIRI DISTRICT COUNCIL

