

**WAIMAKARIRI DISTRICT COUNCIL**  
**HISTORIC HERITAGE ITEM RECORD FORM**

---

**2021 District Plan Item No.** HH042  
**HERITAGE ITEM NAME** 'Inglewood', former Threlkeld farmhouse  
**ADDRESS** 98-100 Threlkelds Road, Ohoka

**PHOTOGRAPH**



(WDC)

**DISTRICT PLAN ITEM NO.** H024      **HNZ LIST NO. & CATEGORY** 1770 / 2  
(at time of assessment)

**LEGAL DESCRIPTION** Lot 1 DP 82641

**SDC FILE NUMBER** 2173069800

**DATE OF CONSTRUCTION** c.1867 + later addition(s)

**ARCHITECT/DESIGNER/  
BUILDER** Unknown

**STYLE** Domestic Gothic Revival

**PHYSICAL DESCRIPTION**

Two-storey dwelling with an L-shaped, additive footprint and gabled roof forms. Principal, north-east elevation has cross-gabled bay with faceted bay window terminating a straight veranda beneath gabled dormers. Veranda on south-east elevation terminated by single-storey cross-gabled bay. Lean-to on north- and south-west elevations. Double-hung sash windows, decorative bargeboards, veranda posts and frieze. Brick chimneys, single-storey addition at rear (south-west elevation).

**MATERIALS/STRUCTURE**

Timber framing and weatherboard cladding, brick, corrugated metal roofing.

**ADDITIONS/ALTERATIONS**

Extension to north-east elevation (c.1979). Rear, hip-roofed family room addition (Colin Pilbrow, architect, c.1986). Office addition to east corner (c.1996). Post-EQ repairs (post-2011).

**SETTING**

The farmhouse is located on the south side of Threlkelds Road, south of Main Drain Road and to the east of Ohoka. The house can be glimpsed from the roadway and is associated with a number of outbuildings, including an early 20<sup>th</sup> century stable (H025). The extent of scheduling is the immediate garden setting of the dwelling, rather than the land parcel as a whole, and notwithstanding the potential archaeological values that may be present across the whole site.

## **HISTORY**

Philip Collin Threlkeld (1832-1907) emigrated from England in 1855 and spent six years working as RH Rhodes' overseer at Purau on Banks' Peninsula, before taking up farming on his own account at Flaxton in 1862. Threlkeld married Eliza Cholmondeley (1841-1915), with whom he had eight children, in 1866 and went on to become a successful cattle and sheep breeder. Philip Threlkeld hosted the first meeting of the Flaxton school committee at his home in 1868, chaired the Mandeville and Rangiora Road Board in the late 1860s, and built the Inglewood Flour Mill (Evans' Mill) at Wetheral Railway Station, south of his farm, in 1890. Threlkeld sold a large part of his farm in 1897 and the remainder of the property was subdivided by his son in 1913. The homestead block was sold four years later. The property was owned by William Moir for 20 years (1919-38); it was then leased to Ken Austin, a thoroughbred horse breeder, who purchased 'Inglewood' in 1947. Austin established Inglewood Stud on the farm and hosted Queen Elizabeth the Queen Mother on two occasions during his tenure. The stud was in operation on the site until 1999, after which the property was subdivided to its current extent and then purchased by new owners. The house remains in private residential use and shares the property with a historic stable.

## **HISTORIC AND SOCIAL SIGNIFICANCE**

'Inglewood' has historical significance for its association with PC Threlkeld and his family and, more generally, the farming history of North Canterbury. The house represents the colonial success of an English immigrant through the second half of the 19<sup>th</sup> century and is also notable for its association with Ken Austin and the Inglewood Stud.

## **CULTURAL AND SPIRITUAL SIGNIFICANCE**

'Inglewood' has cultural value as a demonstration of the way of life of its early residents.

## **ARCHITECTURAL AND AESTHETIC SIGNIFICANCE**

'Inglewood' has architectural significance as a Domestic Gothic Revival style building that represents the popularity of the style, particularly for rural farmhouses, in the 1860s and 1870s. The house appears to have been built in two stages, with the earlier central section (veranda and gabled dormers) being extended by the cross-gabled bay at a later date.

## **TECHNOLOGICAL AND CRAFTSMANSHIP SIGNIFICANCE**

'Inglewood' has technological and craftsmanship value for the evidence it provides of 19<sup>th</sup> century construction methods and materials.

## **CONTEXTUAL SIGNIFICANCE**

'Inglewood' has contextual value for the contribution it makes to the historic character of its rural property and in relation to the historic stable on the same site (H025).

## **ARCHAEOLOGICAL AND SCIENTIFIC SIGNIFICANCE**

As the farmhouse pre-dates 1900, its site has potential archaeological significance arising from the early use and development of the property.

## **SUMMARY OF HERITAGE SIGNIFICANCE**

'Inglewood', the former Threlkeld farmhouse, has overall heritage significance to the Ohoka-Flaxton area and Waimakariri district as a whole. The farmhouse has historical significance for its association with PC Threlkeld and his family, as well as its 20<sup>th</sup> century association with the Inglewood Stud. 'Inglewood' has cultural value as a demonstration of the way of life of its early inhabitants and architectural significance as a Domestic Gothic Revival style dwelling. 'Inglewood' has technological and craftsmanship value for the evidence it provides of 19<sup>th</sup>

century construction methods and materials. 'Inglewood' has contextual value for the contribution it makes to its rural setting and its relationship with an early 20<sup>th</sup> century stable building; its site has potential archaeological significance given the property's pre-1900 development and use.

## HERITAGE CATEGORY

B

## REFERENCES

- *Press* 23 November 1866, p. 2; 12 November 1867, p. 2; 30 December 1873, p. 3; 22 January 1874, p. 2; 4 October 1883, p. 7; 4 November 1893, p. 9; 13 March 1913, p. 12; 19 November 1913, p. 6; 19 December 1913, p. 3; 22 September 2012, p. G16; 21 June 2008 & 29 November 2017, available online.
- *Lyttelton Times* 16 April 1862, p. 5; 24 January 1868, p. 3; 23 July 1868, p. 4; 27 June 1885, p. 3; 16 March 1894, p. 3; 11 April 1907, p. 8.
- *Ashburton Guardian* 11 April 1907, p. 2; 31 January 1908, p. 3.
- *Sun* 16 August 1915, p. 1.
- *Oamaru Mail* 8 March 1894, p. 3.
- DN Hawkins *Beyond the Waimakariri* Christchurch, 2001; available online.
- Archives New Zealand; available online.
- <http://www.heritage.org.nz/the-list/details/1770>
- <http://www.heritage.org.nz/the-list/details/1771>
- <http://nzetc.victoria.ac.nz/tm/scholarly/tei-Cyc03Cycl-t1-body1-d4-d8-d13.html>
- <http://nzetc.victoria.ac.nz/tm/scholarly/tei-Cyc03Cycl-t1-body1-d4-d22.html>
- GR Macdonald Dictionary of Canterbury Biographies, Canterbury Museum; available online.
- <https://www.inglewoodstud.co.nz>
- Ohoka Stream Historic Walk; available online.

**REPORT COMPLETED**

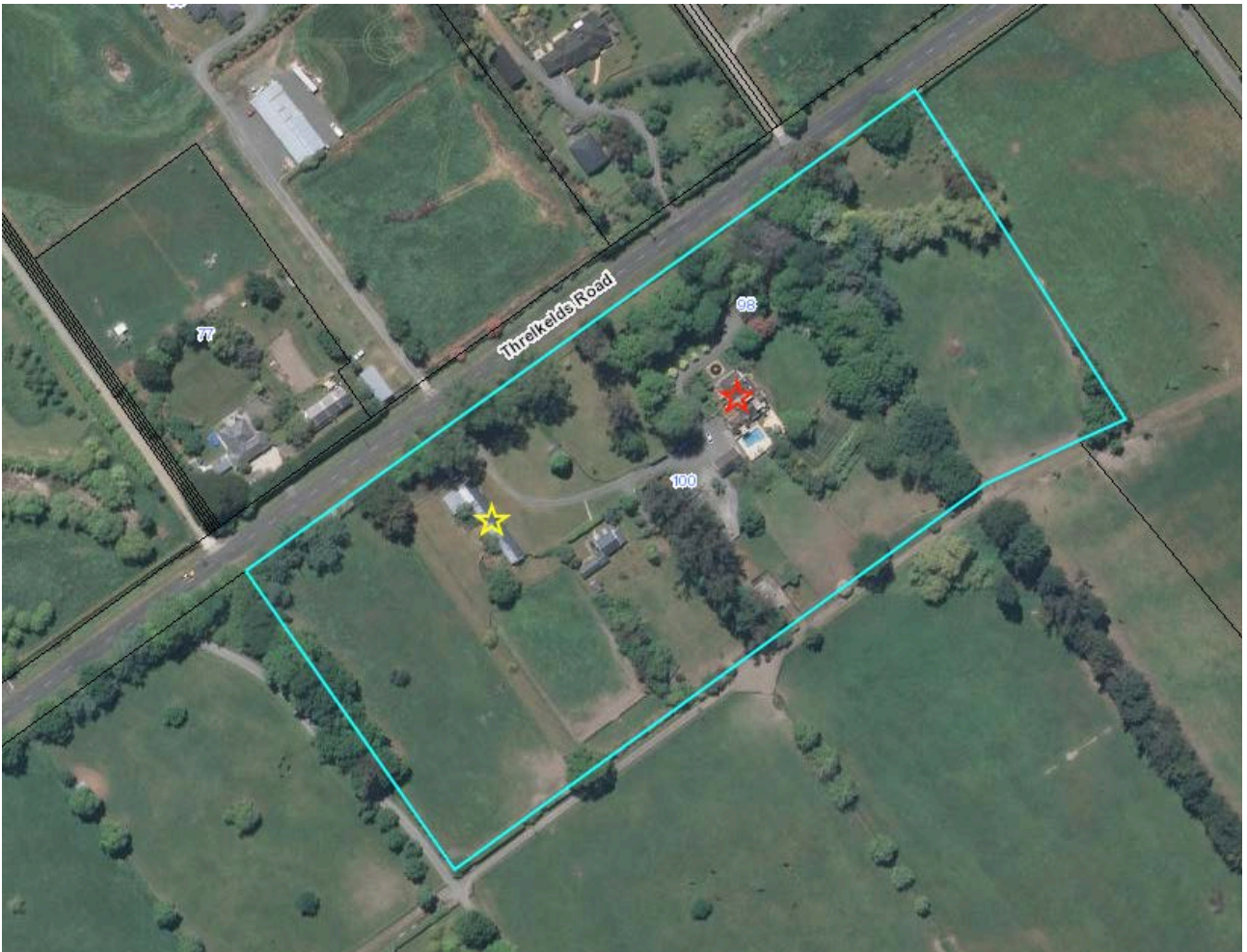
1 April 2019

**AUTHOR**

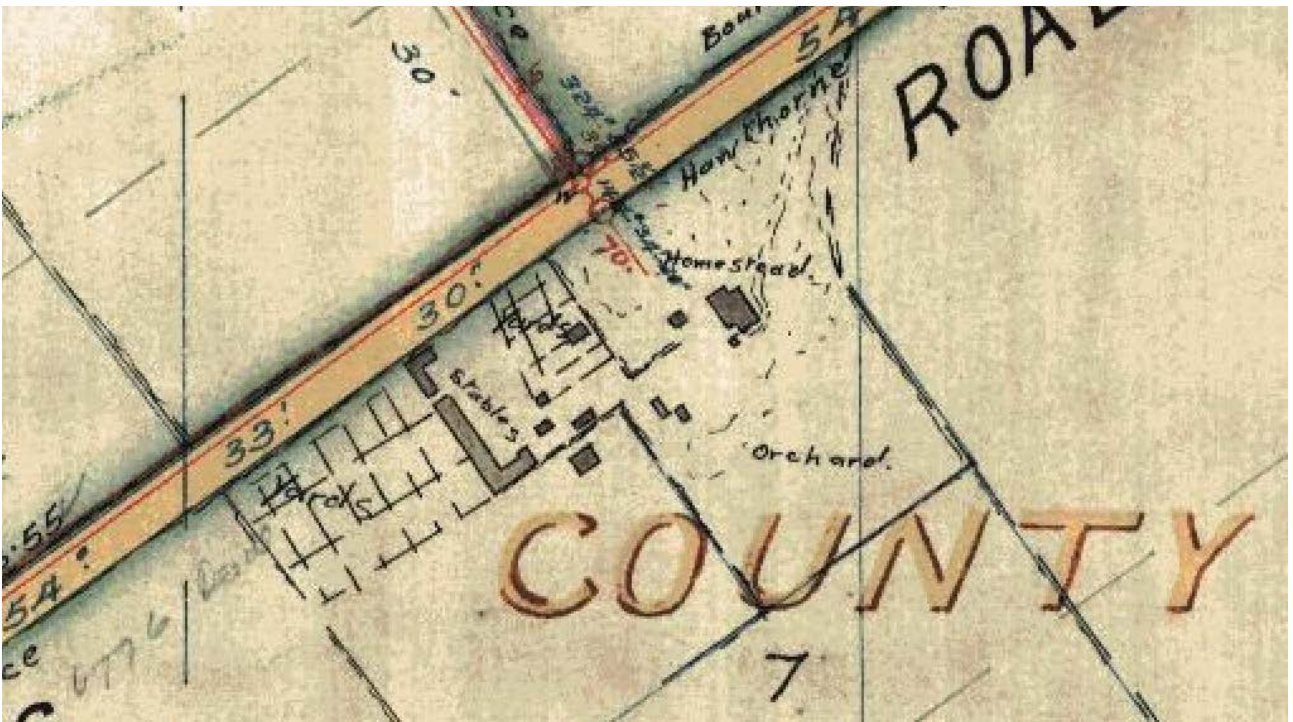
Dr Ann McEwan / Heritage Consultancy Services



Extent of scheduling, limited to immediate garden setting, 'Inglewood', 98-100 Threlkelds Road, Ohoka.



Land parcel as a whole, with farmhouse marked by red star and stable by yellow star.



Detail of DP 3655, prepared for CM Threlkeld and dated 24 February 1913, showing layout of homestead and farm buildings. Quickmap.



As built. WDC.