

Agenda

Rangiora-Ashley Community Board

Wednesday 11 February 2026

7pm

Council Chamber
215 High Street
Rangiora

Members:

Liz McClure (Chairperson)
Jim Gerard QSO (Deputy Chairperson)
Kirstyn Barnett
Robbie Brine
Wendy Doody
Alan Geeves
Jason Goldsworthy
Diana Hawkins
Duncan Lundy
Bruce McLaren
Brent Robinson
Joan Ward



WAIMAKARIRI
DISTRICT COUNCIL

AGENDA CONTENTS – RANGIORA-ASHLEY COMMUNITY BOARD MEETING

<u>Item Number</u>	<u>Item Topic</u>	<u>Page numbers</u>
3	Confirmation of Minutes	
3.1	Minutes of 10 December 2025	9-18
3.3	Workshop Notes of 10 December 2025	19-21
6	Staff Reports	
6.1	Request to Approve the Extension of No-Stopping Restrictions on Southbrook Road	22-26
6.2	Request to Approve the Golding Avenue No-Stopping Restrictions	27-36
6.3	Installation of Sculpture at MainPower Stadium	37-47
6.4	Request for Inclusion of New Names to the Pre-Approved Rangiora-Ashley Community Board's Road and Reserve Names List	48-62
7	Correspondence	
7.1	Options for Managing Cats in Waimakariri	63-65
.2	Phoenix Palm Tree at 2 Edward Street	66-67
8	Chairpersons Report	68
10	Members Information Exchange	
10.1	Diana Hawkins	69
10.2	Bruce McLaren	70

**AGENDA FOR THE MEETING OF THE RANGIORA-ASHLEY COMMUNITY BOARD TO BE HELD
IN THE COUNCIL CHAMBER, 215 HIGH STREET, RANGIORA ON WEDNESDAY 11 FEBRUARY
2026 AT 7PM.**

**RECOMMENDATIONS IN REPORTS ARE NOT TO BE CONSTRUED AS
COUNCIL POLICY UNTIL ADOPTED BY THE COUNCIL/COMMUNITY BOARD**

BUSINESS

PAGES

1. APOLOGIES

2. CONFLICTS OF INTEREST

3. CONFIRMATION OF MINUTES

3.1. Minutes of the Rangiora-Ashley Community Board – 10 December 2025

9-18

RECOMMENDATION

THAT the Rangiora-Ashley Community Board:

- (a) **Confirms**, as a true and accurate record, the circulated Minutes of the Rangiora-Ashley Community Board meeting, held on 10 December 2025.

3.2. Matters Arising (From Minutes)

3.3. Notes of the Rangiora-Ashley Community Board – 10 December 2025

19-21

RECOMMENDATION

THAT the Rangiora-Ashley Community Board:

- (a) **Receives**, the circulated notes of the Rangiora-Ashley Community Board meeting, held on 10 December 2025.

4. DEPUTATIONS AND PRESENTATIONS

Nil.

5. ADJOURNED BUSINESS

Nil.

6. REPORTS

6.1. Request to Approve the Extension of No-Stopping Restrictions on Southbrook Road –Nithin Puthupparambil (Transportation Engineer) and Shane Binder (Senior Transportation Engineer)

22-26

RECOMMENDATION

THAT the Rangiora-Ashley Community Board:

(a) **Receives** Report No. 260116006869.

AND

THAT the Rangiora-Ashley Community Board recommends:

THAT the Utilities and Roding Committee:

(b) **Approves** installation of the following no-stopping restrictions:

- Southbrook Road, on the east side of the road, for a length of 18.5m south of the existing restriction, starting at the northern end of driveway to 66A, 66B, and 66 Southbrook Road and ending at northern end of driveway to 66A Southbrook Road.
- Southbrook Road, on the west side of the road, for a length of 6m to the south of the existing restriction, starting at the southern end of 55 A, and 55 Southbrook Road and ending at 13m from the northern end of driveway to 53D Southbrook Road.

(c) **Notes** that this extension of existing no-stopping restrictions will not result in on-street parking loss, as the areas are not designed for parking and are too narrow to safely accommodate parking.

6.2. Request to Approve the Golding Avenue No-Stopping Restrictions – Shane Binder (Senior Transportation Engineer) and Joanne McBride (Roding and Transportation Manager)

27-36

RECOMMENDATION

THAT the Rangiora-Ashley Community Board:

(a) **Receives** Report No. 260109002898.

AND

THAT the Rangiora-Ashley Community Board recommends:

THAT the Utilities and Roding Committee:

(b) **Approves** installation of the following no-stopping restrictions:

- Eastern side of Golding Avenue, for a length of 11m north of the driveway to no. 22 Golding Avenue.
- Western side of Golding Avenue, from a point 10m south of the driveway to no's 19-31 Golding Avenue, for a length of 11m south.

(c) **Notes** that properties adjoining the proposed no-stopping restrictions were sent consultation letters in July 2025, but no feedback was received.

6.3. **Installation of Sculpture at MainPower Stadium – Mel Foster (Community Development Facilitator – Arts Strategy Implementation) and Grant MacLeod (Greenspace Manager)**

37-47

RECOMMENDATION

THAT the Rangiora-Ashley Community Board:

- (a) **Receives** Report No. 260122010759.
- (b) **Approves** installation of the sculpture, created by Sharon Earl, at MainPower Stadium.
- (c) **Approves** up to \$2,000 of discretionary funding from the Rangiora Ashley Community Board's General Landscaping Budget to cover unforeseen installation costs.
- (d) **Notes** that the proposed location of the sculpture in MainPower Stadium has been agreed between the Waimakariri Public Arts Trust, the Council and the North Canterbury Sport and Recreation Trust.
- (e) **Notes** that the sculpture will be owned and maintained by Council with ongoing maintenance costs being covered by existing Greenspace Maintenance Budgets (10.538.811.2507).

6.4. **Request for Inclusion of New Names to the Pre-Approved Rangiora-Ashley Community Board's Road and Reserve Names List – Thea Kunkel (Governance Team Leader)**

48-62

RECOMMENDATION

THAT the Rangiora-Ashley Community Board:

- (a) **Receives** Report No. 260126012243.
 - (b) **Approves** including the name Dalkeith in the Pre-Approved Rangiora-Ashley Community Board's Road and Reserve Names List.
- OR**
- (c) **Declines** the inclusion of the name Dalkeith in the Pre-Approved Rangiora-Ashley Community Board's Road and Reserve Names List.
 - (d) **Approves** including the name Purvis in the Pre-Approved Rangiora-Ashley Community Board's Road and Reserve Names List.
- OR**
- (e) **Declines** the inclusion of the name Purvis in the Pre-Approved Rangiora-Ashley Community Board's Road and Reserve Names List.

7. **CORRESPONDENCE**

7.1. **Options for Managing Cats in Waimakariri**

63-65

7.2. **Phoenix Palm Tree at 2 Edward Street**

66-67

RECOMMENDATION

THAT the Rangiora-Ashley Community Board:

- (a) **Receives** the memo regarding Options for Managing Cats in the Waimakariri (Trim: 260105000830).
- (b) **Receives** the memo regarding Phoenix Palm Tree at 2 Edward Street (Trim: 251222244272).

8. **CHAIRPERSON'S REPORT**

8.1. **Chair's Diary for December 2025 and January 2026**

68

RECOMMENDATION

THAT the Rangiora-Ashley Community Board:

- (a) **Receives** the report from the Rangiora-Ashley Community Board Chairperson (Trim: 260204019528).

9. **MATTERS FOR INFORMATION**

- 9.1. **Oxford-Ohoka Community Board Meeting Minutes 3 December 2025.**
- 9.2. **Woodend-Sefton Community Board Meeting Minutes 8 December 2025.**
- 9.3. **Kaipoi-Tuahiwi Community Board Meeting Minutes 8 December 2025.**
- 9.4. **Council Submissions to Central Government Consultations for September and October 2025 – Report to Council Meeting 2 December 2025 – Circulates to all Boards.**
- 9.5. **Adoption of Community Board Submissions on Resource Management Matters Policy – Report to Council Meeting 2 December 2025 – Circulates to all Boards.**
- 9.6. **Adoption of Elected Members Expenses Policy – Report to Council Meeting 2 December 2025 – Circulates to all Boards**
- 9.7. **Elected Member Pecuniary Interests Register – Report to Council Meeting 2 December 2025 – Circulates to all Boards**
- 9.8. **Oxford-Ohoka Community Board Chairpersons Report for Period 1 January 2025 to 30 September 2025 – Report to Council Meeting 2 December 2025 – Circulates to all Boards**
- 9.9. **Kaipoi-Tuahiwi Community Board Chairpersons Report for Period 1 January 2025 to 30 September 2025 – Report to Council Meeting 2 December 2025 – Circulates to all Boards**
- 9.10. **Rangiora-Ashley Community Board Chairpersons Report for Period 1 January 2025 to 30 September 2025 – Report to Council Meeting 2 December 2025 – Circulates to all Boards**
- 9.11. **Woodend-Sefton Community Board Chairpersons Report for Period 1 January 2025 to 30 September 2025 – Report to Council Meeting 2 December 2025 – Circulates to all Boards**
- 9.12. **Health, Safety and Wellbeing Report October 2025 to Current – Report to Council Meeting 2 December 2025 – Circulates to all Boards**
- 9.13. **Rural Recycling Facility Options – Report to Utilities and Roding Committee Meeting 9 December 2025 – Circulates to the Rangiora-Ashley and Woodend-Sefton Community Boards**
- 9.14. **May 2025 Flood Recovery Progress Update and Project Update on Infrastructure Resilience Fund for 2024/25 and 2025/26 – Report to Utilities and Roding Committee Meeting 9 December 2025 – Circulates to all Boards**
- 9.15. **Update to Northern Pegasus Bay Advisory Group Terms of Reference – Report to Community and Recreation Committee Meeting 16 December 2025 – Circulates to all Boards**
- 9.16. **Arohatia te Awa Terms of Reference – Report to Community and Recreation Committee Meeting 16 December 2025 – Circulates to all Boards**
- 9.17. **Aquatics December Update – Report to Community and Recreation Committee Meeting 16 December 2025 – Circulates to all Boards**
- 9.18. **Libraries Update to December 2025 – Report to Community and Recreation Committee Meeting 16 December 2025 – Circulates to all Boards**

PUBLIC EXCLUDED

9.19. Partial Acquisition of Todds Road and Fernside Road, Rangiora – Report to Council Meeting 2 December 2025 – Circulates to the Rangiora-Ashley Community Board

RECOMMENDATION

THAT the Rangiora-Ashley Community Board:

- (a) **Receives** the information in Items.9.1 to 9.18.
- (b) **Receives** the separately circulated public excluded information in Item 9.19.

Note:

- 1. *The links for Matters for Information were previously circulated to members as part of the relevant meeting agendas.*
- 2. *Hard copies of the public excluded items were circulated to members separately.*

10. MEMBERS' INFORMATION EXCHANGE

The purpose of this exchange is to provide a short update to other members in relation to activities/meetings that have been attended or to provide general Board related information.

Any written information submitted by members is included in the agenda.

11. CONSULTATION PROJECTS

11.1. Beach Users Survey 2025/26

<https://letstalk.waimakariri.govt.nz/beach-users-survey-2025>

11.2. Libraries Survey 2025

<https://letstalk.waimakariri.govt.nz/libraries-survey-2025>

12. BOARD FUNDING UPDATE

12.1. Board Discretionary Grant

Balance as at 31 January 2026: \$9,747.

12.2. General Landscaping Fund

Balance as at 31 January 2026: \$29,290.

13. MEDIA ITEMS

14. QUESTIONS UNDER STANDING ORDERS

15. URGENT GENERAL BUSINESS UNDER STANDING ORDERS

NEXT MEETING

The next meeting of the Rangiora-Ashley Community Board is scheduled for 7pm, Wednesday 11 March 2026 in the Council Chamber.

Workshop

- *Blake Street Carpark Reconfiguration Project – Heike Downie (Strategy and Centres Team Leader) 30mins*
- *BNZ Corner Development – Heike Downie (Strategy and Centres Team Leader) 30mins*
- *Members Forum*
 - *Rangiora-Ashley Community Board Plan*

MINUTES OF THE MEETING OF THE RANGIORA-ASHLEY COMMUNITY BOARD HELD IN THE COUNCIL CHAMBERS, RANGIORA SERVICE CENTRE, 215 HIGH STREET, RANGIORA, ON 10 DECEMBER 2025 AT 7PM.

PRESENT

J Gerard (Chairperson), R Brine, A Geeves, J Goldsworthy, D Hawkins, D Lundy, B McLaren, B Robinson and J Ward.

IN ATTENDANCE

S Hart (General Manager Strategy, Engagement and Economic Development), J McBride (Roading and Transport Manager), D Young (Senior Engineering Advisor), G Stephens (Design and Planning Team Leader), K Straw (Civil Projects Team Leader), T Stableford (Landscape Architect), J Mason (Landscape Architect), A Huang (Landscape Planner), M Eaton (Community Development Facilitator – Arts Strategy), Caitlin Roberts (Graduate Engineer), T Kunkel (Governance Team Leader) and A Connor (Governance Support Officer).

One member of the public was present.

1. APOLOGIES

Moved: R Brine

Seconded: J Ward

THAT the Rangiora-Ashley Community Board:

- (a) **Receives** and **sustains** apologies for leave of absence from K Barnett, W Doody, and L McClure.

CARRIED

2. CONFLICTS OF INTEREST

Item 6.1 B Robinson declared a conflict of interest due to personal reasons.

3. CONFIRMATION OF MINUTES

3.1. Minutes of the Rangiora-Ashley Community Board – 12 November 2025

Moved: B McLaren

Seconded: D Hawkins

THAT the Rangiora-Ashley Community Board:

- (a) **Confirms**, as a true and accurate record, the circulated Minutes of the Rangiora-Ashley Community Board meeting, held on 12 November 2025.

CARRIED

3.2. Matters Arising (From Minutes)

There were no matters arising from the Minutes.

4. DEPUTATIONS AND PRESENTATIONS

Nil.

5. ADJOURNED BUSINESS

Nil.

Report 6.2 “Approval for Implementation of the Canterbury Street Reserve Master Plan” was taken at this time. However, the agenda order was retained in the Minutes to mitigate confusion.

6. **REPORTS**

6.1. **Approval to Install No Stopping Restrictions – Grey View Grove** – J McBride (Roading and Transport Manager)

J McBride took the report as read and noted that multiple service requests and complaints had been received regarding parked vehicles along Grey View Grove, which restricted manoeuvring space for two-way traffic. Given the area's heavy use and all-day parking, staff reviewed several options and recommended installing no-stopping restrictions on the north side of the road.

D Hawkins inquired about the number of complaints received and the timeframe involved. J McBride advised that the matter had been ongoing for approximately 18 months and involved the developer, residents, and surrounding businesses. Numerous complaints were lodged during this period, with several channelled through the developer.

Following a question from B McLaren, J McBride confirmed that staff visited the residents at No. 1 Grey View Grove and that they supported the proposed no-stopping restriction.

Moved: B McLaren

Seconded: D Hawkins

THAT the Rangiora-Ashley Community Board:

(a) **Receives** Report No. 251103208879.

AND

THAT the Rangiora-Ashley Community Board recommends:

THAT the Utilities and Roading Committee:

(b) **Approves** installation of the following no-stopping restriction:

i. Grey View Grove on the north side of the road from the intersection with East Belt east to the access to Nos. 3 and 9. This is 75 metres long.

(c) **Notes** that the installation of a no-stopping restriction at this location equates to the loss of 11 on-street parking spaces.

CARRIED

D Hawkins supported the motion as she felt this was a sensible solution with all affected parties in favour.

6.2. **Approval for Implementation of the Canterbury Street Reserve Master Plan** – T Stableford (Landscape Architect)

T Stableford advised that, in September 2025, the Board approved the Concept Plan for the Canterbury Street Reserve play space for public consultation. The plan was shared with Ashley Village residents through a Let's Talk flyer delivered to homes and published on the Council's Facebook page and website. Although formal feedback was not received from the Ashley Playcentre, staff undertook extensive consultation with parents to understand their aspirations for the reserve. Following further community consultation, the pathway was relocated to the opposite side of the reserve to provide more grass space and play equipment, including a mini flying fox, which was also requested in the consultation.

D Hawkins asked for the reason behind the removal of two trees. T Stableford explained that the proposal was to remove the trees to create more open grass space, as requested by the community during the consultation process.

In response to a further question from D Hawkins, T Stableford advised that no lighting was proposed for the reserve, noting that the Canterbury Street Reserve was a small space and the Council would not typically install lighting in reserves of that size. G Stephens added that installing lighting in such areas could encourage night-time use of the reserve, which was not desired due to safety concerns. He further observed that while individuals may be visible within a lit play space, the surrounding darkness would remain obscured.

Moved: J Ward

Seconded: A Geeves

THAT the Rangiora-Ashley Community Board:

- (a) **Receives** Report No. 251125224093.
- (b) **Approves** the Canterbury Street Reserve Master Plan (Trim: 251127226334).
- (c) **Notes** that \$200,000 has been allocated to this project for expenditure in the 2025/26 financial year, funded from the Play Safety Surface/Equipment budget (PJ 102591.000.5224).
- (d) **Notes** that an additional \$2,250 is available from the Urban Wild budget, under the Natural Environment Strategy (PJ 102466.280.2543), to support the naturalisation of the proposed swale in the Master Plan. This brings the total combined project budget to \$202,250.
- (e) **Notes** that feedback received through consultation has resulted in changes to the Concept Plan to form the Master Plan. The changes include relocating the pathway and play equipment to provide more space and therefore greater play opportunities for all ages. A swale system has also been incorporated into the design to further accommodate the reserve's wet conditions.

CARRIED

J Ward supported the motion and thanked the staff for their work on the development of the Canterbury Street Reserve Master Plan.

B McLaren noted that he visited the Canterbury Street Reserve during the public consultation period and acknowledged the staff's great work. He also supported the motion.

D Lundy thanked the staff for their detailed report, noting that the area warranted these works, as Ashley was a vibrant community.

6.3. **Issuing of Project Brief for Kippenberger Sculpture – General Landscaping Project**
– A Huang (Landscape Planner) and M Foster (Community Development Facilitator – Arts Strategy Implementation)

A Huang took the report as read, noting that in June 2025, the Board allocated \$30,000 from its General Landscaping Budget to cover all aspects of the installation of a sculpture celebrating Sir Howard Kippenberger at the Kippenberger Avenue entrance to Rangiora. The purpose of the report was to seek approval from the Board to issue the Project Brief for seeking artistic expressions of interest for a sculpture.

There were no questions from elected members.

Moved: J Ward

Seconded: B McLaren

THAT the Rangiora-Ashley Community Board:

- (a) **Receives** Report No. 251125224641.

- (b) **Approves** staff issuing the Project Brief (TRIM 251113216804), inviting artistic expressions of interest for a sculpture to be placed on Kippenberger Avenue.
- (c) **Notes** that the previously approved allocation of \$30,000 from the Rangiora–Ashley General Landscaping Budget will cover the full costs associated with this project, including conceptual design, detailed design, artwork fabrication, and installation.
- (d) **Notes** that the Waimakariri Public Arts Trust (WPAT) will shortlist three concepts that best meet the project objectives. The three shortlisted concepts will be brought back to the Board in a subsequent report, at which point the Board will select and endorse its preferred concept. The endorsed concept will then proceed to full art concept development, fabrication and installation.
- (e) **Notes** that due to the timeframes associated with the process to select the successful artist, this project may extend beyond the current financial year, and that the budget for uncompleted work will be carried forward into the 2026/27 financial year as a work in progress.

CARRIED

J Ward supported the motion as she believed that the proposed location was ideal for an art installation paying homage to Sir Howard Kippenberger. She therefore supported the motion.

B McLaren concurred with the comments from J Wards and thanked the staff for progressing the project.

D Lundy highlighted the rapid growth and change in Rangiora and felt it was appropriate to reflect on and educate the public about the area's history.

6.4. **Elm Green Reserve Draft Concept Plan for Consultation** – J Mason (Landscape Architect)

J Mason advised that approval was being sought to undertake community consultation with residents within approximately a 500-metre radius of Elm Green Reserve, Rangiora, regarding the proposed draft Concept Plan. The development of a play space in the reserve was identified as necessary to meet the needs of residents in East Rangiora, south of Kippenberger Avenue. The draft plan outlined the intended design and function of the space, incorporating both natural and traditional play features to cater for a range of ages and abilities. Community feedback would be sought on any additional elements desired. Following consultation, staff would amend the plan as required and present a revised version to the Board for final approval in early 2026.

In response to a question from D Hawkins, J Mason confirmed that the eastern side of the Elm Green Reserve would be available for open grass play. She also noted that a small stormwater swale is proposed in the southern part of the reserve, to be completed in December 2025, to mitigate flooding. The swale would be landscaped to add interest and soften its overall form.

Moved: D Hawkins

Seconded: B McLaren

THAT the Rangiora-Ashley Community Board:

- (a) **Receives** Report No. 251104209006.
- (b) **Approves** Greenspace Staff undertaking community engagement on the Elm Green Reserve Draft Concept Plan (Trim: 250901162893).
- (c) **Notes** that there is budget of \$400,000 within the 2025/26 Land Development - Neighbourhood budget for Kippenberger / Elm Green Linkage Playground Development (PJ 102758.000.5225).

- (d) **Notes** Staff estimate the costs to implement the proposed Draft Concept Plan to be approximately \$380,000 to implement the play space, which includes a 15% project contingency.
- (e) **Notes** that once consultation has been completed, staff will collate the feedback and make any necessary changes before bringing the revised plan back to the Board for final approval to implement. It is anticipated that this would enable construction in Spring 2026.

CARRIED

D Hawkins noted that the draft concept plan for the Elm Green Reserve was well thought out and would provide a much-needed play space in eastern Rangiora. She supported the motion as she believed that children should be encouraged to play.

B McLaren also supported the motion, highlighting that eastern Rangiora was a growing area and that creating a play space in the Elm Green Reserve would meet the needs of residents in the Highgate and Elm Green subdivisions.

J Ward supported the comments made by D Hawkins and B McLaren.

6.5. **Applications to the Rangiora-Ashley Community Board's 2025/26 Discretionary Grant Fund** – T Kunkel (Governance Team Leader)

T Kunkel advised that the McCullough Guards Leisure Marching Team was seeking funding to cover the cost of hiring MainPower Stadium to host the National Leisure Marching Competition in March 2026. Although the 2026 National Leisure Marching Competition was to be held in Rangiora, the team was based in Christchurch. The application did not specify the number of residents in the Rangiora-Ashley Ward who would benefit from it.

It was indicated that hiring MainPower Stadium would cost approximately \$15,000, with the overall event estimated at roughly \$36,000. However, the financial information provided by the team did not demonstrate the team's ability to deliver the project. Although a high-level budget and a bank statement were provided, no Balance Sheet or Profit and Loss Statement was provided.

D Hawkins sought clarification on whether the North Canterbury Classics Leisure Marchers applied to the Board for coverage of its registration fees for the same event. T Kunkel confirmed they had applied. However, the application was declined because it was the third consecutive year they had applied for the same activity, and the Board did not wish to fund ongoing or annual operating expenditure.

A Geeves asked if there was a pathway to have the hiring fees of MainPower Stadium subsidised. S Hart noted that community groups and organisations could apply to the Council's Facilities and Consents Fee Waiver Subcommittee, which had delegated authority to approve fee waivers for hiring Council facilities.

Moved: J Gerard

Seconded: D Lundy

THAT the Rangiora-Ashley Community Board:

- (a) **Receives** Report No. 251124223197.
- (b) **Declines** a grant to the McCullough Guards Leisure Marching Team.

CARRIED

J Gerard did not support the application because the McCullough Guards Leisure Marching Team was based in Christchurch, and their application, therefore, did not meet the Board's Discretionary Grant Funding Criteria.

D Lundy concurred, noting that there were still six months left in the 2025/26 financial year and that the Board had to ensure sufficient funds to cover any other groups and organisations from within the Rangiora-Ashley Ward wishing to apply.

The meeting adjourned at 7.27pm for a workshop to discuss the appointments to Advisory Groups and External Organisations and reconvened at 7.38pm.

6.6. **Appointments to Advisory Groups and External Organisations – T Kunkel (Governance Team Leader)**

T Kunkel took the report as read, and there were no questions from elected members.

Moved: J Gerard

Seconded: J Ward

THAT the Rangiora-Ashley Community Board:

- (a) **Receives** report No. 250923180475.
- (b) **Approves** the appointment of Board Member L McClure as the Board representative and liaison person to the Waimakariri Health Advisory Group until October 2028.
- (c) **Approves** the appointment of Board Member B Robinson as the Board representative and liaison person to GreyPower North Canterbury until October 2028.
- (d) **Approves** the appointment of Board Member A Geeves as the Board representative and liaison person to the Waimakariri Access Group until October 2028.
- (e) **Approves** the appointment of Board Member J Gerard as the Board representative and liaison person to the Rangiora and Districts Early Records Society until October 2028.
- (f) **Approves** the appointment of Board Member D Lundy as the Board representative and liaison person to the Cust and District Historical Records Society Inc until October 2028.
- (g) **Approves** the appointment of Board Member A Geeves as a Board representative and liaison person to the Rangiora Landmarks Team until October 2028.
- (h) **Approves** the appointment of Board Member B Robinson as the Board representative and liaison person to Keep Rangiora Beautiful until October 2028.
- (i) **Approves** the appointment of Board Member J Goldsworthy as the Board representative and liaison person to the Rangiora Promotions Management Board until October 2028.
- (j) **Approves** the appointment of Board Member J Gerard as the Board representative and liaison person to the Southbrook Road Reference Group and the Southbrook Road Improvements Working Group until October 2028.
- (k) **Approves** the appointment of Board Member D Lundy as the Board representative and liaison person to the Fernside Hall Advisory Group until October 2028.
- (l) **Approves** the appointment of Board Member K Barnett as the Board representative and liaison person to the Cust Community Centre Advisory Group until October 2028.
- (m) **Approves** the appointment of Board Member R Brine as the Board representative and liaison person to the Southbrook Sports Club and the Southern Community Hub Development Project Working Group until October 2028.

- (n) **Approves** the appointment of Board Member K Barnett as the Board representative and liaison person to the Cust Domain Advisory Group until October 2028.
- (o) **Approves** the appointment of Board Member D Hawkins as the Board representative and liaison person to the Loburn Domain Advisory Group until October 2028.
- (p) **Approves** the appointment of Board Member D Hawkins as the Board representative to the Ashley River Care Group until October 2028.
- (q) **Approves** the appointment of Board Member D Lundy as the Board representative and liaison person to the Central Rural Drainage Advisory Group until October 2028.
- (r) **Approves** the appointment of Board Member D Hawkins as the Board representative and liaison person to the Water Races Advisory Group until October 2028.
- (s) **Approves** the appointment of Board Member D Hawkins as the Board representative to the Hurunui District Council – Ashley Rural Water Scheme Management Committee until October 2028.

CARRIED

7. CORRESPONDENCE

Nil.

8. CHAIRPERSON'S REPORT

8.1. Chair's Diary for November 2025

Moved: J Gerard

Seconded: J Ward

THAT the Rangiora-Ashley Community Board:

- (a) **Receives** the report from the Rangiora-Ashley Community Board Chairperson (Trim: 251203229912).

CARRIED

9. MATTERS FOR INFORMATION

- 9.1. Oxford-Ohoka Community Board Meeting Minutes 5 November 2025.
- 9.2. Woodend-Sefton Community Board Meeting Minutes 10 November 2025.
- 9.3. Kaipoi-Tuahiwi Community Board Meeting Minutes 17 November 2025.
- 9.4. Approval of Subdivision Contribution Programme for 2025/26 – Report to Council Meeting 4 November 2025 – Circulates to all Boards
- 9.5. Health, Safety and Wellbeing Report September 2025 to Current – Report to Council Meeting 4 November 2025 – Circulates to all Boards.
- 9.6. Annual Report and Audited Accounts for Enterprise North Canterbury for the Year Ended 30 June 2025, and Promotion of Waimakariri District Business Plan Report to June 2025 – Report to the Audit and Risk Committee Meeting 18 November 2025 – Circulates to all Boards
- 9.7. Annual Report for Te Kōhaka o Tūhaitara Trust for the Year Ended 30 June 2025 – Report to Report to the Audit and Risk Committee Meeting 18 November 2025 – Circulates to all Boards
- 9.8. Eastern District Sewer Scheme and Oxford Sewer Scheme Annual Compliance Reports 2024/25 – Report to Utilities and Roading Committee Meeting 25 November 2025 – Circulates to all Boards

- 9.9. Drinking Water Quality and Compliance Annual Report 2024-2025 – Report to Utilities and Rooding Committee Meeting 25 November 2025 – Circulates to all Boards
- 9.10. Herbicide Update and Usage by Council and Contractors in 2024/2025 – Report to Utilities and Rooding Committee Meeting 25 November 2025 – Circulates to all Boards

Moved: R Brine

Seconded: D Lundy

THAT the Rangiora-Ashley Community Board:

- (a) **Receives** the information in Items 9.1 to 9.10.

CARRIED

10. MEMBERS' INFORMATION EXCHANGE

R Brine:

- Southern Community Hub Development Project Working Group - The current facility was built mainly by volunteers of the Southbrook Rugby Club and the Southbrook Cricket Club. The facilities were no longer fit for purpose. Therefore, in the Council's 2024/34 Long Term Plan, it allocated \$1.3 million for the redevelopment of the Club's facilities, on the condition that the Club raise the remaining required funding. The club was therefore currently seeking partners who may also want to be located at the facility.

A Geeves:

- The corner of King and Charles Streets in Rangiora had a high number of ambulance-required crashes. Most were the result of drivers failing to yield.

J McBride advised that the Council was aware of a high number of incidents at the intersection and that improvements would be proposed as part of the next Rooding Minor Safety Programme.

D Lundy:

- Attended Civil Defence exercise in Rangiora, which had been well organised by Council staff

J Ward:

- The Council was working on the 2026/27 Annual Plan as well as the 2028/38 Long Term Plan.
- The Southern Community Hub Working Group was essential for the health and well-being of the Waimakariri District. The Working Group would hold a public workshop in February 2026 on the proposed redevelopment. The community needed to be motivated to raise enough funds for the project to proceed.

J Gerard:

- Attended the Rangiora Santa Parade.
- The proposed quarrying activities and the construction and operation of a Class 3 Managed Fill Landfill at 150, 154, 174 and 176 Quarry Road, Loburn would not proceed under the Fast-track Approvals Act, 2024, which would allow the community's submissions to be heard.

J Goldsworthy:

- Attended the Young Elected Members Hui, which highlighted challenging viewpoints to also focus on social values, not just economics.
- It was proposed to revoke the Parking and Traffic Bylaw and replace it with a modernised version.
- The Council held a workshop on the possibility of an independent member/chair of the Audit and Risk Committee.

B Robinson:

- Attended the Salvation Army driver's license passing graduation evening.

B McLaren:

- North Canterbury Neighbourhood Support were currently transitioning to a trust, and at the time of completion, they may seek Board representation.
- Attended the Noaia Market.

D Hawkins:

- Had received feedback from a member of the community regarding the lifting of the fire ban despite the current dry weather.

J Goldsworthy noted that Fire and Emergency New Zealand (FENZ) had the delegation to determine fire rules.

11. CONSULTATION PROJECTS

Nil.

12. BOARD FUNDING UPDATE**12.1. Board Discretionary Grant**

Balance as at 30 November 2025: \$9,747.

12.2. General Landscaping Fund

Balance as at 30 November 2025: \$29,290.

The Board noted that Funding Updates

13. MEDIA ITEMS

Nil.

14. QUESTIONS UNDER STANDING ORDERS

Nil.

15. URGENT GENERAL BUSINESS UNDER STANDING ORDERS

Nil.

16. NEXT MEETING

The next meeting of the Rangiora-Ashley Community Board was scheduled for 7pm, Wednesday 11 February 2025 in the Council Chamber.

THERE BEING NO FURTHER BUSINESS, THE MEETING WAS CLOSED AT 8PM.

CONFIRMED

Chairperson

Date**Workshop****Trim: 251217241086**

- *Proposed Changes to Ashley Street and Ivory Street Line Marking*
- *Significant Upcoming Projects in Rangiora*
- *Landscaping Budget*
- *Members Forum*

NOTES OF THE WORKSHOP OF THE RANGIORA-ASHLEY COMMUNITY BOARD HELD IN THE COUNCIL CHAMBER, 215 HIGH STREET, RANGIORA, ON WEDNESDAY, 10 DECEMBER 2025, AT 8PM.

PRESENT

J Gerard (Chairperson), R Brine, A Geeves, J Goldsworthy, D Hawkins, D Lundy, B McLaren, B Robinson and J Ward.

IN ATTENDANCE

S Hart (General Manager Strategy, Engagement and Economic Development), J McBride (Roading and Transport Manager), A Huang (Landscape Planner), G Stephens (Design and Planning Team Leader), D Young (Senior Engineering Advisor), Caitlin Roberts (Graduate Engineer), K Straw (Civil Projects Team Leader), T Kunkel (Governance Team Leader) and A Connor (Governance Support Officer).

1. APOLOGIES

Moved: R Brine

Seconded: J Ward

THAT the Council:

- (a) **Receives** and **sustains** apologies for leave of absence from W Doody, K Barnett, and L McClure.

CARRIED

1. Proposed Changes to Ashley Street and Ivory Street Line Marking – K Straw (Civil Projects Team Leader) and J McBride (Roading and Transport Manager)

Presentation: Trim: 251209234416

Key Points:

- Ashley Street was included in the Reseal Programme for the 2026/27 financial year. This provided an opportunity to review the existing line markings and address any deficiencies.
- Ashley Street had cycle lanes for most of its length, with sections missing between Duke Street and Kingsbury Avenue and between Coldstream Road and River Road. The Duke Street to Kingsbury Avenue was within the proposed resurfacing area.
- Ashley Street was included in the Walking and Cycling Network Plan.
- The Hurunui Heartland Ride promoted Ashley Street as a cycle route in and out of Rangiora to the North.
- The previously approved plan would see car parking removed outside 87 and 89 Ashley Street. The revised plan would remove the parking outside the cemetery but would retain the parking outside 87 and 89 Ashley Street. Staff considered that removing three parking spaces outside 87 and 89 Ashley Street would have a greater adverse impact than removing five on the eastern side of the road.
- Initial consultation feedback:
 - No. 88 Ashley Street – rarely utilised the on-street parking and were happy with the proposed two parks retained.
 - Anglican Cemetery:
 - Was rarely used for interments.
 - Maintenance access was a priority and would not be impacted by the proposal.

- Main concern was visitors to the cemetery, many of whom were elderly or had mobility issues, making parking over the road not as desirable.
- They requested that the Council provide two additional parking spaces to accommodate visitors to the cemetery. The Council would not support angled parking on Ashley Street.

Questions/Issues/Feedback:

- *Would a cycle lane impact the heavy traffic utilising Ashley Street?*
The proposal would be consistent with the remainder of Ashley Street and would just close the current gaps.
- *Had it been considered to have cycle lanes on a different street?*
King Street had been considered; however, it was anticipated that cyclists would still use Ashley Street regardless of separate lanes, and less confident users could choose a quieter route that did not require defined markings.
- *Felt a cycle lane running the full length of Ashley Street would also benefit the Rangiora High School Students.*

2. Significant Upcoming Projects in Rangiora – D Young (Senior Engineering Advisor), C Roberts (Graduate Engineer)

Presentation: Trim: 251210234882

Key Points:

- Townsend Road Culvert – January 2026 to March 2026: full road closure would occur in January 2026, with traffic lights in place from February 2026.
- Percival sewer replacement – March 2026 to July 2026: northbound road closure with a detour up King Street. Staff were currently meeting with businesses in the affected area.
- Blackett Street Stormwater – King Street to Durham Street August 2026 to December 2026: proposed eastbound lane closure with a detour via Andrew Street.
- Blackett Street Stormwater – Durham to Good Street August 2026 to December 2026: eastbound lane closure with detour via Tyler Street.
- Blackett Street Stormwater – Good Street to Ashley Street, June 2026 to December 2026: still considering options for how to best redirect traffic.
- Blackett Street Stormwater – Edward Street: southwest-bound lane closure with a detour via Prince Street. The Phoenix Palm would have to be removed.
- High Street Water – due to recent pipe bursting and condition reports, the mains would need to be replaced. There was currently no budget set aside for this.
- The Southbrook Road culvert: if replaced, there would be significant traffic effects. Considering the option of relining.

Questions/Issues/Feedback:

- *Could the palm tree be replanted elsewhere?*
Staff would further investigate.
- *Would the intersection at Townsend Road and Fernside Road be upgraded?*
The designation was in place, and the land was purchased; however, the upgrade was in the latter years of the Council's 2024/34 Long Term Plan.
- *Would staff recommend sealing roads in the winter months?*
It was difficult to seal roads at a time of year when the weather would not affect them. When hot sealing, it was less of an issue; however, chipping sealing was not recommended during the winter months.

3. Landscaping Budget – G Stephens (Design and Planning Team Leader) and A Huang (Landscape Planner)

Presentation: Trim: 251217241167

Key Points:

- The General Landscaping Budget was an annual budget allocated to the Community Boards.
- Greenspace had been requested to undertake a review of the General Landscape Fund, which would be presented to the Council for the 2027/37 Long Term Plan.
- The Board had a budget of \$29,290 for the 2025/26 financial year.
- Recent requests received included installing park benches at Accacia Avenue SMA and Rangiora Park Lawn Cemetery. The estimated cost of these benches would be \$3,500 each.
- Another idea was the installation of a sculpture at MainPower Stadium. The sculpture was commissioned by the Waimakariri Public Arts Trust and was fully funded through sponsorship and Trust funds.

Questions/Issues/Feedback:

- *Was the work at Milton Reserve complete, and would any further budget allocation be needed?*
A report on the completion of the path would be presented to the Board in early 2026. If a major realignment were required, there may be extra budget needs. There was minimal plant failure: three trees died, and four were stolen; however, they were all replaced.

4. Members Forum

Key Points:

- The annual review of the Community Board Plan would take place in January and February 2026.
- Board members were requested to submit amendments or suggestions they wish to make to the Governance Team in January 2026.
- The Governance Team update the Board Plan for discussion at the February 2026 Board meeting, with the aim of approval at the March 2026 meeting.

THERE BEING NO FURTHER BUSINESS, THE WORKSHOP CONCLUDED AT 9.20PM.

WAIMAKARIRI DISTRICT COUNCIL**REPORT FOR DECISION****FILE NO and TRIM NO:** RDG-03-09 / 260116006869**REPORT TO:** RANGIORA-ASHLEY COMMUNITY BOARD**DATE OF MEETING:** 11 February 2026**AUTHOR(S):** Nithin Puthupparambil, Transportation Engineer
Shane Binder, Senior Transportation Engineer**SUBJECT:** Request to Approve the Extension of No-Stopping Restrictions on Southbrook Road.**ENDORSED BY:**
(for Reports to Council,
Committees or Boards)
General Manager
Chief Executive**1. SUMMARY**

1.1. This report seeks approval to extend no-stopping restrictions at the following locations (refer to Figure 1):

- Southbrook Road, on the east side of the road, 18.5m south of the existing restriction, starting at the northern end of driveway to 66A, 66B, and 66 Southbrook Road and ending at northern end of driveway to 66A Southbrook Road (total length of no stopping is 18.5m).
- Southbrook Road, on the west side of the road, from 6m to the south of the existing restriction, starting at the southern end of 55A, and 55 Southbrook Road and ending at 13m from the northern end of driveway to 53D Southbrook Road (total length of no stopping is 6m).

1.2. Staff have received requests from the public regarding vehicles parking across the cycle lanes on this section of Southbrook Road. These vehicles are stopping within the taper area leading into the parking area, where there is insufficient space for parking.

1.3. The width is not sufficient to safely accommodate parked vehicles without encroaching into the cycle lanes, which compromises cyclist safety and creates conflict between different road users.

1.4. Staff have undertaken a review of the location and determined that extending the No Stopping restrictions to reinforce that parking should not occur in this area is necessary to ensure the cycle lanes remain unobstructed. This measure will prevent vehicles from attempting to park in this location which is not suitable for parking, and ensure that the cycle lane remains clear and safe for use.

2. RECOMMENDATION

THAT the Rangiora-Ashley Community Board:

(a) **Receives** Report No. 260116006869.

AND

THAT the Rangiora-Ashley Community Board recommends:

THAT the Utilities and Roothing Committee:

(b) **Approves** installation of the following no-stopping restrictions:

- Southbrook Road, on the east side of the road, for a length of 18.5m south of the existing restriction, starting at the northern end of driveway to 66A, 66B, and 66 Southbrook Road and ending at northern end of driveway to 66A Southbrook Road.
- Southbrook Road, on the west side of the road, for a length of 6m to the south of the existing restriction, starting at the southern end of 55 A, and 55 Southbrook Road and ending at 13m from the northern end of driveway to 53D Southbrook Road.

(c) **Notes** that this extension of existing no-stopping restrictions will not result in on-street parking loss, as the areas are not designed for parking and are too narrow to safely accommodate parking.

3. **BACKGROUND**

- 3.1. Southbrook Road is a Strategic Road with an average daily traffic (ADT) of 25,889 vehicles. The route includes marked on-road cycle lanes on both sides to support safe cycling movements towards the town centre.
- 3.2. The section of Southbrook Road south of the South Belt intersection has a constrained carriageway width. While the road layout accommodates general traffic lanes, including additional lanes for right-turning traffic at intersections and designated cycle lanes, it does not provide sufficient width to safely support on-street parking throughout the length of the road.
- 3.3. When vehicles are parked in the taper (transition) area between designated parking lanes and No Stopping restrictions, they encroach into the cycle lanes, forcing cyclists to merge into the adjacent traffic lane and creating high-risk interactions between cyclists and motor vehicles. These areas are not considered to be appropriate for parking.
- 3.4. Site inspections confirm that some vehicles are parking in such a way that they protrude into the cycle lanes at this location, obstructing the intended cycling space and reducing safety for cyclists. The current No Stopping restrictions end just north of the observed issue, resulting in some drivers stopping in a section of road that is not designed to safely accommodate parking.

4. **ISSUES AND OPTIONS**

- 4.1. Staff have received service requests regarding vehicles parking within the cycle lanes on Southbrook Road, south of the South Belt intersection. Vehicles stopping in this area obstruct the cycling facility, forcing cyclists into the adjacent traffic lane and creating a safety concern for all road users.
- 4.2. It is noted that the constrained carriageway width, combined with the lane taper (transitions) and turning lanes at nearby intersections, means that on-street parking cannot be safely accommodated at this location.
- 4.3. Parking in the taper (transition) area between the existing No Stopping restrictions and adjacent driveways results in encroachment into the cycle lanes, significantly reducing the operational safety and continuity of the cycling network.
- 4.4. To mitigate these safety concerns, it is recommended that No Stopping restrictions be extended on both sides of Southbrook Road, specifically:
 - On the east side of Southbrook Road, 18.5 metres south from the end of the existing restriction, currently at the northern end of the driveway to 66A, 66B, and 66 Southbrook Road.

- On the west side of Southbrook Road, 6 metres south from the end of the existing restriction, currently at the southern end of 55A and 55 Southbrook Road.

These extensions will ensure the cycle lanes remain unobstructed and improve safety for people cycling and driving.

- 4.5. It is noted that these no-stopping extensions will not result in on-street parking loss, as the areas are not designed for parking and are too narrow to safely accommodate parking



Figure 1 – Proposed extends of no stopping restrictions, Southbrook Road.

- 4.6. The Rangiora-Ashley Community Board has the following options available to them:
- 4.7. Option One: Approve the extension of No Stopping restrictions on both sides of Southbrook Road.

This option would have the Rangiora-Ashley Community Board recommend that the Utilities and Roading Committee approve the installation of no-stopping restrictions as shown in Figure 1.

This is the recommended option, as it ensures that the cycle lanes remain clear, reduces conflicts between cyclists and vehicles, and improves safety for all road users.

- 4.8. Option Two: Approve No Stopping restrictions on one side of Southbrook Road.

This option would have the Rangiora-Ashley Community Board recommend that the Utilities and Roading Committee approve extending the No Stopping restriction on only one side of Southbrook Road.

This is not the recommended option, as extending the restriction on only one side would not fully address the safety concerns identified. Vehicles could continue to park on the opposite side of the road, leading to ongoing obstruction of the cycle lane and continued conflict between cyclists and general traffic.

- 4.9. Option Three: Retain the status quo.

- 4.10. This option would result in no changes to the current No Stopping restrictions.

This is not the recommended option, as it would allow unsafe parking to continue, resulting in ongoing safety and access issues for cyclists and other road users.

Implications for Community Wellbeing

There are implications on community wellbeing by the issues and options that are the subject matter of this report.

These proposed extensions to the no-stopping restrictions are intended to maintain safe and efficient operation of the road corridor by keeping cycle lanes clear of parked vehicles, thereby improving safety for cyclists and reducing conflicts between different road users while still providing appropriate access for nearby properties.

- 4.11. The Management Team has reviewed this report and support the recommendations.

5. COMMUNITY VIEWS

5.1. Mana whenua

Te Ngāi Tūāhuriri hapū are not likely to be affected by or have an interest in the subject matter of this report.

5.2. Groups and Organisations

There are groups and organisations likely to be affected by, or to have an interest in the subject matter of this report.

Seven Letters were sent to the residents adjoining the proposed No Stopping restrictions, soliciting their feedback on the restrictions.

One response from the resident of 66A opposing the proposal was received.

5.3. Wider Community

The wider community is not likely to be affected by, or to have an interest in the subject matter of this report; the impacts of roadside management are considered to be localised and minor in nature. It is noted that no public consultation has been carried out with the wider community.

6. OTHER IMPLICATIONS AND RISK MANAGEMENT

6.1. Financial Implications

There are financial implications of the decisions sought by this report.

There are minimal costs associated with installing no-stopping lines along these streets, as all it involves is line marking. The total cost is estimated to be less than \$250, which can be accommodated within the Road Maintenance budgets (Pavement Marking GL 10.270.582.2500).

This budget is included in the Annual Plan/Long Term Plan.

6.2. Sustainability and Climate Change Impacts

The recommendations in this report do not have sustainability or climate change impacts.

6.3. Risk Management

There are not risks arising from the adoption/implementation of the recommendations in this report.

6.4. Health and Safety

There are health and safety risks arising from the adoption/implementation of the recommendations in this report.

The safety of all road users is important, and cyclists are amongst the most vulnerable of our road users. This area is also close to a school. While many children will choose to use the footpath, it is important that on-road facilities are as safe as possible.

Physical works will be undertaken through the Road Maintenance contract. The Road Maintenance contractor has a Health and Safety Plan and a SiteWise score of 100.

7. **CONTEXT**

7.1. **Consistency with Policy**

This matter is not a matter of significance in terms of the Council's Significance and Engagement Policy.

7.2. **Authorising Legislation**

Section 2 of the Land Transport Rule: Traffic Control Devices requires a Road Controlling Authority to "authorise and, as appropriate, install or operate traffic control devices."

7.3. **Consistency with Community Outcomes**

The Council's community outcomes are relevant to the actions arising from recommendations in this report. This report considers the following outcomes:

Social: a place where everyone can have a sense of belonging

- *Our community has equitable access to the essential infrastructure and services required to support community wellbeing.*

Economic: a place that is supported by a resilient and innovative economy

- *Enterprises are supported and enabled to succeed.*
- *Infrastructure and services are sustainable, resilient, and affordable. There is a safe environment for all.*

7.4. **Authorising Delegations**

As per Section 3 of the Waimakariri District Council's Delegations Manual, the Rangiora-Ashley Community Board has the delegated authority to consider matters within its ward area.

The Utilities and Roading Committee has the delegated authority to approve No Stopping restrictions.

WAIMAKARIRI DISTRICT COUNCIL**REPORT FOR DECISION****FILE NO and TRIM NO:** RDG-03-09 / 260109002898**REPORT TO:** RANGIORA-ASHLEY COMMUNITY BOARD**DATE OF MEETING:** 11 February 2026**AUTHOR(S):** Shane Binder, Senior Transportation Engineer
Joanne McBride, Roothing and Transport Manager**SUBJECT:** Request to Approve Golding Avenue No-Stopping Restrictions**ENDORSED BY:**
(for Reports to Council,
Committees or Boards)
General Manager
Chief Executive**1. SUMMARY**

- 1.1. This report seeks approval to establish no-stopping restrictions at the following locations:
- Eastern side of Golding Avenue, for a length of 11m north of the driveway to no. 22 Golding Avenue; and,
 - Western side of Golding Avenue, from a point 10m south of the driveway to no's 19-31 Golding Avenue, for a length of 11m south.
- 1.2. A no-stopping restriction on Golding Avenue was previously considered and not approved by the Rangiora-Ashley Community Board in July 2025. The Community Board requested the matter be revisited in November 2025.
- 1.3. Staff have received service requests from area residents concerning potential conflicts with parking on the back-to-back curves in Golding Avenue.
- 1.4. There is strong on-street parking demand in this area with parking up to the bends, due to a number of supported-living residential facilities located in this area. This contributes to limited visibility through the curves.
- 1.5. It is recommended that no stopping restrictions be installed at this location to better support safe use of the roadway.

Attachments:

- i. Report to Rangiora-Ashley Community Board, 9 July 2025, Request approval of No Stopping Restrictions – Golding Avenue, Cust Road, and Papawai Drive (TRIM 250227032830)

2. RECOMMENDATION**THAT** the Rangiora-Ashley Community Board:

- (a) **Receives** Report No. 260109002898.

AND**THAT** the Rangiora-Ashley Community Board recommends:**THAT** the Utilities and Roothing Committee:

- (b) **Approves** installation of the following no-stopping restrictions:

- Eastern side of Golding Avenue, for a length of 11m north of the driveway to no. 22 Golding Avenue.
 - Western side of Golding Avenue, from a point 10m south of the driveway to no's 19-31 Golding Avenue, for a length of 11m south.
- (c) **Notes** that properties adjoining the proposed no-stopping restrictions were sent consultation letters in July 2025, but no feedback was received.

3. **BACKGROUND**

- 3.1. Golding Avenue is a local urban residential street with an average daily traffic (ADT) volume of 708 vehicles and an operating (85th percentile) speed of 44.7 km/h, observed in 2025. It serves as a local connection between the Collector Roads of Kingsbury Avenue and Enverton Drive.
- 3.2. The street has a back-to-back “S-bend” between no. 17 and no. 33 Golding Avenue. A private right-of-way serving six rear lots enters Golding Avenue midway through the curve.
- 3.3. There is increased parking demand near the S-bend due to a number of supported-living residential facilities located in this area.
- 3.4. Stopping sight distance is a measurement of forward visibility required for a motorist to come to a stop in an unexpected event. Due to the geometry of the back-to-back curves at this location, vehicles parked in front of no. 22 and nos. 19-31 Golding Avenue impede the minimum stopping sight distance recommended in the Austroads Guide to Road Design Part 3.
- 3.5. A request for no-stopping restrictions at these two locations was taken to the 9th July 2025 Rangiora-Ashley Community Board (TRIM 250227032830, attached). The proposed no-stopping restrictions are shown below in Figure 1.



Figure One: No-stopping restrictions proposed in July 2025

- 3.6. At the meeting, a division was called on the request, which ultimately lost due to a tie vote.

4. **ISSUES AND OPTIONS**

- 4.1. At the 12th November 2025 Rangiora-Ashley Community Board meeting, a request was made for staff to revisit this issue.

4.2. The Rangiora-Ashley Community Board has the following options available to them:

4.2.1. Option One: Recommend installation of No-Stopping restrictions on Golding Avenue

This option would have the Rangiora-Ashley Community Board recommend that the Utilities and Roding Committee approve the installation of no-stopping restrictions at the locations on Golding Avenue shown above in Figure One.

This is the recommended option because it meets with Safe Stopping Distance (SSD) recommendations and enhances safety on Golding Avenue.

4.2.2. Option Two: Retain the status quo

This is not the recommended option because there are safety implications of not installing No-Stopping restrictions on Golding Avenue.

Implications for Community Wellbeing

There are implications on community wellbeing by the issues and options that are the subject matter of this report. These proposed improvements optimise existing infrastructure to provide safe access for residents within the district.

4.3. The Management Team has reviewed this report and support the recommendations.

5. COMMUNITY VIEWS

5.1. **Mana whenua**

Te Ngāi Tūāhuriri hapū are not likely to be affected by, or have an interest in the subject matter of this report.

5.2. **Groups and Organisations**

There are groups and organisations likely to be affected by, or to have an interest in the subject matter of this report. Consultation letters were sent to residents of the properties immediately adjoining the proposed no-stopping restrictions for the July 2025 report, but no feedback was received by staff.

5.3. **Wider Community**

The wider community is not likely to be affected by, or to have an interest in the subject matter of this report; the impacts of roadside management are considered to be localised and minor in nature. It is noted that no public consultation has been carried out with the wider community.

6. OTHER IMPLICATIONS AND RISK MANAGEMENT

6.1. **Financial Implications**

There are financial implications of the decisions sought by this report.

There are minimal costs associated with installing no-stopping lines along these streets, as all it involves is line marking. The total cost is estimated to be less than \$250, which can be accommodated within the Road Maintenance budgets (Pavement Marking GL 10.270.582.2500).

This budget is included in the Annual Plan/Long Term Plan

6.2. **Sustainability and Climate Change Impacts**

The recommendations in this report are considered to be localised and minor in nature and will not have sustainability or climate change impacts.

6.3. **Risk Management**

There are not risks arising from the adoption/implementation of the recommendations in this report.

6.4. **Health and Safety**

There are minor health and safety risks arising from the adoption/implementation of the recommendations in this report.

Physical works will be undertaken through the Road Maintenance contract. The Road Maintenance contractor has a Health and Safety Plan and a SiteWise score of 100.

7. **CONTEXT**

7.1. **Consistency with Policy**

This matter is not a matter of significance in terms of the Council's Significance and Engagement Policy.

7.2. **Authorising Legislation**

Section 2 of the Land Transport Rule: Traffic Control Devices requires a Road Controlling Authority to "authorise and, as appropriate, install or operate traffic control devices."

7.3. **Consistency with Community Outcomes**

The Council's community outcomes are relevant to the actions arising from recommendations in this report. This report considers the following outcomes:

Social: a place where everyone can have a sense of belonging

- *Our community has equitable access to the essential infrastructure and services required to support community wellbeing.*

Economic: a place that is supported by a resilient and innovative economy

- *Enterprises are supported and enabled to succeed.*
- *Infrastructure and services are sustainable, resilient, and affordable. There is a safe environment for all.*

7.4. **Authorising Delegations**

As per Section 3 of the Waimakariri District Council's *Delegations Manual*, the Rangiora-Ashley Community Board has the delegated authority to recommend the installation of no-stopping restrictions on roads within its ward area.

The Utilities and Roding Committee has the delegated authority to approve No Stopping restrictions.

WAIMAKARIRI DISTRICT COUNCIL**REPORT FOR DECISION**

FILE NO and TRIM NO: RDG-28 / 250227032830


REPORT TO: RANGIORA-ASHLEY COMMUNITY BOARD


DATE OF MEETING: 9 July 2025

AUTHOR(S): Shane Binder, Senior Transportation Engineer
Nithin Puthupparambil, Transportation Engineer

SUBJECT: Request approval of No Stopping Restrictions – Golding Avenue, Cust Road, and Papawai Drive

ENDORSED BY:
(for Reports to Council, Committees or Boards)


 General Manager


 Chief Executive

1. SUMMARY

- 1.1. This report seeks approval to establish No Stopping restrictions at the following locations:
- 11m north of the driveway to 22 Golding Avenue;
 - From a point 10m south of the driveway to 19-31 Golding Avenue, for 11m south;
 - 24m east of Earlys Road on the north side of Cust Road; and
 - 5m north of the access to Koura Reserve on Papawai Drive.
- 1.2. Staff have received a number of complaints concerning the following:
- 1.2.1. Potential conflicts with parking on the back-to-back curves in Golding Avenue
- 1.2.2. Car parking in front of the historical St David's Presbyterian Church in Cust, where the painted shoulder is insufficiently wide to safely accommodate vehicles outside of the travel lane
- 1.2.3. Parked vehicles blocking the pedestrian access to Koura Reserve from Papawai Drive
- 1.3. Staff have investigated all of the above complaints and concluded that in all three situations there is a strong case for installing No Stopping lines to better support safe parking and usage of the areas concerned.
- 1.4. It is recommended that stopping is prohibited at these three locations.

2. RECOMMENDATION

THAT the Rangiora-Ashley Community Board:

- (a) **Receives** Report No. 250227032830.

AND

THAT the Rangiora-Ashley Community Board recommends:

THAT the Utilities and Roading Committee:

- (b) **Approves** installation of the following no-stopping restrictions:
- i. 11m north of the driveway to 22 Golding Avenue, Rangiora.
 - ii. From a point 10m south of the driveway to 19-31 Golding Avenue, Rangiora, for 11m south.
 - iii. 24m east of Earlys Road, Cust on the north side of Cust Road.
 - iv. 5m north of the access to Koura Reserve on Papawai Drive, Rangiora.

3. **BACKGROUND**

3.1. Golding Avenue

- 3.1.1. Golding Avenue is a local road with an Average Daily Traffic (ADT) of 831 vehicles, serving as a connector between the Collector Roads of Kingsbury Avenue and Enverton Drive.
- 3.1.2. Golding Avenue offers access to the Rangiora Health Hub via Riverview Road, which intersects with River Road.
- 3.1.3. The mean operating speed was measured at 39.4 km/h in 2022. The street carries through a back-to-back “S-bend” between no. 17 and no. 33 Golding Avenue. A private right-of-way accessing six rear lots enters Golding Avenue midway through the curve.
- 3.1.4. There is high parking demand in the area due to Community Health facilities being located near the S-bend.

3.2. Cust Road

- 3.2.1. Cust Road is a Strategic Road (former State Highway 72) that intersects with Earlys Road at a T-junction in the middle of Cust village.
- 3.2.2. The Average Daily Traffic (ADT) is 3,217 on Cust Road. This intersection with a posted speed of 60 km/h and mean operating speed of 57 km/h (2024) requires careful navigation for safe turning manoeuvres.
- 3.2.3. A No Stopping restriction already exists on the north side of Cust Road, west of Earlys Road, where the shoulder is less than 1.5m wide.

3.3. Papawai Drive

- 3.3.1. Papawai Drive is a local road with an Average Daily Traffic (ADT) of 739 vehicles; the mean operating speed was measured at 36 km/h in 2019.
- 3.3.2. It provides one of the pedestrian accesses to Koura Reserve, a neighbourhood reserve with playground and recreational areas, which does not have any dedicated reserve parking.
- 3.3.3. The walkway is in a narrow link reserve between no. 18 and no. 22 Papawai Drive.

4. **ISSUES AND OPTIONS**

4.1. Staff have received service requests regarding the following:

- 4.1.1. Concerns regarding potential conflicts caused by parking on the back-to-back curves (S-bend) on Golding Avenue
- 4.1.2. Inquiries about car parking on the narrow shoulder in front of the former St. David's Presbyterian Church in Cust
- 4.1.3. Concerns regarding parked vehicles blocking the access to Koura Reserve on Papawai Drive

4.2. Golding Avenue:

- 4.3. Golding Avenue, classified as an urban local road with a 50 km/h speed limit, should adhere to specific stopping sight distance (SSD) recommendations as outlined in the Austroads Guide to Road Design Part 3(Technical design Guidance). Due to the back-to-back curve geometry in front of no. 22 and nos. 19-31 Golding Avenue, parking in these areas compromises the required SSD for safe driving conditions.
- 4.4. To enhance safety and meet SSD recommendations, it is recommended that no-stopping restrictions be implemented along the extent indicated by the yellow dashed line in Figure 1.



Figure 1. Proposed extents of no stopping restrictions, Golding Avenue

- 4.5. Cust Road:
- 4.6. In accordance with the Waimakariri District Council Engineering Code of Practice Section 8.6.3, a width of 2.5 meters is recommended for parallel parking on road carriageways. Furthermore, the Land Transport Rule: Road User Rule 2004 prohibits stopping, standing, or parking a vehicle within 6 meters of an intersection unless explicitly authorised by road signage or markings.
- 4.7. To maintain safe traffic operations at the Cust Road / Earlys Road intersection and comply with the above-mentioned regulations, it is recommended that no-stopping restrictions be implemented along the designated area marked by the yellow dashed line in Figure 2.
- 4.8. This proposed restriction will maintain an extra-long parking space on the east side of the driveway letdown, which meets parking requirements and is positioned sufficiently far from the intersection to avoid impeding traffic flow.

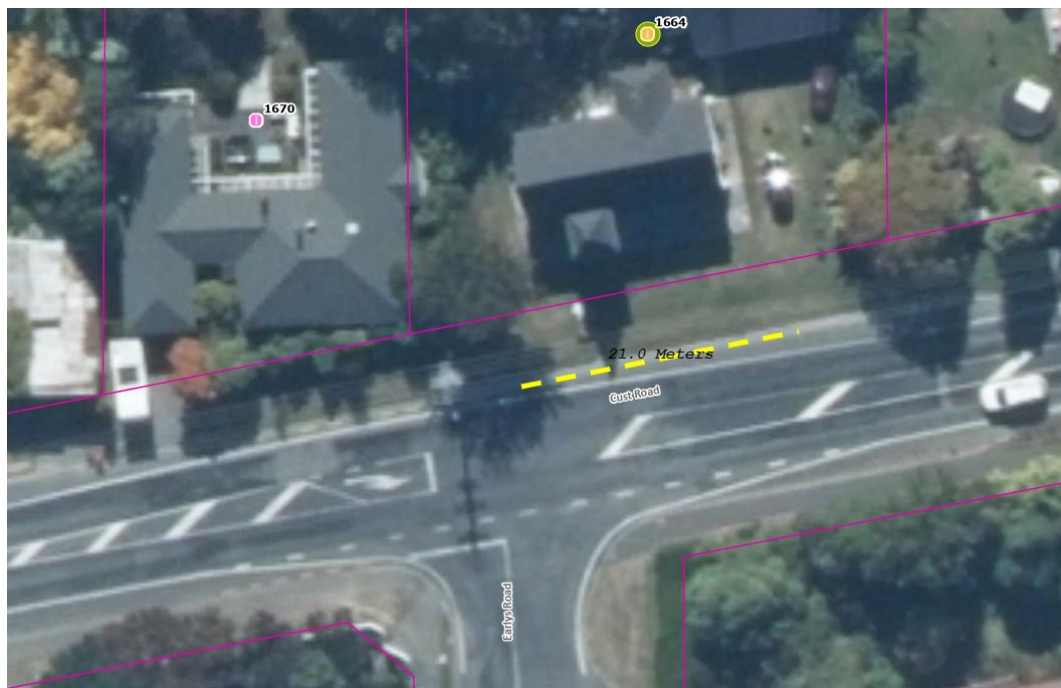


Figure 2. Proposed extents of no stopping restrictions, Cust Road

4.9. Papawai Drive:

- 4.10. Parked vehicles obstruct safe passage for pedestrians, strollers, and mobility scooters, particularly near the reserve's entrance. This creates hazards, forcing people into the road and hindering access to the reserve
- 4.11. To mitigate these safety concerns and ensure the well-being of all reserve users, it is recommended that no-parking restrictions be implemented along the section of Papawai Drive directly adjacent to the Koura Reserve access point, as marked by the yellow dashed line in Figure 3. This measure is recommended because there would be insufficient space in this section to maintain parking without obstructing pedestrian and mobility access.



Figure 3. Proposed extents of no stopping restrictions, Papawai Drive.

- 4.12. The Rangiora-Ashley Community Board has the following options available to them:

4.12.1. Option One: Approve the installation of no-stopping restrictions at the various locations in Rangiora and Cust.

This option would have the Rangiora-Ashley Community Board recommend that the Utilities and Roding Committee approve the installation of no-stopping restrictions at the location shown in Figure 1, 2, and 3.

This is the recommended option because it ensures:

- Meet with Safe Stopping Distance (SSD) recommendations and enhanced safety on Golding Avenue
- The safety of all road users at the intersection while ensuring that parallel parking on Cust Road complies with both regional and national regulations
- Safe access to Koura Reserve all users, including pedestrians, stroller users, and those with mobility scooters, while ensuring that parking on Papawai Drive complies with both regional and national regulations and prevents obstruction of the reserve access point

4.12.2. Option Two: Approve an ad-hoc installation of no-stopping restrictions.

This option would have the Rangiora-Ashley Community Board recommend that the Utilities and Roding Committee approve the installation of no-stopping restrictions at some, but not all of the locations shown in Figures 1, 2, and 3.

This is not the recommended option because there are safety implications of not installing no-stopping restrictions at all of the sites proposed in this report.

4.12.3. Option Three: Retain the status quo.

This is not the recommended option because there are safety implications of not installing no-stopping restrictions at all of the sites proposed in this report.

Implications for Community Wellbeing

There are implications on community wellbeing by the issues and options that are the subject matter of this report.

These proposed improvements provide infrastructure in terms of safety improvements which provide safe access for residents within the district.

- 4.13. The Management Team has reviewed this report and support the recommendations.

5. COMMUNITY VIEWS

5.1. Mana whenua

Te Ngāi Tūāhuriri hapū are not likely to be affected by, or have an interest in the subject matter of this report.

5.2. Groups and Organisations

There are groups and organisations likely to be affected by, or to have an interest in the subject matter of this report.

Letters were sent to the residents adjoining each of the proposed No Stopping restrictions, soliciting their feedback on the restrictions.

The property owner of no. 1664 Cust Road was consulted regarding the proposed No Stopping restriction at his residence, and he generally supported the proposal.

Property owners at Nos. 16, 18, 22, and 24 Papawai Drive provided generally positive responses. No other feedback was received from residents on Papawai Drive or Golding Avenue.

5.3. Wider Community

The wider community is not likely to be affected by, or to have an interest in the subject matter of this report; the impacts of roadside management are considered to be localised and minor in nature. It is noted that no public consultation has been carried out with the wider community.

6. OTHER IMPLICATIONS AND RISK MANAGEMENT

6.1. Financial Implications

There are financial implications of the decisions sought by this report.

There are minimal costs associated with installing no-stopping lines along these streets, as all it involves is line marking. The total cost is estimated to be less than \$250, which can be accommodated within the Road Maintenance budgets (Pavement Marking GL 10.270.582.2500). This budget is included in the Annual Plan/Long Term Plan.

6.2. Sustainability and Climate Change Impacts

The recommendations in this report are considered to be localised and minor in nature and will not have sustainability or climate change impacts.

6.3. Risk Management

There are not risks arising from the adoption/implementation of the recommendations in this report.

6.4. Health and Safety

There are minor health and safety risks arising from the adoption/implementation of the recommendations in this report.

Physical works will be undertaken through the Road Maintenance contract. The Road Maintenance contractor has a Health and Safety Plan and a SiteWise score of 100.

7. **CONTEXT**

7.1. **Consistency with Policy**

This matter is not a matter of significance in terms of the Council's Significance and Engagement Policy.

7.2. **Authorising Legislation**

Section 2 of the Land Transport Rule: Traffic Control Devices requires a Road Controlling Authority to "authorise and, as appropriate, install or operate traffic control devices."

7.3. **Consistency with Community Outcomes**

The Council's community outcomes are relevant to the actions arising from recommendations in this report. This report considers the following outcomes:

Social: a place where everyone can have a sense of belonging

- *Our community has equitable access to the essential infrastructure and services required to support community wellbeing.*

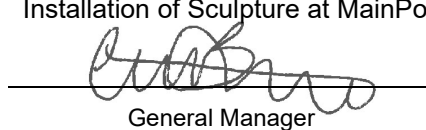
Economic: a place that is supported by a resilient and innovative economy

- *Enterprises are supported and enabled to succeed.*
- *Infrastructure and services are sustainable, resilient, and affordable. There is a safe environment for all.*

7.4. **Authorising Delegations**

As per Section 3 of the Waimakariri District Council's *Delegations Manual*, the Rangiora-Ashley Community Board has the delegated authority to recommend the installation of no-stopping restrictions on roads within its ward area.

The Utilities and Roading Committee has the delegated authority to approve No Stopping restrictions.

WAIMAKARIRI DISTRICT COUNCIL**REPORT FOR DECISION****FILE NO and TRIM NO:** CMS-17-02 / GOV-26-11-06 / 260122010759**REPORT TO:** RANGIORA-ASHLEY COMMUNITY BOARD**DATE OF MEETING:** 11 February 2026**AUTHOR(S):** Mel Foster, Community Development Facilitator - Arts Strategy Implementation
Grant MacLeod, Greenspace Manager**SUBJECT:** Installation of Sculpture at MainPower Stadium**ENDORSED BY:**
(for Reports to Council,
Committees or Boards)
General Manager
Chief Executive**1. SUMMARY**

- 1.1. This report seeks approval to install a sculpture created by artist Sharon Earl at MainPower Stadium.
- 1.2. The sculpture has been commissioned by Waimakariri Public Arts Trust (WPAT) and is fully funded by sponsorship and Trust funds.
- 1.3. Given MainPower stadium's close proximity to the Ashley-Rakahuri River, this sculpture will depict the river's currents, eddies and the water's erosive effect on rock over time.
- 1.4. Permission is sought to allocate up to \$2,000 from the Rangiora Ashley Community Board's General Landscaping Budget as a discretionary fund to cover any unforeseen installation costs at the request of the Waimakariri Public Arts Trust.
- 1.5. Attachments:
 - i. Photos of previous work by Sharon Earl. TRIM: 260127013353
 - ii. Email of support from North Canterbury Sport and Recreation Trust TRIM: 260127013347

2. RECOMMENDATION**THAT** the Rangiora-Ashley Community Board:

- (a) **Receives** Report No. 260122010759.
- (b) **Approves** installation of the sculpture, created by Sharon Earl, at MainPower Stadium.
- (c) **Approves** up to \$2,000 of discretionary funding from the Rangiora Ashley Community Board's General Landscaping Budget to cover unforeseen installation costs.
- (d) **Notes** that the proposed location of the sculpture in MainPower Stadium has been agreed between the Waimakariri Public Arts Trust, the Council and the North Canterbury Sport and Recreation Trust.
- (e) **Notes** that the sculpture will be owned and maintained by Council with ongoing maintenance costs being covered by existing Greenspace Maintenance Budgets (10.538.811.2507).

3. **BACKGROUND**

- 3.1. The purpose of Waimakariri Public Arts Trust (WPAT) is to promote art and culture in the Waimakariri District, raise funds to enable the commission of artworks, educate the public about art and artists, and support arts projects and events in the community.
- 3.2. In 2022 WPAT trustees met with MainPower Stadium representatives to discuss the possibility of installing a public art piece in the outside grounds at the stadium. WPAT trustees considered two proposals from local artists and agreed on Amberley artist, Sharon Earl. The artist came up with some initial ideas on a sculpture, but unfortunately this initial project failed to acquire adequate funding and stalled.
- 3.3. WPAT continued to accumulate funds through grants and donations and managed to secure the full cost of the project of \$25,000 in 2025. Various meetings were held with Sharon Earl over the year and the project was reinstated.
- 3.4. The North Canterbury Sports and Recreation Trust (NCSRT) manage the lease for the MainPower Stadium. In December 2025 WDC staff met with Rosie Oliver, Michael Sharp and Paul Dunn to discuss the concept and the proposed sculpture location. NCSRT expressed support of the conceptual drawings and agreed on a location in one of the garden squares underneath the metal canopy – refer Figures 6 & 7.
- 3.5. **About the artist**
 - 3.5.1. Sharon Earl is an Amberley artist who creates life-sized sculptures from her workshop in North Canterbury. She makes sculptures in a filigree style and has completed many pieces including commissions for the Hurunui District Council and exhibiting in the Sculpture on Shore exhibition in Devonport. She is a well respected artist and her intricate shaped work can be seen around the Hurunui district. Further examples of the artist's previous work are attached - Appendix 1.



Figure 1: Moa commission by Hurunui District Council.

3.6. About the sculpture

- 3.6.1. The artist has provided the following vision for the work proposed for MainPower Stadium:

The positioning of this sculpture in its prominent proposed site at MainPower Sports Stadium, and its very close proximity to the Ashley-Rakahuri River, naturally suggested to combine the energies of athleticism and river flow.

This sculpture will be a pleasing oval/round shaped form with an internal void inviting viewers to sit within it. Its steel rod imagery will depict the river's currents, eddies and the water's erosive effect on rock over time. It may also include a sculptural inclusion of the iconic bird life that the river's catchment supports.

As a sculptor, my hope is always to create a beautiful timeless form that is smoothed by a multitude of curious hands. Human experiences enriched by a brief but memorable interaction with art is to me the aim, the motivation, and a priceless outcome.



Figure 2: Artistic impression of proposed new sculpture.

- 3.6.2. It is envisaged the sculpture will be around 3 metres in size in the shape of a sphere with an inside seating area. The structure itself will include the intricate woven detail of river flow, nature and birds as shown in the artist's previous work.
- 3.6.3. Since the sculpture is designed for people to sit inside, the artist is aware that it must be carefully assessed to eliminate sharp edges, protrusions, or features that could pose a risk to children climbing or placing their hands. The design will provide a safe seating area that is free from sharp edges and structurally capable of supporting weight.
- 3.6.4. Due to its location being close to the stadium, it is anticipated that many visitors will easily be able to sit in, view and appreciate the sculpture.

3.7. Proposed site

3.7.1. The proposed site for the installation is underneath the metal canopy area of the stadium as identified in the pictures below.



Figure 3: Proposed location of sculpture.



Figure 4: Metal courtyard, MainPower Stadium.



Figure 5 and 6: Close-up of proposed location.

- 3.7.2. NCSRT has been consulted on the proposed site of the installation and supports the location in the garden bed as pictured in Figures 6 and 7. It is envisaged that the garden will grow around the side of the sculpture, but some plants will need to be removed to allow for installation and for a clear path to the seating area inside the sculpture.
- 3.7.3. There are plans to install solar panels in the complex. However, this will not have an impact on the location of the sculpture.

3.8. **Timeframe and installation**

- 3.8.1. The sculpture will be installed by crane by an approved council contractor onto a concrete plinth. It is envisaged that the structure will be fully secured through bolts into the plinth. The artist is unable to confirm final details until fabrication of the sculpture evolves.
- 3.8.2. Some of the garden will need to be removed to allow for the sculpture to be installed.
- 3.8.3. It is envisaged that fabrication will take approximately 3-4 months to complete once the project is confirmed to go ahead.
- 3.8.4. Installation is therefore expected to be around the middle of the year with plans for a suitable launch to be organised shortly afterwards.

4. **ISSUES AND OPTIONS**

- 4.1. It is anticipated that the sculpture will naturally rust but may need a clean to remove moss and mould as required. Alternatively, the structure could be sprayed to prevent the rusting – however it is both the artist's and WPAT's view that the natural oxidation process would complement the artwork better and it is preferred to leave to age naturally. It is envisaged that ongoing maintenance would be a wash down annually at a cost of approximately \$300 p.a. This work will be carried out by Council contractors as necessary within existing Greenspace budgets (10.538.811.2507).
- 4.2. There are three options available:
 - 4.2.1. Approve installation of the sculpture into MainPower Stadium with a contingency fund of up to \$2,000 coming out of Rangiora Ashley Community Board's General Landscaping Budget. This is the preferred option as it means the project isn't delayed if there are unforeseen costs with the installation. The identified location is approved by the adjacent leaseholders, and it is believed the sculpture will further enhance the aesthetics of MainPower Stadium.
 - 4.2.2. Approve installation of the sculpture into MainPower Stadium with no contribution from the Board's General Landscaping Budget to installation costs. This is not a preferred option as it would necessitate additional funds needing to be raised if there are unforeseen costs with installation.
 - 4.2.3. Do not accept the sculpture. This is not a preferred option as it would reflect negatively on the Council's commitment to grow its public art collection through the Ngā Toi o Waimakariri Arts Strategy.
 - 4.2.4. Approve acceptance of the sculpture but into a different location. This is the least preferred option given it would require a repetition in consultation regarding the location of the sculpture

4.3. **Implications for Community Wellbeing**

There are implications on community wellbeing by the issues and options that are the subject matter of this report.

Art in public places contributes to the cultural wellbeing of the community. Art creates a sense of place and reflects our history and culture in a unique way. Public art works create conversation and reflection amongst the community and contribute to the diversity of our public spaces.

4.4. The Management Team has reviewed this report and support the recommendations.

5. **COMMUNITY VIEWS**

5.1. **Mana whenua**

Te Ngāi Tūāhuriri hapū are not likely to be affected by or have an interest in the subject matter of this report.

As WPAT has managed all engagement with the artist as part of their commissioning process, Council has not undertaken separate correspondence with Te Ngāi Tūāhuriri hapū regarding the proposed sculpture or location.

5.2. **Groups and Organisations**

There are groups and organisations likely to be affected by, or to have an interest in the subject matter of this report.

- Waimakariri Public Arts Trust
- North Canterbury Sports and Recreation Trust.

5.3. **Wider Community**

The wider community is likely to be affected by, or to have an interest in the subject matter of this report. Given that the sculpture is being proposed for a high profile public space it may generate some community interest. It is anticipated that the sculpture will add creative value to this space and receive a positive response from interested members of the community.

6. **OTHER IMPLICATIONS AND RISK MANAGEMENT**

6.1. **Financial Implications**

There are financial implications of the decisions sought by this report.

6.1.1. This budget is not included in the Annual Plan/Long Term Plan. This report suggests a contingency fund of up to \$2,000 if needed towards installation. This has resulted in the recommendation for the Board to fund installation contingency costs of the sculpture through their General Landscaping Budget. If funding is not allocated from the Board's General Landscaping Budget, WPAT may need to source additional external funding to allow the project to progress.

6.1.2. Maintenance costs

Maintenance costs are expected to be minimal and will be covered by existing Greenspace budgets (10.538.811.2507).

6.1.3. Depreciation costs

There will be an increase in depreciation costs.

6.2. **Sustainability and Climate Change Impacts**

The recommendations in this report do not have sustainability and/or climate change impacts.

6.3. **Risk Management**

There are risks arising from the adoption/implantation of the recommendations in this report.

- It is possible that members of the community may not like the sculpture or its location. One important outcome from public art is the stimulation of conversation and opinion and an appreciation for the role art can play in our public spaces. It is hoped that this sculpture will generate conversation regarding art. However, given its location it is unlikely to generate significant negative opinion or dislike where the location or installation will need to be revisited.
- With any public art, there is a risk of vandalism. This may mean that from time to time the sculpture may need to be repaired or cleaned to maintain its condition. It is thought this sculpture in this location is likely to have a low risk of frequent vandalism.
- Since the sculpture is designed for people to sit inside, it must be carefully assessed to eliminate sharp edges, protrusions, or features that could pose a risk to children climbing or placing their hands. The design must provide a safe seating area that is free from sharp edges and structurally capable of supporting weight.
- People sitting inside the sculpture may get some dirt or small amount of rust on their clothes. However, it is envisaged that this would be minimal.
- All artwork has a life span when exposed to the elements and can degrade over time. It is recommended that Council and WPAT assess the condition of the piece and its location every five years to ensure it continues to add value to the setting and serve its purpose.
- There is a low risk that changes to the outside area of the Stadium or its environment may mean that the sculpture is required to be shifted or removed. Should this occur, then WPAT would consult with the Community Board around other possible locations for the sculpture.

6.4. **Health and Safety**

There are health and safety risks arising from the adoption/implementation of the recommendations in this report.

- Being located in a public space there is a risk, that children or youth could interact with the sculpture. The piece has no moving parts and will be assessed for sharp edges or potential hazards. Furthermore it will be securely fixed onto a concrete plinth and is envisaged as a low risk.
- Installation of the sculpture will be carried out by approved Greenspace contractors to ensure that it is installed using the appropriate health and safety guidelines and does not present an ongoing risk to the public.

7. **CONTEXT**

7.1. **Consistency with Policy**

This matter is not a matter of significance in terms of the Council's Significance and Engagement Policy.

7.2. **Authorising Legislation**

Local Government Act

7.3. **Consistency with Community Outcomes**

The Council's community outcomes are relevant to the actions arising from recommendations in this report.

Cultural

- Public spaces express our cultural identities and help to foster an inclusive society.
- The distinctive character of our takiwā / district, arts and heritage are preserved and enhanced.
- Waimakariri's diversity is freely expressed, respected and valued.
- There is an environment that supports creativity and innovation for all.

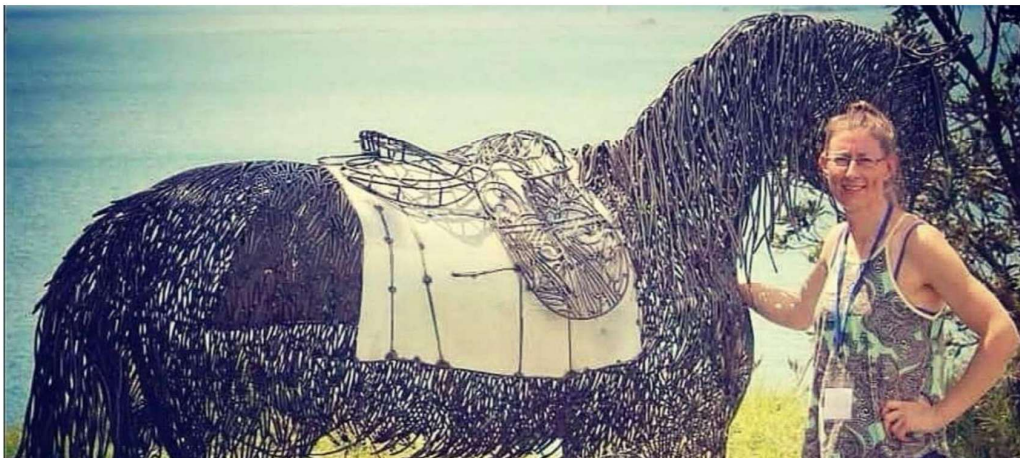
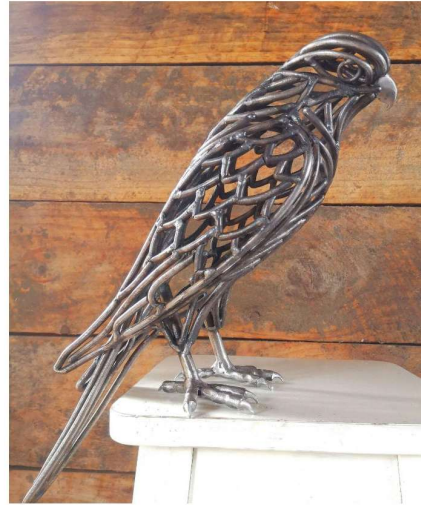
Social

- Public spaces are diverse, respond to changing demographics and meet local needs for leisure and recreation.

7.4. **Authorising Delegations**

The Rangiora-Ashley Community Board has delegated authority to approve the recommendations in this report.

Appendix 1: Further examples of artist's work



Mel Foster

From: [REDACTED]
Sent: Wednesday, 17 December 2025 2:55 pm
To: Mel Foster
Subject: RE: Proposed sculpture at Mainpower Stadium

Caution: [THIS EMAIL IS FROM AN EXTERNAL SOURCE] DO NOT CLICK links or attachments unless you recognise the sender email

Mel,

Thanks for your visit today to confirm the placement of a new sculpture (pictures supplied) on the northwest side of MainPower Stadium.
Our Trust is happy to have this placed in one of the gardens on this side of the building under the metal canopy.

Kind regards

[REDACTED]
Operations Manager
North Canterbury Sport and Recreation Trust



From: Mel Foster <mel.foster@wmk.govt.nz>
Sent: Wednesday, December 17, 2025 12:15 PM
To: [REDACTED]
Cc: Jill Borland <jill.borland@wmk.govt.nz>
Subject: Proposed sculpture at Mainpower Stadium

Kia ora [REDACTED]

Thanks so much for your, Paul and Michael's time this morning. Really appreciated the chance to discuss the sculpture proposal by artist Sharon Earl to sit in the Mainpower Stadium's courtyard.

Great to hear that your team were all supportive of the sculpture concept and could see no issues with the suggested location. Could I trouble you to drop a line to this effect so that we can include in our report to the Rangiora-Ashley Community Board as confirmation of the Trust's approval.

WAIMAKARIRI DISTRICT COUNCIL**REPORT FOR DECISION****FILE NO and TRIM NO:** GOV-26-11-06 / 260126012243**REPORT TO:** RANGIORA-ASHLEY COMMUNITY BOARD**DATE OF MEETING:** 11 February 2026**AUTHOR(S):** Thea Kunkel, Governance Team Leader**SUBJECT:** Request for inclusion of new names to the Pre-Approved Rangiora-Ashley Community Board's Road and Reserve Names List**ENDORSED BY:**
(for Reports to Council,
Committees or Boards)
General Manager
Chief Executive**1. SUMMARY**

1.1 The purpose of this report is to consider adding new names to the Pre-Approved Rangiora-Ashley Community Board's (the Board) Road and Reserve Names List.

Attachments:

- i. Information supporting the inclusion of Dalkeith in the Pre-Approved Rangiora-Ashley Community Board's Road and Reserve Names List (Trim Ref: 260126012603).
- ii. Information supporting the inclusion of Purvis in the Pre-Approved Rangiora-Ashley Community Board's Road and Reserve Names List (Trim Ref: 260126012605).
- iii. Waimakariri District Naming Policy (Trim 230321039443).
- iv. Pre-Approved Community Boards Road and Reserve Names List (Trim 251107212027).

2. RECOMMENDATION

THAT the Rangiora-Ashley Community Board:

- (a) **Receives** Report No. 260126012243.
- (b) **Approves** including the name Dalkeith in the Pre-Approved Rangiora-Ashley Community Board's Road and Reserve Names List.
OR
- (c) **Declines** the inclusion of the name Dalkeith in the Pre-Approved Rangiora-Ashley Community Board's Road and Reserve Names List.
- (d) **Approves** including the name Purvis in the Pre-Approved Rangiora-Ashley Community Board's Road and Reserve Names List.
OR
- (e) **Declines** the inclusion of the name Purvis in the Pre-Approved Rangiora-Ashley Community Board's Road and Reserve Names List.

3. BACKGROUND

3.1. The Waimakariri District Council is responsible for naming (and renaming) roads within its boundaries. Roads are named to reflect the local area's identity and ensure ease of identification for the Council and the public, as well as key public and private services such as emergency, postal, and courier services.

- 3.2. The Council's four Community Boards have the delegated authority to name new streets and roads and amend existing street names within their respective ward areas.
- 3.3. A Master List of Pre-approved Road and Reserves names was compiled to assist developers when submitting requests for road names within the area with names that reflect local significance.
- 3.4. Potential road names will remain on the pre-approved list until they are either allocated to a road or removed due to a list review. In addition, a road name may no longer be in use if two or more roads are combined into a single road or if a road is permanently closed. The road name(s) may be returned to the list in both cases.

4. **ISSUES AND OPTIONS**

- 4.1. In 2025, Board members expressed concern about the scarcity of names on its Master List of Pre-approved Road and Reserve names. Board members undertook to encourage members of the public to suggest names for inclusion in the list.
- 4.2. Subsequently, staff received the following names, from members of the public, to be considered and added to the List of Pre-approved Road names for the Rangiora-Ashley Ward:

- Dalkeith

Motivation for the request provided by Cath Kennedy (née Corbett)

Don and Hilda Corbett arrived in the Waimakariri District in 1959 and purchased The Plough Hotel in Rangiora in 1964. Throughout their tenure, they provided significant support and sponsorship to numerous sports clubs and teams, educational and senior citizen groups, Rangiora St John Ambulance, the Waikuku Surf Lifesaving Club's rescue boat, the Rangiora Fire Brigade, the Westpac Helicopter Service, McAlpine's Pipe Band, the Rangiora Brass Band, Plunket, and the Rangiora Hospital.

The Corbetts earned widespread respect for their decades of dedicated service to the local community. In 1973, they purchased the land at 63 Oxford Road and 212 Johns Road, which they continued to develop and care for as they expanded their long-standing interest in horse racing, training, and breeding. This land, formerly owned by the Corbett family, is now scheduled for residential development. Dalkeith Holdings is the Corbett's holding company.

- Purvis

Motivation for the request provided by Fiona Hill

The Purvis family has been part of the Rangiora community since 1897, when Robert Purvis married Kate McIntosh in Rangiora, and the couple established their home at 83 Oxford Road. The wider Purvis family had seven children, three of whom served during the Second World War. Hector Purvis was killed in action, and all three brothers are commemorated in the Fernside Community Hall.

Following the war, the Purvis family settled on Lehmans Road, Rangiora, where they became active and committed members of the community — a tradition of service that continues to this day.

- 4.3 When naming roads, streets, parks, and reserves, the Board needs to ensure that it selects suitable and complies with the Waimakariri District Naming Policy. The Board would therefore need to evaluate whether the proposed names of 'Dalkeith' and 'Purvis' would reflect Rangiora's local identity. The Board should therefore weigh up whether the names put forward by the public would:
 - (a) Tell the story of Waimakariri and reflect the district's natural and cultural heritage;
 - (b) Do not cause confusion with existing names in the Waimakariri District or neighbouring districts;
 - (c) Pay homage to the historical significance of particular locations;

- (d) Acknowledge the cultural significance of the area to Te Ngāi Tūāhuriri;
 - (e) Reflect local flora, fauna, and topographical features of the district.
- 4.4 If the Board agrees that the names do meet the abovementioned criteria, they would be added to the Pre-Approved Rangiora-Ashley Community Board's Road and Reserve Names List. However, if the Board believe that the motivation provided did not justify the inclusion of the names in the list, the members of the public would be advised accordingly.
- 4.5 It should be noted that the rights of a subdivision developer to promote preferred road names for the subdivision may be taken into consideration. However, the Community Boards will make the final decision regarding road names.
- 4.6 **Implications for Community Wellbeing**
The issues and options discussed in this report have no implications for community wellbeing.
- 4.7 The Management Team has reviewed this report.

5 **COMMUNITY VIEWS**

- 5.1 **Mana Whenua**
Te Ngāi Tūāhuriri hapū is not likely to be affected by or have an interest in the subject matter of this report.
- 5.2 **Groups and Organisations**
There are no groups or organisations likely to be affected by or to have an interest in the subject matter of this report.
- 5.3 **Wider Community**
The wider community is not likely to be affected by or to have an interest in the subject matter of this report. However, proposed names have local, historical or cultural significance to the area.

6 **OTHER IMPLICATIONS AND RISK MANAGEMENT**

- 6.1 **Financial Implications**
The decisions sought by this report have no financial implications. As per the policy, developers are responsible for the cost of road name signs.
- 6.2 **Sustainability and Climate Change Impacts**
The recommendations in this report do not have sustainability and/or climate change impacts.
- 6.3 **Risk Management**
There are no risks arising from the adoption/implementation of the recommendations in this report.
- 6.4 **Health and Safety**
No health and safety risks are arising from the adoption/implementation of the recommendations in this report.

7 **CONTEXT**

- 7.1 **Consistency with Policy**
This matter is not a matter of significance in terms of the Council's Significance and Engagement Policy.
- 7.2 **Authorising Legislation**
Local Government Act 1974 section 319 (1) (j).

7.3 Consistency with Community Outcomes

7.3.1 People are friendly and caring, creating a strong sense of community in our District.

7.3.2 People of different ages and cultures have wide-ranging opportunities to participate in community life and recreational activities.

7.3.3 The road naming guidelines contribute to maintaining the distinctive character of our towns, villages, and rural areas.

7.3.4 The careful selection of road names also contributes to the district being well served by emergency services”.

7.4 Authorising Delegations

The Rangiora-Ashley Community Board has been delegated the power, on behalf of the Council, to approve the naming of new roads and parks within its area.

Sent: Wednesday, 5 November 2025 2:48 PM

52

To: Com Board <Com.Board@wmk.govt.nz>

Subject: Rangiora West Development Street/Reserve names

Caution: [THIS EMAIL IS FROM AN EXTERNAL SOURCE] DO NOT CLICK links or attachments unless you recognise the sender e

Dear Community Board Members,

I understand I need to apply to have names for Streets/Reserves in respect of new developments.

My parent's land is about to be developed into residential sections by Ben Dormer, Cambridge Blue Developments Ltd.

Don and Hilda Corbett arrived in this District in 1959, leasing the Royal Hotel, Woodend.

In 1964 they purchased The Plough Hotel and embarked on decades of support for their community supporting and sponsoring many sports clubs, teams, educational and senior citizens groups, Rangiora St John Ambulance, Waikuku Surf Lifesaving Clubs rescue boat, Rangiora Fire Brigade, Westpac Helicopter Service and both McAlpine's Pipe Band and Rangiora Brass band, Plunkett and Rangiora Hospital.


Don and Hilda operated the Hotel for 47 years to a high standard earning great respect in the Hospitality Industry and Community.

In 1973 they bought this block of land (63 Oxford Road and 212 Johns Road) and continued to nurture it further developing their passion for horse racing, training and breeding.

It would be highly appropriate for naming as attached. Dalkeith Holdings Ltd was their Company.

Sincerely,

Cath Kennedy (nee Corbett)





The Club is pleased today to recognize the memory of
Don Corbett.

Don operated the Plough Hotel in Rangiora with his wife Hilda for 47 years and during that time was a strong supporter and sponsor of racing both in North Canterbury and at Riccarton Park. "The Plough" was a regular and valued partner as recently as the Grand National Carnival this season.

Don was also prominent within the hospitality industry being elected a Life Member of Hospitality New Zealand. His passion for the sport of racing extended to training and owning a number of horses often with the 'Dalkeith' name association. Dalkeith Lad was an early ownership success winning a White Robe Lodge Stakes at Wingatui.

He enjoyed considerable success with outsized dividends – Dalkeith won the 2yo at Timaru on June 8th 1984 paying \$64.60 and \$15.10. This was a special occasion as it was also Hilda's birthday.

Dalkeith Prince (5 wins) won at Riccarton Park in 1991 paying \$39.45 and \$7.30 – another big collect. Other winners included All Trebles (5 wins whom he purchased at the Trentham Sales), Battle Play, High Power, Actress, Activator, Dalkeith Belle, Highmarks etc.

Don passed away in October this year and is remembered here today by Hilda and three of his daughters, Cath (Philip), Helen and Barbara (Mike).



OneSchool
Global Rangiora



Client: Cambridge Blue Developments Ltd
Project No: Z5.075

Scale: NTS @ A3
Date: September 2023

Cambridge Estate
Rangiora



Disclaimer: This is a preliminary plan only and subject to change and requires consent

From: [REDACTED]
Sent: Monday, 12 January 2026 7:05 PM
To: Governance; [REDACTED]
Subject: Street names - Request for the Purvis family to be considered as a potential street name in Rangiora

Categories: Thea

Caution: [THIS EMAIL IS FROM AN EXTERNAL SOURCE] DO NOT CLICK links or attachments unless you recognise the sender email

Hi,

We are writing to request the Purvis name be added to the list of potential street names.

The Purvis family has been associated with Rangiora for a long time. The family has been associated with the Fernside area and owned farms in Oxford Road and Lehmans Road. With the town extending out in this direction it is appropriate for the Purvis name to be recognised as a street name. I have included some historical information below.

Robert Purvis married Kate McIntosh on 7 June 1897 in Rangiora and they lived at 83 Oxford Road, Rangiora. Robert and Kate had 7 children. One of the children was Bill Purvis my grandfather. Three of the children (Bill, Ken and Hector) saw active service in WWII. Hector was killed in action. All 3 brothers are recognised in the Fernside Community Hall.

The eldest son of Robert Purvis and Kate McIntosh was Robert McIntosh Purvis. He married Isobel Jean Purvis in 1936, and they owned a farm and lived at 255 Lehmans Road. The house they lived in is still standing. They had 6 children. One of whom Don Purvis is still living in Rangiora. Don Purvis is a retired builder and served with the local fire brigade for 25 years. Graeme Purvis (now deceased), another son of Robert and Isobel lived in Rangiora for most of his life and trained horses for harness racing.

If you require any other information, please let me know.

Kind regards

[REDACTED]

From: [REDACTED]
Sent: Monday, 12 January 2026 7:05 PM
To: Governance; [REDACTED]
Subject: Street names - Request for the Purvis family to be considered as a potential street name in Rangiora
Categories: Thea

Caution: [THIS EMAIL IS FROM AN EXTERNAL SOURCE] DO NOT CLICK links or attachments unless you recognise the sender email

Hi,

We are writing to request the Purvis name be added to the list of potential street names.

The Purvis family has been associated with Rangiora for a long time. The family has been associated with the Fernside area and owned farms in Oxford Road and Lehmans Road. With the town extending out in this direction it is appropriate for the Purvis name to be recognised as a street name. I have included some historical information below.

Robert Purvis married Kate McIntosh on 7 June 1897 in Rangiora and they lived at 83 Oxford Road, Rangiora. Robert and Kate had 7 children. One of the children was Bill Purvis my grandfather. Three of the children (Bill, Ken and Hector) saw active service in WWII. Hector was killed in action. All 3 brothers are recognised in the Fernside Community Hall.

The eldest son of Robert Purvis and Kate McIntosh was Robert McIntosh Purvis. He married Isobel Jean Purvis in 1936, and they owned a farm and lived at 255 Lehmans Road. The house they lived in is still standing. They had 6 children. One of whom Don Purvis is still living in Rangiora. Don Purvis is a retired builder and served with the local fire brigade for 25 years. Graeme Purvis (now deceased), another son of Robert and Isobel lived in Rangiora for most of his life and trained horses for harness racing.

If you require any other information, please let me know.

Kind regards

Pre-approved New Road Name Lists for Community Boards

Kaiapoi-Tuahiwi Community Board (KTCB)

Historic Names	Reference
Bastings	Local early business owner.
Begg	
Bevan Wright	Kaiapoi brass band stalwart.
Blackie	
Booker	Shop owner during the 50's and 60's.
Braun (Karel)	Still resident.
Brown (Kitt)	Local identity.
Brownlee (Arthur)	Family owned the Kaiaknui Hotel.
Brundell (Alfred)	Local farming family.
Bunker	Shop owner during the 50's and 60's.
Checketts	
Ching	Early settler family in Kaiapoi.
Dudding	Purchased George Jackson's punt.
Dudley (Dr Charles)	Town clerk and on the Kaiapoi Roads Board.
Eagleston	Early settler family in Kaiapoi.
Eckersley	First accountant in Kaiapoi and built a flax mill.
Endacott	Name returned to the list (19 September) as no longer required by Lime Developments Ltd.
Engelbrecht	Farmers to the north west of Coutts Island.
Fox [check]	Name returned to the list (19 September) as no longer required by Lime Developments Ltd.
Grimshaw	Local business family.
Hatchwell	Shop owner during the 50's and 60's.
Hayman (JA)	Councillor in 1906.
Hopkins	Brothers who were local wool and hide buyers and returned service men.
Hudson (Rev Lewis)	Methodist minister.
Jacob McGarry	Soldier honored for his participation in the Crimean War.
Joseph	
Karaitiana	To be considered as a future Reserve name.

Continued over page

Historic Names	Reference
Kennett	Local family live on Giles Road in the 50s and 60s.
Knighton	
Levey	
Lipscombe	Shop owner during the 50's and 60's.
McFellen	
McGregor	
Mealings	Long time local residents (5 generations) with members of the family working at the wollen mill and heavily involved in local sports.
Midgley	Shop owner and school teacher.
Midland	Midland bus company operated in the Kaiapoi area from WWII to the early 1980.
Ohapuku	Original name of area between end of Mill Road and Ohoka.
Pinkham	Local family.
Pollard (J)	Councillor in 1928.
Richards	The family have been in Kaiapoi for several generations and Mrs Moody's parents donated a South Island Rifle Championship medal plus six photographs relating to members of the family dating back to 1912.
Riseley	Name returned to the list (19 September) as no longer required y Lime Developments Ltd.
Thew	CR Thew was on the Council in 1950.
Vermeulen (Hans)	Keep New Zealand Beautiful.
Waverley	Name of farm on corner of Mill and Island Roads and home of Charles Morgan Williams MP and farmer.
Woolcott	Kaiapoi family of renown.
Wright (Bevan)	Kaiapoi brass band stalwart.
Redmond	Kaiapoi Borough Councillor in 1980-85 and KTCB member between 2019-19. Solicitor and partner in Corcoran French from 1981-2017. Life member of KPA Patron and life member of Coastguard North Canterbury and foundation chair of Kaiapoi Maritime Heritage Trust from 2005-2020. Awarded the Queens Service Medal for community service in 2019 and a WDC councillor.
Wheeler	Family lived and worked in Kaiapoi from the late 60s to the early 90s. Community involvement included membership of the rugby hockey and model aeroplane clubs working mens club and competing in the Kane Shield during the 1980s.

Historic Names	Reference
Ancall	Alfred Ancall was one of the first to see the 'magnificent bush and birds' as it was in 1856 and lived here for 63 years. Alfred Ancall carted timber from Oxford to Kaiapoi and Saltwater Creek as a lad of 14 years. He also managed Plaskett Mill and was also a butcher in the early days of Oxford.
Crowe	Thomas Crowe arrived in Oxford in 1860 and commenced dairy farming. Followed that occupation for 41 years until he was 80 years old.
Dell	Signed the Women's Suffrage Petition in Ohoka.
Ffitch	Henry Ffitch served on the Oxford Road Board for four years and as Chairman of the Kiri Kiri School Committee for 5 years.
Frahm	Is a name associated with the area for many years. A creek named Frahm's Creek, in the early 1860's, still runs through Rows property to Main Drain.
Gainsford	Mrs R H Gainsford was the first President on the Women's Christian Temperance Union which was formed on 11 September 1911. Robert Henry Gainsford was Clerk, Surveyor, and Treasurer of the Oxford Road Board, appointed in 1901.
Hitchcox	Signed the Women's Suffrage Petition in Ohoka.
Humphries	Signed the Women's Suffrage Petition in Ohoka.
Kenrick	Harry Kenrick was the first Chairman of Oxford Road Board. He started up a commercial sawmill with steam-driven saws. The first timber built house was Mr Kenricks.
Malland	Signed the Women's Suffrage Petition in Ohoka.
Mann	Mrs J Mann died in 1914 and was the first woman to arrive at the Oxford settlement in 1860. We still have Jeanette (Mann) Wells living in Oxford on the same block of land that her family owned many years ago.
McCormack	James McCormack was the treasurer and collector to the Waimakariri-Ashley Supply Board, joined the Board in 1895.
Pachnatz	F Pachnatz lived in Oxford and was a solder in 1896. He is also named in 'The Oxford – The First 100 years' as a Platelayer. Marcia Patchnatz gave many hours of service to the library in Oxford from 1947-1949 and again from 1957-1991.
Rees	Mr Howard Rees came to Oxford about 1860, built his house and surgery and dispensary on Main Street, West Oxford. Was Registrar of Births, Marriages and Deaths for Oxford in 1867.
Sides	Signed the Women's Suffrage Petition in Ohoka.
Skurr	Janice Skurr was Mayor of Waimakariri District Council from 1942-1946.
Stevenson	Rev N.J Stevenson first produced The Bulletin from 1995-2001.
Stopps	Agnes Stopps Formed the Ohoka Women's Institute.
Walls	Collin Atholwood Stewart Walls, [1902-1992] purchased land and a bakehouse on Mill Road Ohoka in 1923, when he was 21 years of age. From there he baked bread and did some deliveries with is motorcycle and side car. In 1927 he built a new brick bakehouse which still stands today. Many of Colin's descendants still live in Ohoka and the wider North Canterbury area.
Volkman	Surgeon-Sergeant.
Zimmerman	Mr and Mrs Zimmerman, produced The Bulletin from 1946 to 1960.

Historic Names	Reference
Borrell	(Full name Win Borrell).
Breach	Early farmers in south Rangiora.
Duffell	Family had owned land in various parts of the District from 1850 and had a long association with Rangiora.
Gilsenan	Gilsenan family resided in the northern West Belt area.
Horoeka	Native plant (Lancewood).
Hunnibell	Early local bootmaker.
James Seed	Ran flax mill and general store in Southbrook and was the local ropemaker.
Kahikatea	Native plant that grows in district (White Pine).
Koromiko	Native plant that grows in district (Hebe).
Laird	Coalman.
Lane (Frederick)	Mayor in 1921.
Langley (Doris)	Business women who ran a well known dairy and had many years service to photographic and early records societies.
Les Farr	Mayor 1961-1971.
Loffhagen	Long time residents of the Ward.
Pulley	Resident request.
Phyllis Hollow	Senior Mistress of RHS when Nursery school established in 1938.
Relph	Mayor 1905-08.
Robinson	Early settler and son was a builder of several early High Street buildings.
Sansom	Rangiora Borough Councillor from 1888-1914 and Mayor three times (1892-94, 1901-2 and 1912-14).
Schluter	Local farming family who gifted Hagen Reserve.
Skurr	Janice A Skurr had a long standing involvement in North Canterbury local body politics, serving both the Oxford County Council, and after reorganisation, the Waimakariri District Council, a total of 21 years. As Deputy Mayor in 1995, she took over the Mayoral duties when Trevor Inch resigned. She won the following two terms until defeated by Jim Gerard in 2001.
Sheehan	Returned Service Association involvement.
Skilling	Early local blacksmith and later engineers.

Historic Names	Reference
Betty Wright	Farming family in Ravenswood.
Brockenhurst	Farm where Ravenswood is located (name to be used in conjunction with development on Pegasus side of SH1 where farm was situated).
Catton (Eleanor)	Novelist.
Cooper (Anton)	Top New Zealand Cyclist.
Corlett (Alfred)	Early settler in Woodend.
Crawford	Serviceman from the WWII.
Curnick	Serviceman from the 1914 war.
Dearbridge	Charles Dearbridge born in Herefordshire in England and farmed property in Woodend. - Sounds similar to Derbridge.
Dellow (Rev John)	Methodist minister at Woodend.
Drake	Serviceman from the WWII.
Ealgeson	Serviceman from the WWII.
Field	Serviceman from the WWII.
Frame (Janet Paterson)	Author.
Graham	Serviceman from the WWII.
Gregg	Serviceman from the WWII.
Haslam (Rev JF)	Methodist minister at Woodend.
Hayman	Serviceman from the 1914 war.
Herridge	Fred Herridge Farmer and Clergyman.
Hulme (Keri-Ann Ruhi)	Novelist and Poet.
Joughin (Rev Thomas Alfred)	Wesleyan Methodist minister.
Kotua (Rau)	An early resident of Woodend.
Lacebark	Native plant.
Lancewood	Native plant.
Lemonwood	Native plant.
Leunens (Christine)	Novelist.
Lovegrove	Woodend family.
Mahy (Margaret)	Author of Children's and Young Adult books.
Mander (Jane)	Novelist.
McConachey	Serviceman from the WWII.
McMillan	Catherine McMillan - Postmistress for Saltwater Creek settlement.
Morriss	Serviceman from the 1914 war.
Parker	Serviceman from the WWII.
Pateman	Edward C Pateman - Farmer of Beaconsfield Farm, Woodend.
Platt	Serviceman from the WWII.
Ribbonwood	Native plant.

Historic Names	Reference
Robertshaw	Serviceman from the WWII.
Rudd	Serviceman from the WWII.
Sills (Robert)	Contractor in Woodend.
Standage (Rev CH)	Methodist minister.
Walsh (Dame Frances Rosemary)	Screenwriter and Film Producer.
Whiteywood	
Witte (Bernard P H)	Brickmaker at Woodend.

WAIMAKARIRI DISTRICT COUNCIL**MEMO**

FILE NO AND TRIM NO: POL-08-78 / 260105000830

DATE: 11 February 2026

MEMO TO: Rangiora-Ashley Community Board

FROM: Nadeesha Thenuwara, Policy Analyst
Billy Charlton, Environmental Services Manager

SUBJECT: Options for Managing Cats in Waimakariri

Purpose: This memo has been prepared in response to the request made by the Rangiora-Ashley Community Board regarding options available to the Council for managing cats in Waimakariri.

Background:

- In New Zealand, cats are categorised based on their relationship with humans as companion cats, feral cats and stray cats, and the authority responsible for managing related issues varies accordingly, as explained below:

Local councils have legal authority to address issues related to companion cats under the Local Government Act 2002 (LGA 2002) and Health Act 1956.

The Ministry for Primary Industries and the Society for the Prevention of Cruelty to Animals are responsible for managing cat welfare issues.

The Department of Conservation (DOC) is responsible for managing feral cats on public conservation lands to protect native wildlife, as feral cats are considered pests in these areas under national legislation.

At present, the definition of stray cats is unclear in national legislation, and they are not classified as pests. Therefore, DOC does not hold responsibility for managing stray cats, resulting in a gap in accountability.

- Strategy and Business Unit (SBU) conducted a feasibility assessment in 2024 to determine the scale of issues related to domestic animals in Waimakariri, including cats, and to identify options for managing them.
- According to the Council's customer complaints database, 17 cat-related complaints and inquiries were received between 2018 and December 2025. While this quantitative data suggests the issue is minor, qualitative feedback from stakeholders (e.g., Kitty Kingdom, Ashley-Rakahuri Rivercare Group) during the feasibility study indicates cats significantly impact district biodiversity by preying on native bird species.
- The feasibility study found that available information is insufficient to understand the scale and scope of cat related issues in the district. Additional data and community input are needed to make informed decisions on managing these issues.

- A Council workshop and community board workshops were held in 2024 to present the results of the feasibility study. The overall outcome of the community board consultation was that 50% of boards (Rangiora-Ashley Community Board and Oxford-Ohoka Community Board) supported proceeding with pre-consultation and identifying needs for an Animal Control Bylaw. Those opposed (Woodend-Sefton Community Board and Kaiapoi-Tuahiwi Community Board) considered domestic animal issues including those related to cats as not significant in Waimakariri.
- This project was paused in 2025 due to capacity and priorities with existing Council bylaws, however, feasibility studies for potential bylaws, including animal control, will be progressed this year.

Options available for managing cat issues:

1. Use of non-regulatory tools: The Council can maintain a dedicated section on its website to raise awareness and encourage community cooperation for responsible cat ownership.

Example: Auckland Council's guidelines for cat ownership and welfare

2. Regulatory tools/Cat management bylaws

Policies commonly included in bylaws to manage issues and nuisances caused by cats in New Zealand include:

a) Mandatory desexing for cats not kept for breeding purposes

Examples: Palmerston North City Council, New Plymouth District Council, Whanganui District Council, Whangārei District Council, Ruapehu District Council.

b) Limits on the number of cats per household

Example: Carterton District Council – Written approval from an Authorised Officer is required to keep more than three cats aged three months or older on any property in an urban area for a period exceeding 14 days.

Example: Marlborough District Council – No person may keep more than four cats over the age of three months on any land without prior written permission from the Council.

c) Mandatory or voluntary microchipping and registration of cats on the New Zealand Companion Animal Register or a nationally recognised cat breeders' body

Examples: Wellington City Council (mandatory microchipping), Whanganui District Council.

d) Restrictions on feeding feral cats

e) Guidelines for managing stray cats and providing cat trap services

Example: Wairoa District Council provides cat trap services for managing stray cats.

The Council has the following limitations in progressing a cat bylaw:

- At present, there is no national legislation specifically regulating cats, which limits the ability of local authorities to develop and enforce cat-related bylaws. The Local Government Act 2002 and the Health Act 1956 do not provide for infringement notices or fines for breaches of animal control bylaws unless there is a court conviction against the person committing the offence.
- In addition, the Council has limited data and information on local cat-related issues, as outlined below:

- What issues people encounter and how they perceive them. For example, do they view issues related to cats as “issues” or just as “things that can be neglected because animals are animals”.
- The frequency and scale of the issue (e.g., how many people encounter issues related to cats and how frequently they occur).
- The geographic distribution of the issue (e.g., whether the issue is concentrated in rural or urban areas).
- What the community expects from the Council.
- What options are currently active at the community level to deal with cat issues.

The Strategy and Business Unit and the Environmental Services Unit discussed these limitations with all Community Boards and with the Council, as outlined in the background section.

WAIMAKARIRI DISTRICT COUNCIL**MEMO**

FILE NO AND TRIM NO: DRA-20-50-03 / 251222244272

DATE OF MEETING: 11 February 2026

MEMO TO: Rangiora Ashley Community Board

FROM: Don Young, Senior Engineering Advisor
Jason Recker, Stormwater and Waterways Manager

SUBJECT: For Information - Pheonix Palm Tree at 2 Edward Street

1. Background

- 1.1. In the workshop held at the 10 December 2025 RACB Meeting titled “Significant Upcoming Projects in Rangiora”, it was discussed that as part of the Blackett Street Stormwater Upgrade project, the project engineers felt it prudent to remove the large Pheonix Palm tree at the Ashley Street Roundabout adjacent to 2 Edward Street, to facilitate the works. This was because the proximity and depth of the proposed works.
- 1.2. The RACB seemed generally to understand the rationale for this outcome, with two specific questions raised for follow up.
 - 1.2.1. Could there be opportunity to remove and relocate the tree elsewhere?
 - 1.2.2. What would be planted in its place at the site?
- 1.3. To answer the first question, a known local arborist, Asplundh was approached for their thoughts. They advised that there would be considerable cost involved in relocation due to the size of the tree, and that there would be a large risk it would not survive. It would be considered much more economical to plant one or several smaller trees elsewhere instead.
- 1.4. For the second question the WDC Greenspace Team were approached for comment. They advised that as the tree is listed in good condition and is considered a landmark tree which enhances the landscape, a significant consultation process should be followed, involving the local business community and nearby residents.
- 1.5. They also responded that should it be removed, it would be preferable to extend the existing small annual bedding garden which currently exists around the tree. This would also be suitable to the project & operations teams as it would eliminate the risk of root interaction with pipework should larger trees be planted.
- 1.6. The above notwithstanding, the Greenspace team had no objection to the tree being removed should the consultation process support that outcome.
- 1.7. Given the amount of effort required to proceed with the removal, the project team have reviewed the design for the proposed works, and Asplundh have provided a Tree Protection Plan, should works proceed with the tree remaining in place. This has shown that with the preferred design, and several protection measures put in place, the risk of damage to the tree can be reduced to an acceptable level.

2. Outcome

- 2.1. Considering the above, PDU and the Water Services Unit are in agreement that the tree should be retained with appropriate tree protection measures in place, and no further action on removing the tree will take place.
- 2.2. We wish to note that there is a residual risk the root structure of the tree may be damaged as such that it may die in subsequent years. However, this risk is considered low.

RANGIORA-ASHLEY COMMUNITY BOARD

CHAIRPERSON'S REPORT FOR DECEMBER 2025/JANUARY 2026

COMMUNITY INTERACTION	ISSUES RAISED	ACTION SUGGESTED
<i>i.e, Events, meetings, e-mails</i>	<i>i.e, Community Feedback and Concerns</i>	<i>i.e, Call for report, refer to Council, Service Request</i>
Individually met with Board Members	Discussed goals, Board basics and committee appointments.	Ongoing
Met with Rotary Members	Discussed ongoing support for Food Forest	Meet in the new year to form a plan for 2026
Food Forest Working Bee	Met with a very small team and tidied up the Food Forest	
Rangiora Santa Parade and Party in the Park		
RACB Agenda Meeting		
RACB Christmas Evening		
Met with Chrissy Taylor-Claude and Cr Brent Cairns	Met onsite at Food Forest to discuss the Waters Team's concerns	Pushed back to the Waters Team to relocate some trees in Winter with their own manpower and funding, and to replace any trees that perish out of their budget.
Online Zoom	Rates Capping with DIA.	
Assisted Gary McNicholl	Helped the Southern Community Hub with local school contacts.	
Food Forest Working Bee	Tidied up the Food Forest.	
Food Secure North Canterbury	Applied and was successful for the Rangiora Food Forest to be part of the 2026 Grow and Tell showcase.	Will showcase our Food Forest project to community members in a self-guided trail in mid-March
Phone call from a local resident	Asked about the possibility of connecting with WDC to discuss night safety at the back of her property/neighbouring reserve.	Asked her to Snap, Send, and Solve her photos and concerns, and to cc me on the email. She is away for a month shortly, so I will do it when she returns from overseas.

* *The purpose of the Chairperson's report is to provide a short update to Board members in relation to activities/meetings that you have attended or to provide general Board-related information.*

RANGIORA-ASHLEY COMMUNITY BOARD

MEMBERS INFORMATION EXCHANGE FOR NOVEMBER 2025

Member's Name: Diana Hawkins

COMMUNITY INTERACTION	ISSUES RAISED	ACTION SUGGESTED
<i>i.e, Events, meetings, e-mails</i>	<i>i.e, Community Feedback and Concerns</i>	<i>i.e, Call for report, refer to Council, Service Request</i>
January 2026 – John Madeley conversations	<p>The odour issue associated with the Canterbury Landscapes Supplies site just north of the Waimakariri River, Swannanoa, and CLS's application for a 30-year consent, despite not meeting their current consent conditions.</p> <p>Ecan is not policing the conditions and is not even meeting its participation requirements under the consent conditions it set. i.e., community liaison meetings quarterly.</p>	<p>I suggested they talk to their local Councillors and the Oxford-Ohoka Community Board.</p> <p>Assisting J Madeley and other affected parties to attend the Oxford-Ohoka Community Board meeting on 4 February 2026, so they could present their case.</p>
Late Dec and early Jan Alan and staff, and other locals conversations	<p>The abysmal road sealing job on Loburn Whiterock Road, at the bend between Te Whare and the domain.</p> <p>The accidents include at least four since mid-December 2025: one involving an ambulance and a cyclist, and one that knocked out power when they hit a power pole (mid-January 2026). Two others just hit the trees/hedging.</p>	<p>Suggested that the Service Requests to Council be resent.</p> <p>The road has now been resealed. (29/1/26)</p>
Alan and Petra My tanker driving staff	A willow tree is obscuring the road as you drive up towards a hilltop, coming north from Oxford to Loburn. The tree forces vehicles into the right-hand lane, which could lead to a head-on collision because traffic coming south cannot see you.	<p>Suggested a service request be sent to Council</p> <p>Has been inspected but not dealt with yet</p>
ARRG, RACB emails	Cat management/animal bylaw	Discuss at the next RACB meeting
Emails and conversations with Council staff and Mayor Gordon Dec/Jan	Discussions about the Ashley Water Scheme administered by the Hurunui District Council	Meeting to be held on 12 February at the Council with Mayor Gordon, Councillor T Fulton, me, and Council staff

Member's Name: Bruce McLaren

COMMUNITY INTERACTION	ISSUES RAISED	ACTION SUGGESTED
<i>i.e, Events, meetings, e-mails</i>	<i>i.e, Community Feedback and Concerns</i>	<i>i.e, Call for report, refer to Council, Service Request</i>
<i>Note: My Councillor meetings, workshops, committee meetings and public engagements are recorded separately.</i>		
Kippenberger Stock Underpass decommissioning	Many people didn't know it existed. Some in the community thought it should have been repurposed for pedestrian use. However, they appeared to understand the expensive engineering challenges that would present (waterproofing and being too low for cyclists)	No action required. Staff held a workshop with RACB prior to tendering. The work was completed neatly and professionally. The area is now just grass and the start of a footpath to nowhere.
Toot For Tucker	Annual event to restock NC Food Banks.	No action required.
Christmas & EOY Events <ul style="list-style-type: none"> Community Wellbeing NC breakfast Kaiapoi Santa Parade & Market Rangiora Santa Parade & Market Oxford Santa Parade & Market Soroptimist Christmas Tree Festival John Knox Christmas trees NC Sports morning tea 	Every public event saw huge crowds of happy, smiling people, celebrating the end of 2025 and the festive season.	RACB members and their partners are invited to join the parades along with the Mayor and Councillors, and it is a good way for the community that supports us to see us all together in person.
St John Church Market	Always well-attended and held on the first Saturday of every month, raising funds for the community.	Bring your friends and family to the next market on Saturday, 7 March.
North Canterbury Neighbourhood Support monthly meeting	I am the RACB appointee to the NCNS Committee.	I understand NCNS will approach the Community Boards in Q4 to seek new appointees.
Citizenship Ceremony	A significant day for our newest New Zealanders as the Mayor took their Oath of Allegiance.	RACB members can attend future ceremonies. The Governance team can send a calendar invite for those.
AVIVA new office meeting	Supporting survivors of family violence for decades, they have moved to new premises in Christchurch and still retain their Rangiora office.	No action required.
Rangiora Croquet Club 120 th Anniversary	The club is still going strong and grateful for the support of RACB at their Milton Reserve location.	No action required.