

WAIMAKARIRI DISTRICT COUNCIL
HISTORIC HERITAGE ITEM RECORD FORM

2021 District Plan Item No. HH110
HERITAGE ITEM NAME former Fernside Railway Station grain store/goods shed, stockyards & loading bank
ADDRESS 354 Oxford Road, Fernside

PHOTOGRAPH



(www)

DISTRICT PLAN ITEM NO. n / a10 **HNZ LIST NO. & CATEGORY** n / a
(at time of assessment)

LEGAL DESCRIPTION Part Lot 1 DP 65842

VALUATION NUMBER 2159103901

DATE OF CONSTRUCTION 1874 (grain store) & 1895 (loading bank and stockyards)

**ARCHITECT/DESIGNER/
BUILDER** NZ Railways Department / Public Works Office

STYLE Industrial vernacular

PHYSICAL DESCRIPTION

Single-storey building with square footprint and gabled roof. Large loading bay doors beneath gable ends (east & west elevations). Loading bank, running on an east-west axis, and stock pens with rectangular footprint are immediately west of the storage shed.

MATERIALS/STRUCTURE

Timber framing and corrugated iron cladding (shed). Concrete and earth (loading bank). Pipe railing (stockyards).

ADDITIONS/ALTERATIONS

Railway line removed (post-1959). Installation of railway station style locality sign (c.2001).

SETTING

The former railway station site is located on the north side of Oxford Road (SH 72), west of its intersection with Swannanoa Road and Mount Thomas Road. The former grain store is situated on the southern (road) boundary, with the stockyards and loading bank immediately to its west. The extent of setting is limited to the immediate surrounds of the former railway structures, notwithstanding the potential archaeological values of the land parcel as a whole.

HISTORY

The Rangiora to Oxford branch line opened as far as Cust on 7 December 1874; the flag station at Fernside having opened on 1 December of the same year. The first passenger train to travel the line all the way from Rangiora to Oxford ran on 14 June 1875. A stationmaster lived near the Fernside station until early 1880, after which it appears the station was unmanned. In November 1895 it was reported that 'facilities for loading sheep and cattle at the Fernside Station' had recently been provided. The station was often used as a landmark in sales advertisements for local farms and residential property and at the turn of the 20th century the flag station, nearby school and a store from which the post office operated were the principal buildings serving a population of 550 people. The station closed to passengers on 9 February 1931 and closed entirely on 19 April 1959; the line has since been removed. In 2001 the Waimakariri District Council reinstated the locality sign in front of the former grain store, as part of a programme to mark the Rangiora-Oxford branch line.

HISTORICAL AND SOCIAL SIGNIFICANCE

The former Fernside Railway Station grain store/goods shed, stockyards & loading bank have historical significance for their association with the Rangiora and Oxford branch railway line and, more generally, the development of Canterbury's railways infrastructure since the early 1870s. The shed may be one of the oldest railway buildings remaining on its original site in New Zealand and dates from the Vogel era of railway construction in New Zealand.

CULTURAL AND SPIRITUAL SIGNIFICANCE

The former Fernside Railway Station grain store/goods shed, stockyards & loading bank have cultural value as a demonstration of the way of life of past station staff and patrons on the Rangiora-Oxford branch line.

ARCHITECTURAL AND AESTHETIC SIGNIFICANCE

The former Fernside Railway Station grain store/goods shed, stockyards & loading bank have architectural value as industrial vernacular structures designed to be fit for purpose and conforming to the standard models devised by the NZ Railways Department. The grain store/storage shed is an example of the five major historic railway building types, the others being station buildings, signal boxes, engine sheds and railway houses.

TECHNOLOGICAL AND CRAFTSMANSHIP SIGNIFICANCE

The former Fernside Railway Station grain store/goods shed, stockyards & loading bank have technological and craftsmanship value for their Victorian construction methods and materials. EG Wright and Joseph Taylor were the contractors for the Rangiora-Oxford railway. The builder of the stockyards is unknown at this time.

CONTEXTUAL SIGNIFICANCE

The former Fernside Railway Station grain store/goods shed, stockyards & loading bank have contextual significance as an inter-related group of historic features on the Rangiora-Oxford road and for their relationship with the same railway structures that survive at Springbank. The former station site is directly opposite the Fernside Memorial Hall and Community Centre (1954) and, together with the Fernside School, these buildings constitute the historic centre of the rural village. The station is also associated with 'Fernside House' on Mount Thomas Road (H099, c.1866 +), as it was the collection point for pupils attending Anne Mannering's 'Ladies' School' in the mid-1870s and early 1880s.

ARCHAEOLOGICAL AND SCIENTIFIC SIGNIFICANCE

As the structures pre-date 1900 their site has potential archaeological significance relating to the 19th century development of the station precinct.

SUMMARY OF HERITAGE SIGNIFICANCE

The former Fernside Railway Station grain store/goods shed, stockyards & loading bank have overall heritage significance to Fernside and to Waimakariri district as a whole. The structures have historical and social significance for their association with the development of the Rangiora-Oxford branch railway line and cultural value for their association with the way of life of the station's early staff and users. The former Fernside Railway Station grain store/goods shed, stockyards & loading bank have architectural value as Vogel-era industrial vernacular structures and technological and craftsmanship value for the methods and materials used in their construction. The former Fernside Railway Station grain store/goods shed, stockyards & loading bank have contextual significance as a group of historic features on the Oxford-Rangiora road and their site has potential archaeological significance in view of its development since the mid-1870s.

HERITAGE CATEGORY

B

REFERENCES

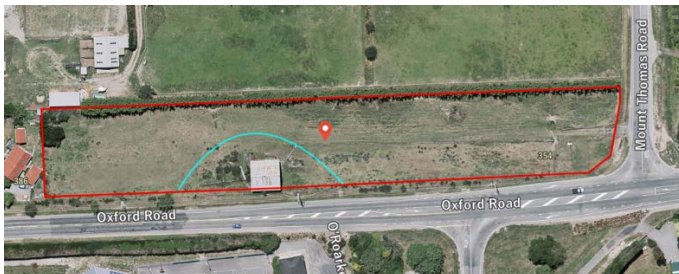
- *Press* 27 May 1873, p. 1; 15 May 1874, p. 3; 24 June 1874, p. 2; 2 December 1874, p. 4; 21 January 1875, p. 4; 4 May 1877, p. 4; 18 February 1880, p. 3; 28 September 1881, p. 3.
- *Globe* 2 December 1874, p. 2; 15 January 1875, p. 2; 22 June 1875, p. 4.
- *Star* 14 November 1895, p. 3.
- *Cyclopedia of New Zealand - Canterbury Provincial District* Christchurch, 1903 (available online).
- <https://teara.govt.nz/en/biographies/2t49/troup-george-alexander>
- <http://nzrailwaysrollingstocklists.weebly.com/stations.html>
- http://www.railheritage.org.nz/assets/dates_and_names.pdf
- <http://www.railheritage.org.nz/Register/Category.aspx?c=9>
- <http://www.heritage.org.nz/the-list/details/5218>
- <https://libraries.waimakariri.govt.nz/heritage/local-history/places-of-the-waimakariri/oxford-and-districts/history-of-the-oxford-rangiora-sheffield-railway-line>
- Archives New Zealand.

REPORT COMPLETED

25 July 2019

AUTHOR

Dr Ann McEwan / Heritage Consultancy Services



Extent of setting, limited to immediate setting of former Fernside Railway Station, 354 Oxford Road, Fernside.



Aerial view of above, 1965-69. WDC.