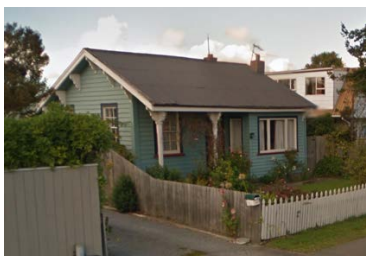


**WAIMAKARIRI DISTRICT COUNCIL
HISTORIC HERITAGE ITEM RECORD FORM**

2021 District Plan Item No. HH116
HERITAGE ITEM NAME former Rangiora Post & Telegraph Office
ADDRESS 132A King Street, Rangiora

PHOTOGRAPH



(www)

DISTRICT PLAN ITEM NO. n / a **HNZ LIST NO. & CATEGORY** n / a
(at time of assessment)

LEGAL DESCRIPTION Lot 1 DP 80919

VALUATION NUMBER 2165400900

DATE OF CONSTRUCTION 1873

**ARCHITECT/DESIGNER/
BUILDER** WH Clayton, Colonial Architect

STYLE Colonial Italianate

PHYSICAL DESCRIPTION

Small, single-storey dwelling with rectangular footprint and gabled roof. Lean-to at rear. Roof extends to form west-facing veranda that has been partially enclosed. Multi-pane double hung sash and casement windows. Ornamental brackets at top of veranda posts and under eaves at gable ends.

MATERIALS/STRUCTURE

Timber framing and weatherboard cladding, corrugated metal roofing.

ADDITIONS/ALTERATIONS

Relocated from High Street (pre-1941). Veranda partially enclosed (date unknown). Lean-to rebuilt (1950s). Section subdivided (1999).

SETTING

The building stands on the east side of King Street, in the block bounded by Queen Street in the north and George Street in the south. The cottage stands near the road frontage on a subdivided site and is visible from the public domain behind a low picket fence. The extent of scheduling is the land parcel on which the cottage is located.

HISTORY

Rangiora's first purpose-built post office to be erected in High Street in the latter part of 1873. George Buckham was the first postmaster in Rangiora and he held the post until his retirement in 1892. A new post & telegraph office was erected to the east of the 1873 building, on the corner of High and Percival Streets, in 1887. The third post office was erected on the same corner site in 1935-36, the second having been demolished to make way for the new building. It would appear that the 1873 post office may have been removed to King Street at around the same time, it was certainly in situ on its present site by the start of 1941. The building has been in residential use ever since.

HISTORICAL AND SOCIAL SIGNIFICANCE

The former Rangiora Post & Telegraph Office has historical significance for its association with the development of governmental facilities and infrastructure in Rangiora and, more generally, the colonial development of the town.

CULTURAL AND SPIRITUAL SIGNIFICANCE

The former Rangiora Post & Telegraph Office has cultural value for the esteem in which it is held as one of Rangiora's historic buildings.

ARCHITECTURAL AND AESTHETIC SIGNIFICANCE

The former Rangiora Post & Telegraph Office has architectural significance as the work of William Henry Clayton, the Colonial Architect of New Zealand between 1869 and 1877. Clayton's small-scale government buildings erected in provincial settlements typically had a rectangular footprint with a low-pitched gable roof extended to form a veranda. Decorative timber brackets were the sole ornamental feature. Clayton (1823-77) had been born in Tasmania and emigrated to New Zealand in 1863, having already established his architectural career in Launceston. After six years in private practice in Dunedin, he was New Zealand's first and only Colonial Architect. Clayton set the pattern for the government architects who came after him by developing standard plans for government buildings, including post offices and courthouses. He designed at least 80 post offices during his term and is best known for the former Government Buildings in Wellington (completed 1876).

TECHNOLOGICAL AND CRAFTSMANSHIP SIGNIFICANCE

former Rangiora Post & Telegraph Office has technological and craftsmanship value for the evidence it provides of mid-Victorian building materials and methods. The builder of the post office is currently unknown.

CONTEXTUAL SIGNIFICANCE

former Rangiora Post & Telegraph Office has contextual significance for the contribution it makes to the historic character of King Street and for its relationship with the 1935-36 former Post Office at the corner of High and Percival Streets.

ARCHAEOLOGICAL AND SCIENTIFIC SIGNIFICANCE

Although the building pre-dates 1900 its site may have limited potential archaeological significance in view of the relocation of the building in the mid-20th century.

SUMMARY OF HERITAGE SIGNIFICANCE

The former Rangiora Post & Telegraph Office has overall significance to Rangiora and the Waimakariri district as a whole. The building has historical and social significance for its association with governmental development of colonial Rangiora, and cultural value for the esteem in which it is held as a local historic building. The former Rangiora Post & Telegraph

Office has architectural significance as a small-scale post office built to the design of Colonial Architect WH Clayton and technological and craftsmanship value for its mid-Victorian construction methods and materials. The former Rangiora Post & Telegraph Office has contextual significance for the contribution it makes to the historic character of King Street; its site likely has limited archaeological value in view of the dwelling's relocation.

HERITAGE CATEGORY

B

REFERENCES

- *Press* 2 May 1873, p. 2; 7 May 1873, p. 4; 4 November 1873, p. 4; 29 December 1892, p. 5; 24 April 1935, p. 4; 26 September 1935, p. 16; 28 February 1941, p. 14.
- *Globe* 3 April 1882, p. 3.
- *Star* 11 July 1873, p. 2; 6 April 1887, p. 3; 1 March 1892, p. 3.
- *Timaru Herald* 15 September 1892, p. 3.
- Archives New Zealand.
- DN Hawkins *Rangiora: the passing years and people in a Canterbury country town* Rangiora, 1993; available online.
- <https://landmarks.waimakariri.govt.nz/rangiora-heritage/rangiora-post-office>
- <https://teara.govt.nz/en/biographies/2c20/clayton-william-henry>
- *Appendix to the Journals of the House of Representatives* 1874 Post Office Department report; available online.
- P Richardson 'Building the Dominion: Government Architecture in New Zealand, 1840-1922' PhD thesis, University of Canterbury, Christchurch, 1997 (available online).

REPORT COMPLETED

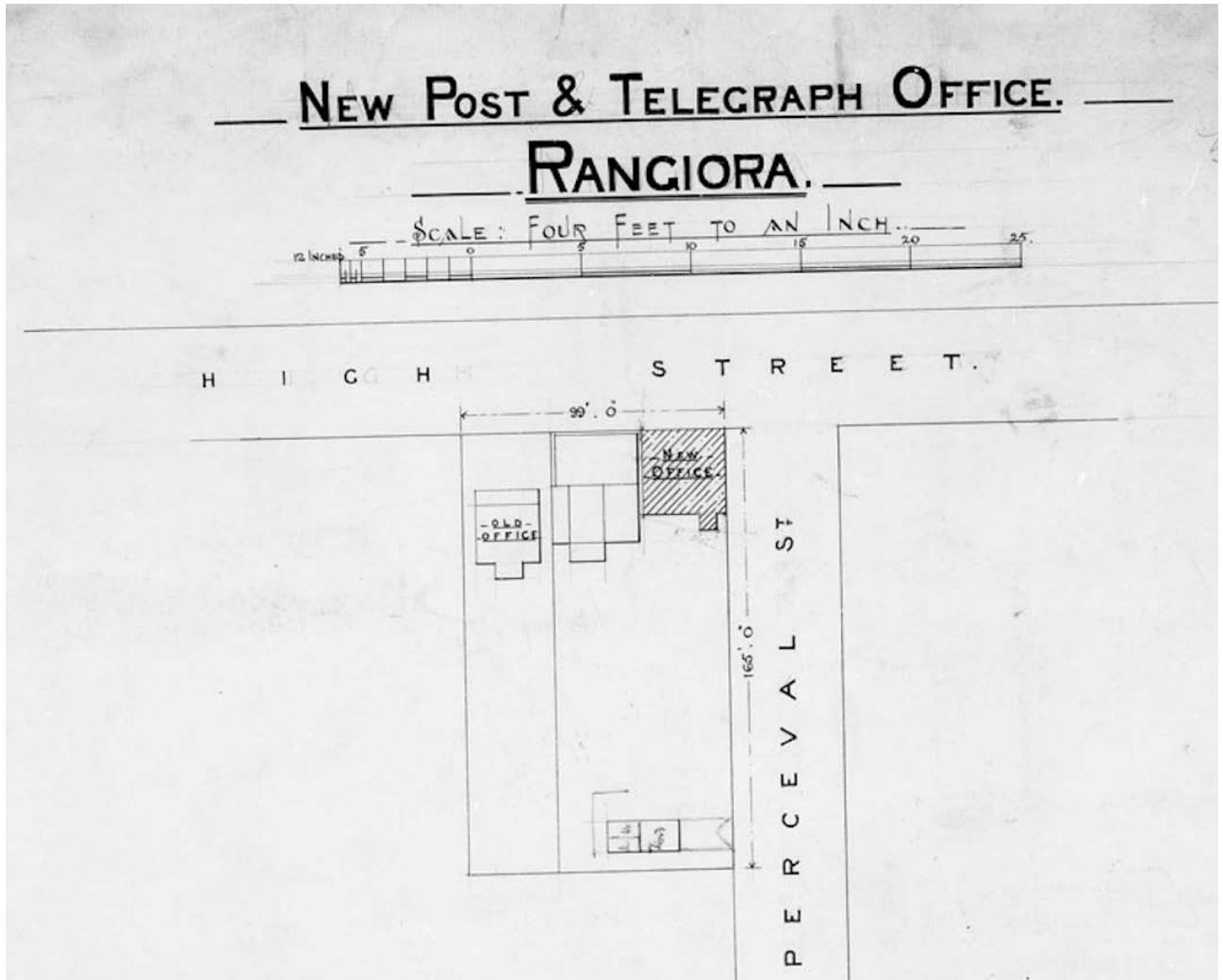
31 July 2019

AUTHOR

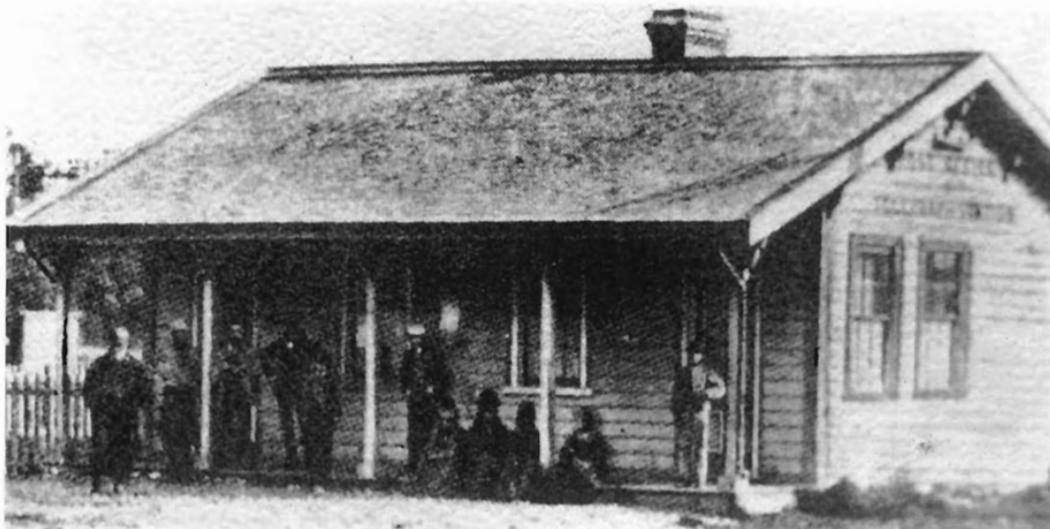
Dr Ann McEwan / Heritage Consultancy Services



Extent of scheduling, former Rangiora Post & Telegraph Office, 132A King Street, Rangiora.



Detail from 1887 architectural drawing showing 1873 post office to the west (left) of the new 1887 building at the corner of High and Percival Streets, Rangiora. Archives New Zealand.



71. W. H. Clayton, Palmerston North Post Office (1874-5).

Contemporary post office design by WH Clayton showing gabled form and decorative brackets. Richardson thesis, plate 71.