

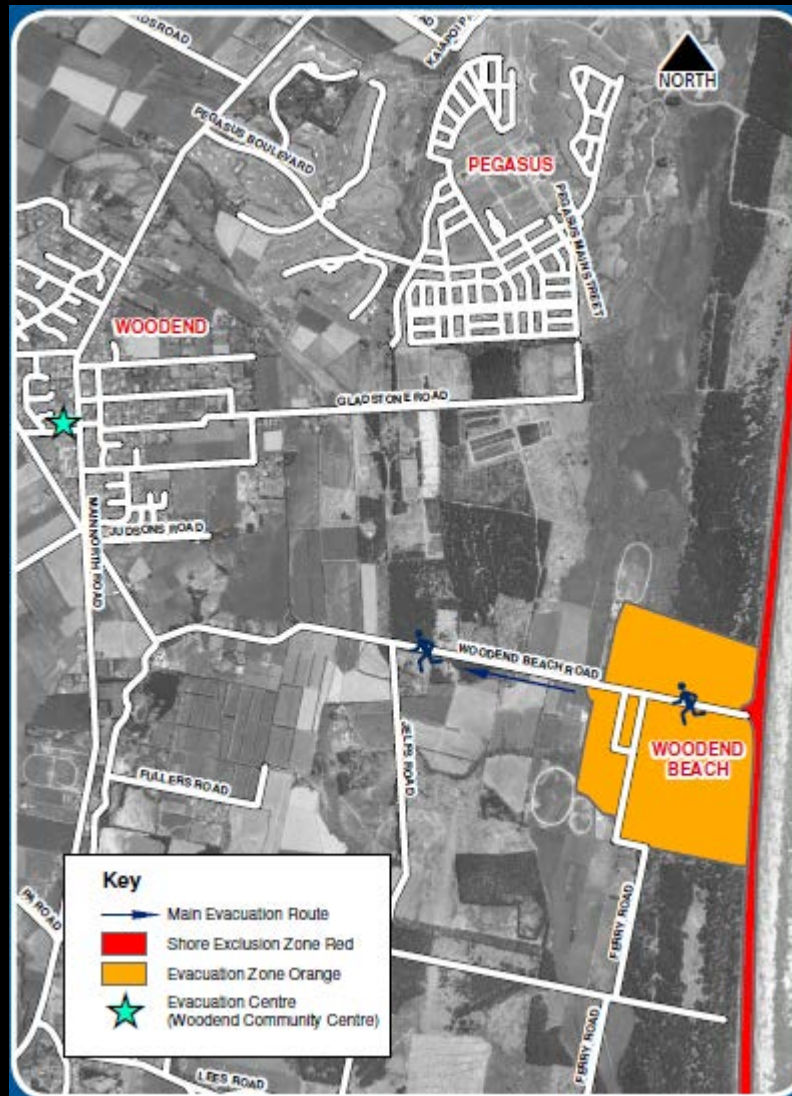
# WOODEND BEACH TSUNAMI PLAN

## TYPES OF TSUNAMI

- **Near Source:** Locally generated (epi-centre in the sea and approx magnitude 7 or greater) with no warning time. Low risk for Canterbury.
- **Regional Source:** Within 3 - 8 hours of our shores. A possible risk Canterbury.
- **Distant Source:** Approx 12 – 17 hours and the most likely risk for Canterbury.

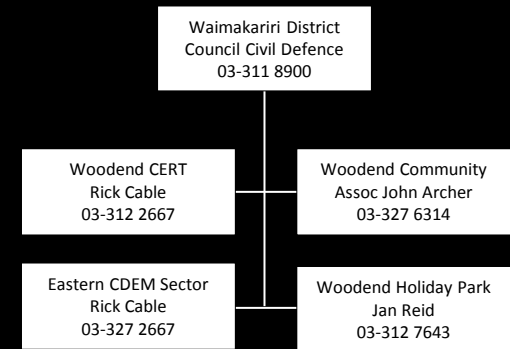
## OFFICIAL WARNINGS

- Ministry of Civil Defence via TV & radio.
- Regional civil defence via radio.
- Local council via 104.9 Compass FM radio, emergency services vehicles & sirens, door-to-door knocking, social media and [www.waimakariri.govt.nz](http://www.waimakariri.govt.nz).
- Probably no warning time for a “near source” tsunami.



## LOCAL CONTACT TREES

- Tell your neighbours and visitors.
- Check on vulnerable residents.



## EVACUATE

- If you are worried.
- If civil defence or emergency services say so.
- Take pets, medicines and important documents (Wills, insurance policies).
- Water, power and gas off.
- Leave Yellow Pages in front window as you go.
- Lock up.
- Evacuation Centre at Woodend Community Centre at 6A School Rd.