

ANNEXURE C:
APPLICATION PLAN

Site Context Plan

Legend

The Site

Scale : 1:6,000

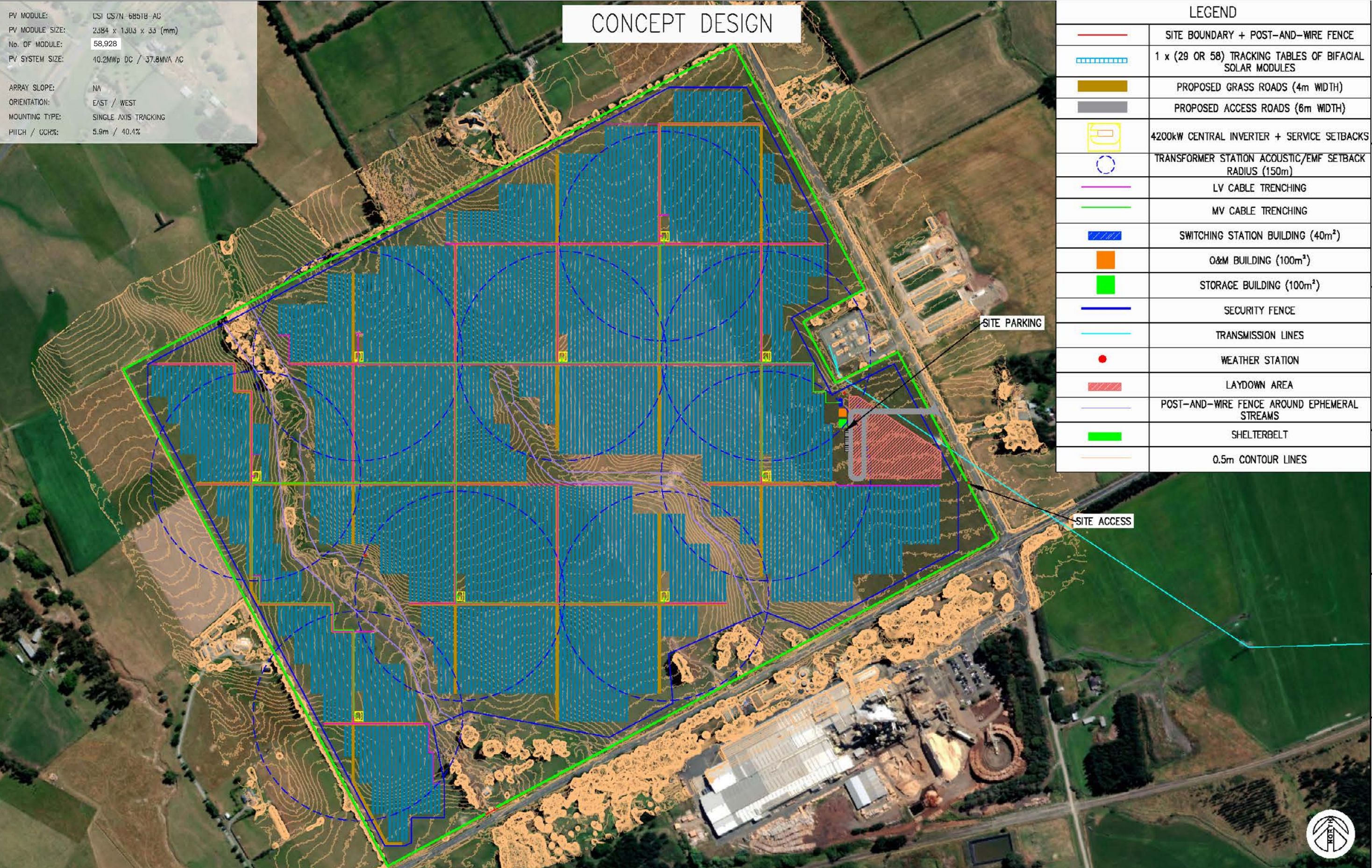
Data Source: grip.co.nz



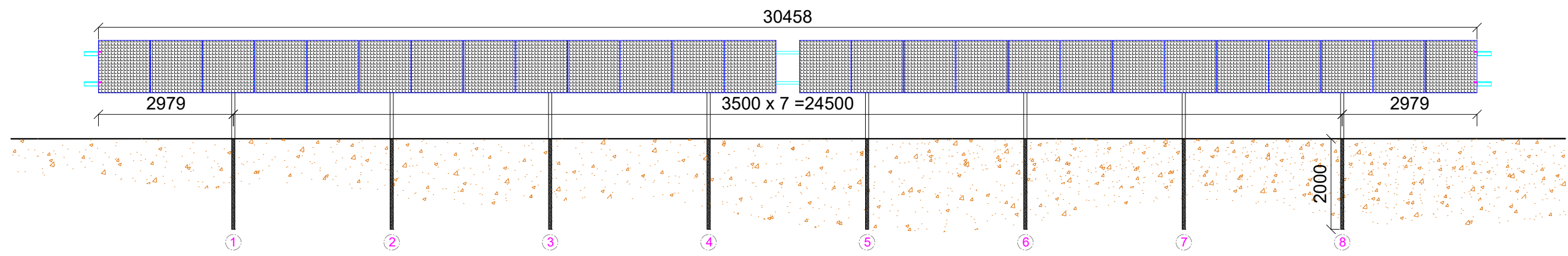
One Panel Tilting Solar Table - General Arrangement Plan



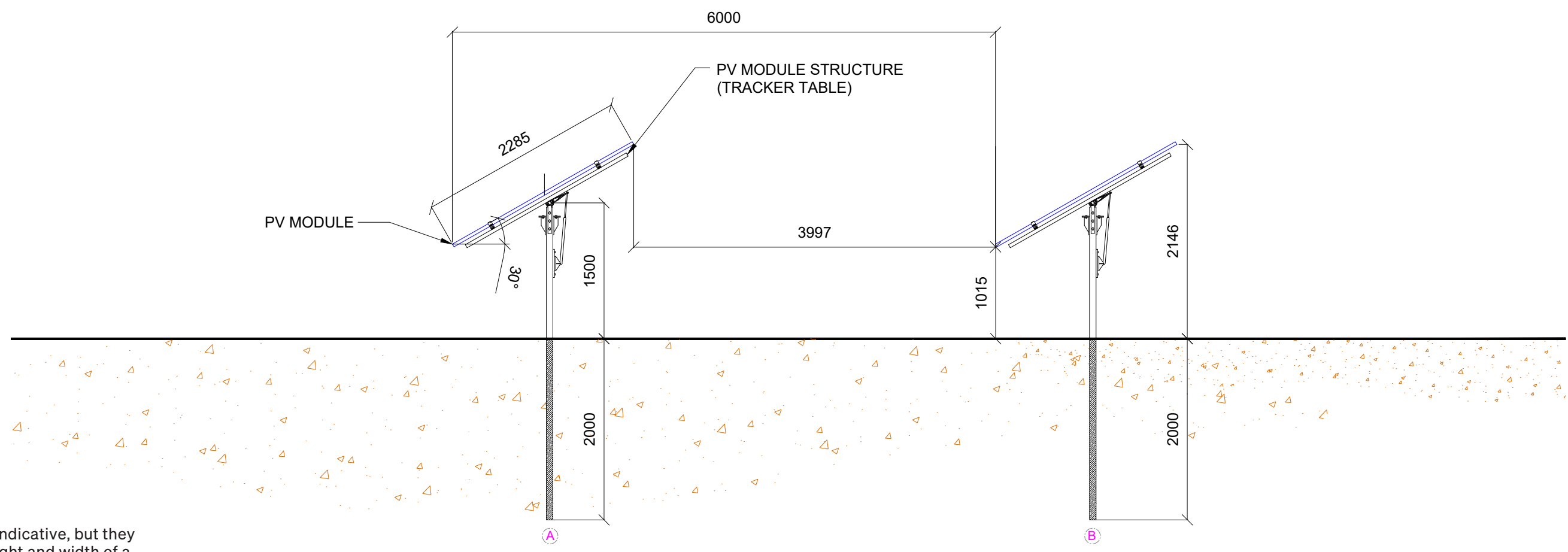
Not to Scale - To Fit Page
Data Source: Vector Powersmart



One Panel Tilting Solar Table - Indicative Cross Sections



Typical Cross Section Detail For Tracker Table (Front View)

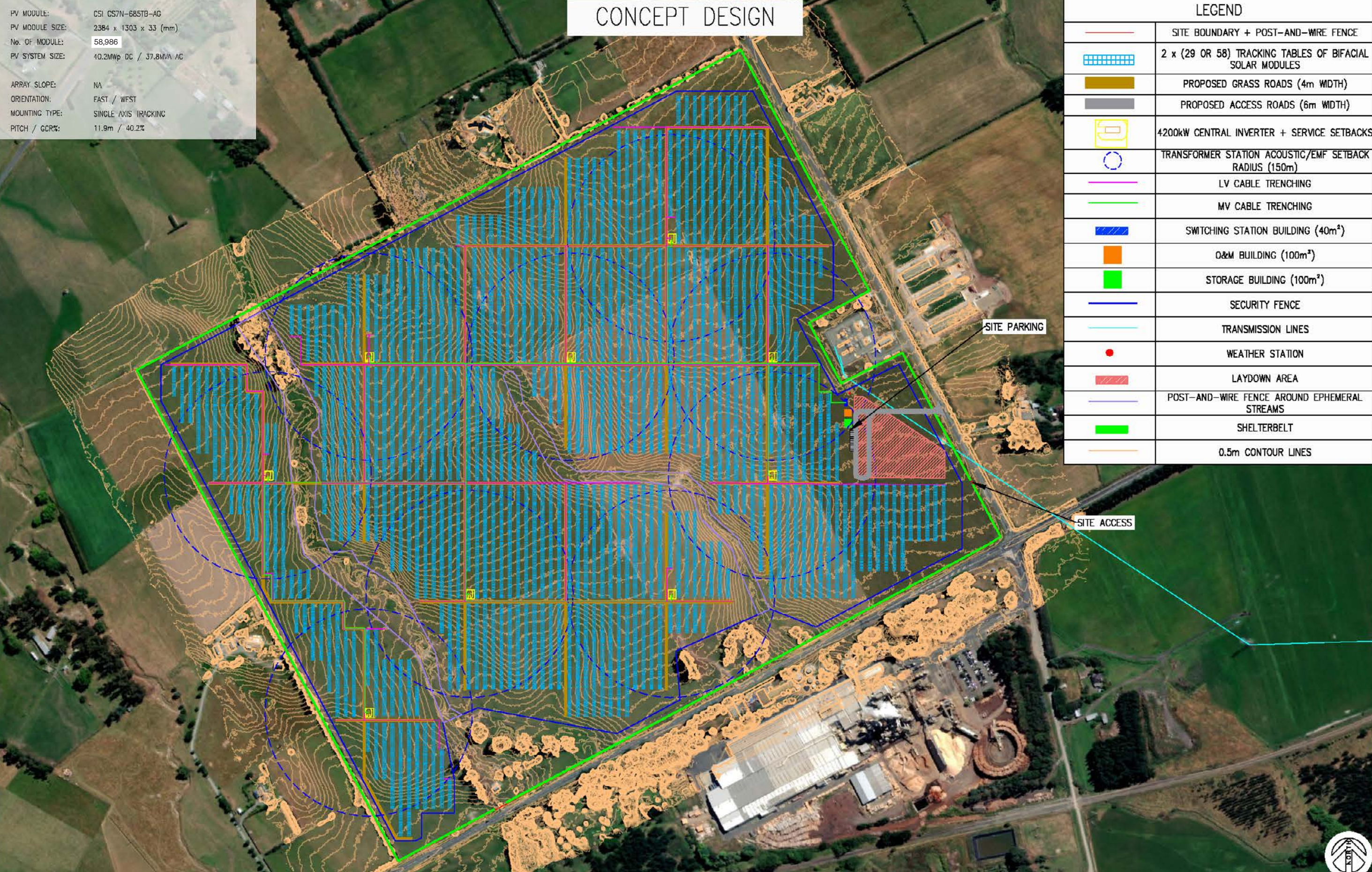


Typical Cross Section Detail for Tracker Table (Side View)

Note:
These cross sections are indicative, but they generally illustrate the height and width of a one panel single axis tracking solar table.

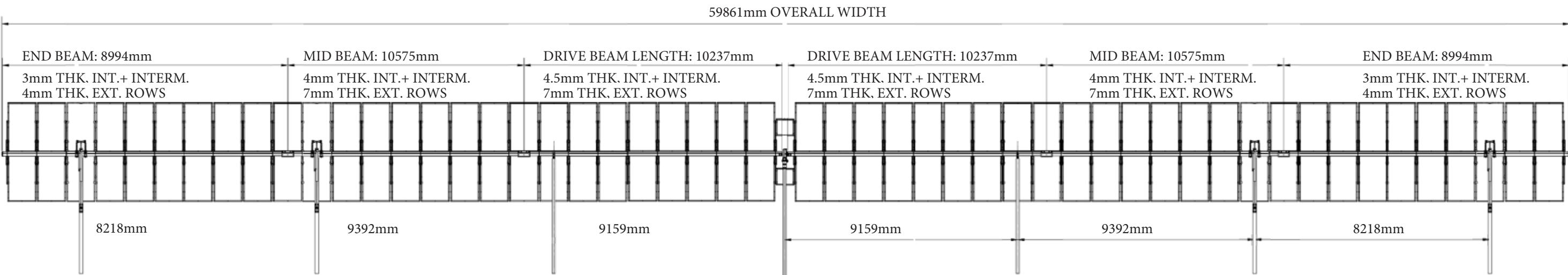
Not to Scale
Data Source: Aquila Capital Renewables Asia Pte. Ltd.

Two Panel Tilting Solar Table - General Arrangement Plan

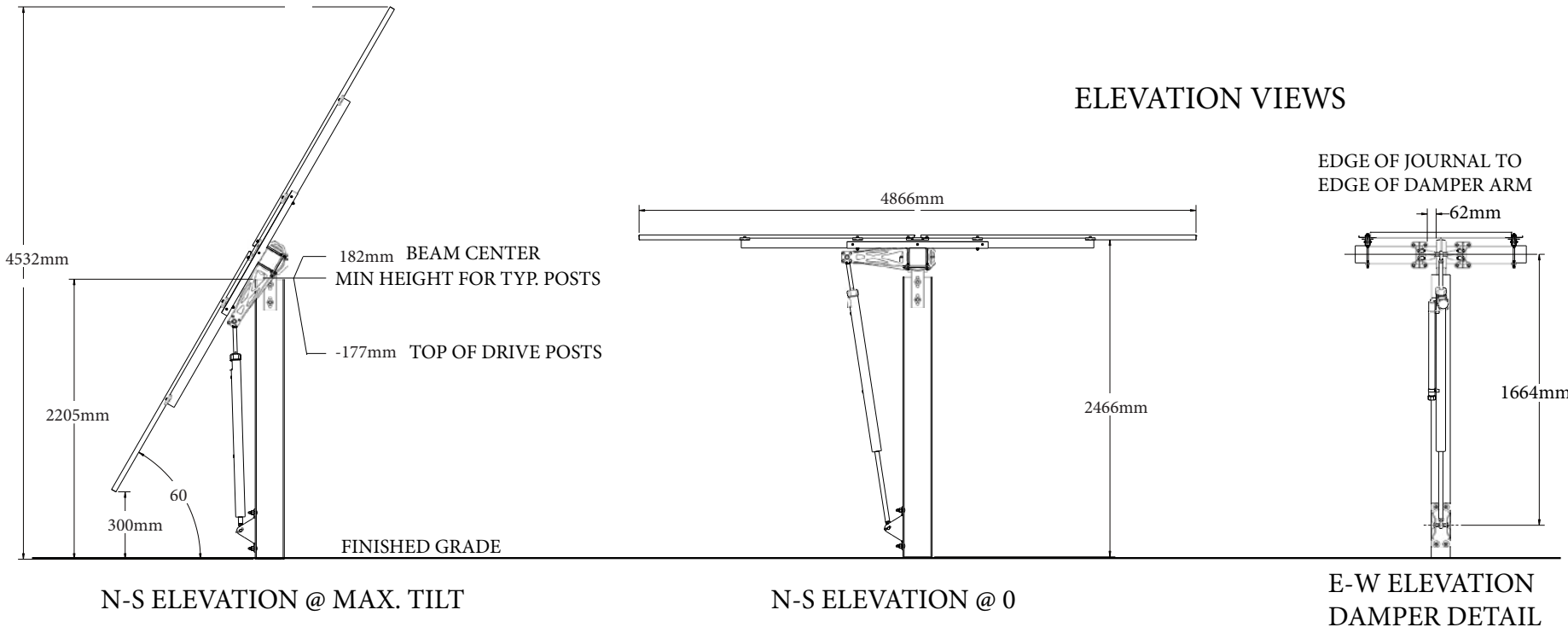


Two Panel Tilting Solar Table - Indicative Cross Sections

MECHANICAL LAYOUT



ELEVATION VIEWS



Example of a similar Solar Farm in Marlborough

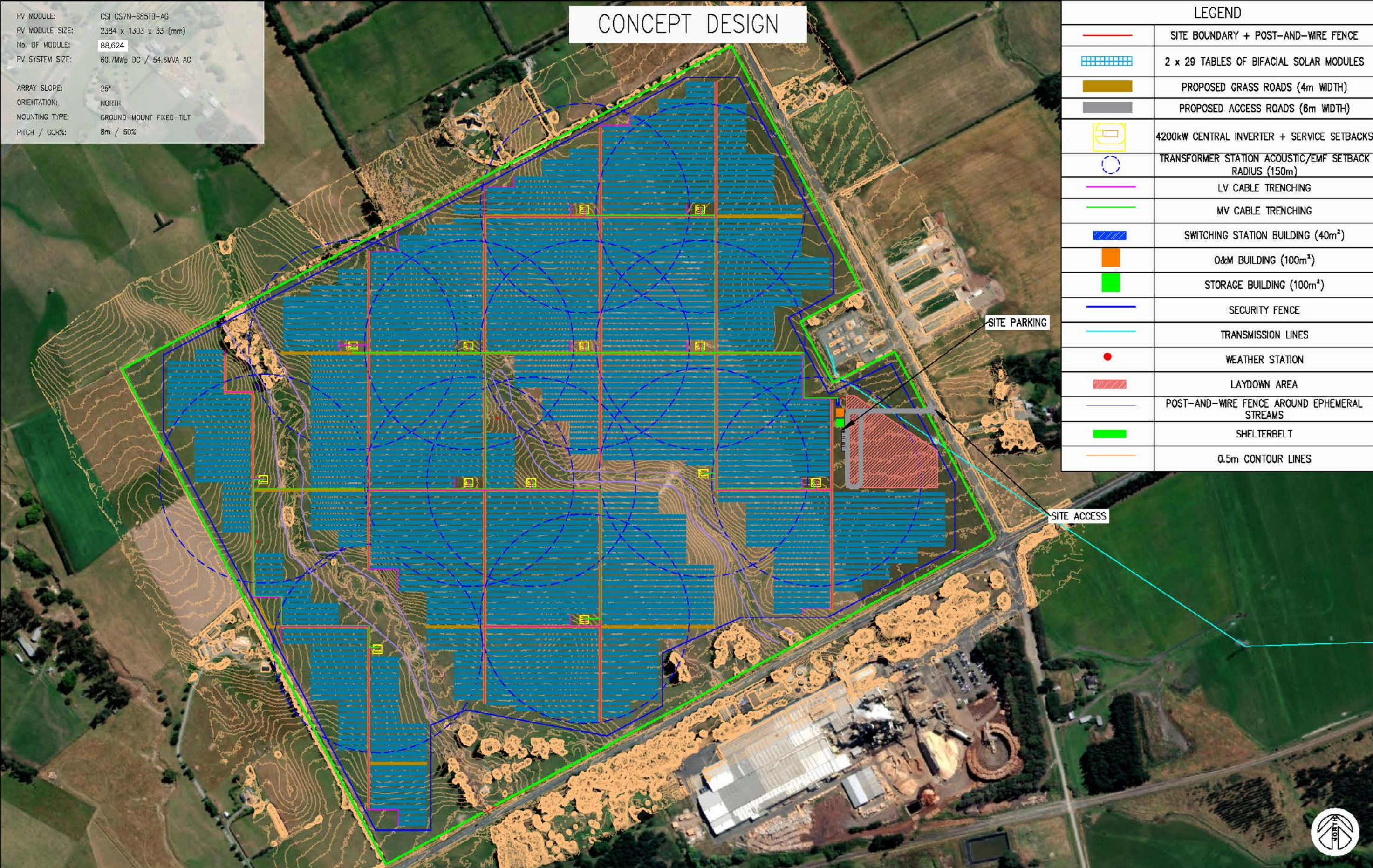
Not to Scale - To Fit Page
Data Source: Vector Powersmart Indicative Proposal

Note:
These cross sections are indicative, but they generally illustrate the height and width of a two panel single axis tracking solar table.

Fixed Solar Table - General Arrangement Plan



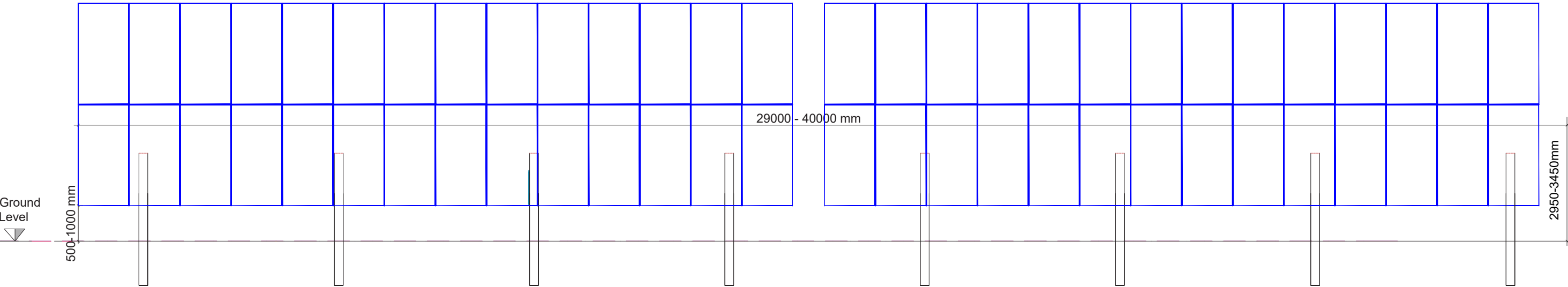
Not to Scale - To Fit Page
Data Source: Vector Powersmart



Fixed Solar Table - Indicative Cross Sections

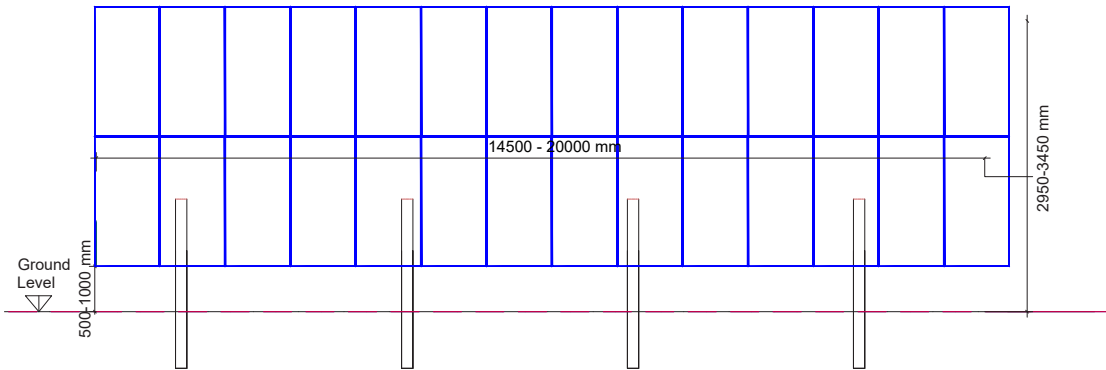
Technical Details - Mounting Structure

Example: 2P x 26 (full table) Mounting Structure



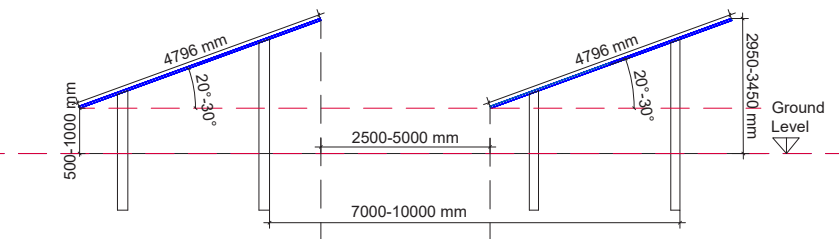
Front View

Example: 2P x 13 (half table) Mounting Structure



Front View

Example: 2P x 26 & 2P x 13 Mounting Structure



Side View



Example of a similar Solar Farm

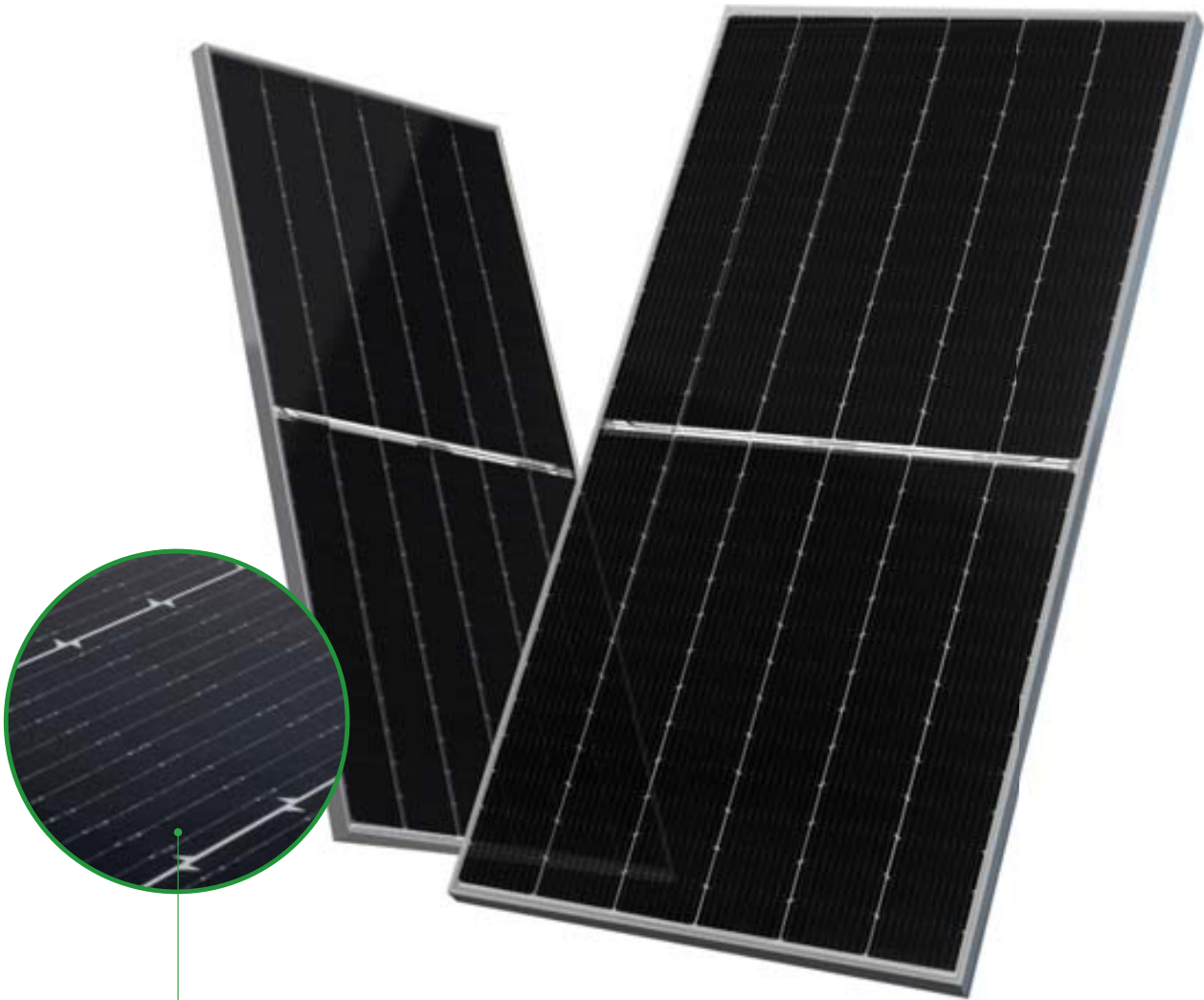
Note:
These cross sections are indicative, but they generally illustrate the height and width of a fixed tilt solar table.

Solar Panel and Inverter Information

Tiger Pro 7RL4-TV 565-585 Watt BIFACIAL MODULE TILING RIBBON (TR)



- A Example of Solar Panels
- B Mechanical Characteristics of Solar Panels
- C Example of Inverter



Tiling Ribbon Technology

A.

Mechanical Characteristics

Cell Type	P type Mono-crystalline
No. of cells	156 (2×78)
Dimensions	2411×1134×35mm (94.92×44.65×1.38 inch)
Weight	30.6 kg (67.46 lbs)
Front Glass	3.2mm, Anti-Reflection Coating, High Transmission, Low Iron, Tempered Glass
Frame	Anodized Aluminium Alloy
Junction Box	IP68 Rated
Output Cables	TUV 1×4.0mm ² (+): 400mm , (-): 200mm or Customized Length
Conector	JK03M/2B, genuine MC4 evo 2
Fire Rating	Class C

B.












Dimensions 2.815m (W) x 2.318m (H) x 1.588m (D)

C.

Landscape Mitigation Plan

Legend

	The Site
	Proposed Shelterbelt
	Proposed Native Riparian Vegetation
	Solar Panel Layout
	Inverters
	Accessway
	Security Fence
	Switching Station, O&M, Storage Buildings
	Extent of Waterways

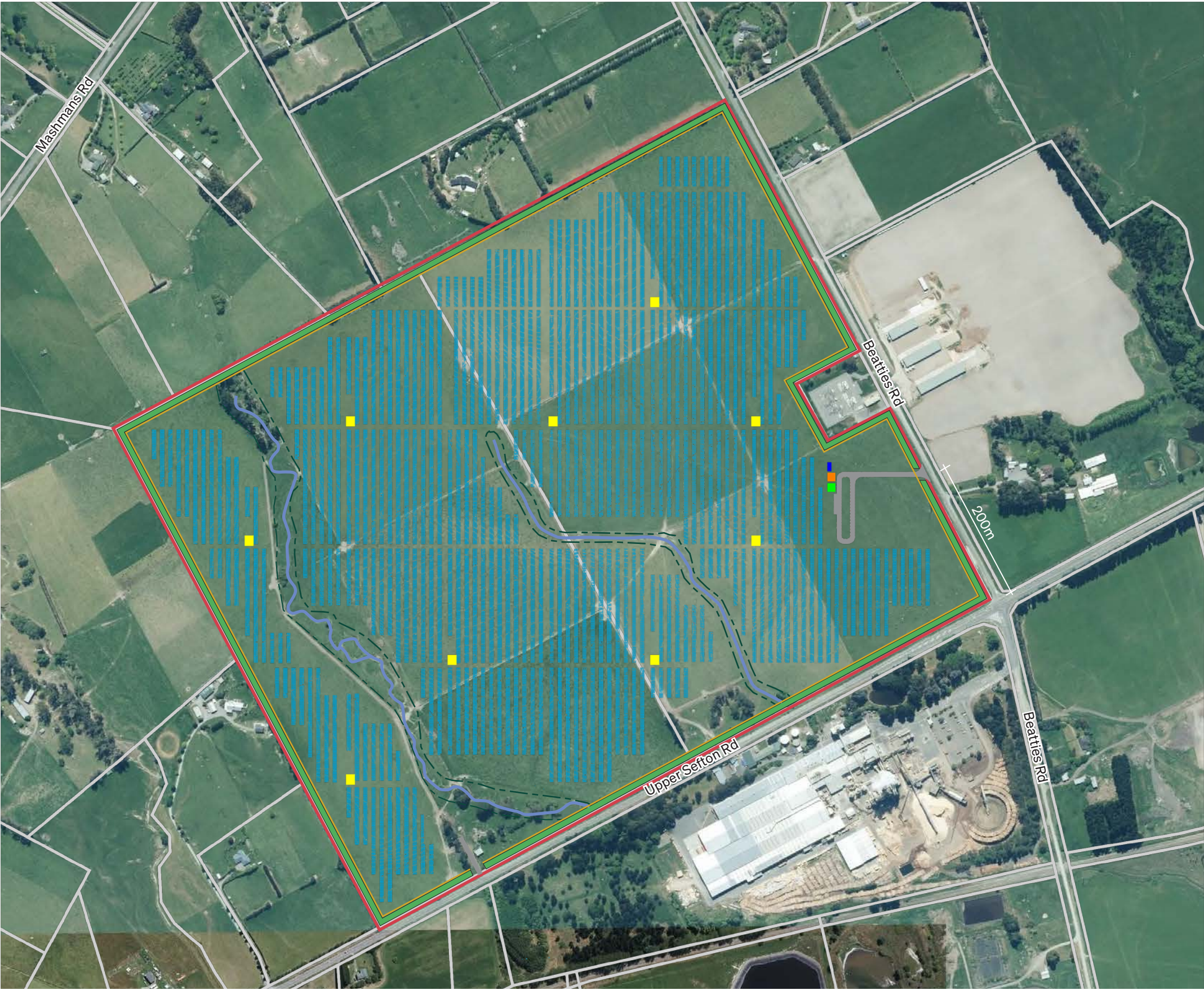
- Shelterbelt Notes
- Proposed exotic shelterbelts will consist of one row of *Cupressus* x *Leylandii* - Leyland Cypress 'Leighton Green' or similar.
 - The individual plants will be planted at 1m spacings.
 - Plants will be implemented at a height of 25 - 40cm tall.
 - Plants will be planted within the first planting season once the resource consent is approved.
 - The shelterbelt will be irrigated via an automatic irrigation system for the first 5 years following planting.
 - The shelterbelt along the sites northwest boundary will be maintained at a minimum height of 6m.
 - The shelterbelt along all other boundary lines will be maintained at a minimum height of 4m.

- Native Riparian Vegetation Notes
- Native riparian vegetation will be located up to 7m from the edge of the ephemeral watercourse. The area shown indicates the approximate extent of this vegetation.
 - A planting plan that outlines the plant species, their size at planting, spacings and a maintenance schedule will be provided to Council within 6 months of obtaining Resource Consent.
 - All native vegetation will be implemented within 2 years of gaining Resource Consent, prior to the solar panels are installed.

Note:
Solar panel layout based on two panel tilting solar table option.

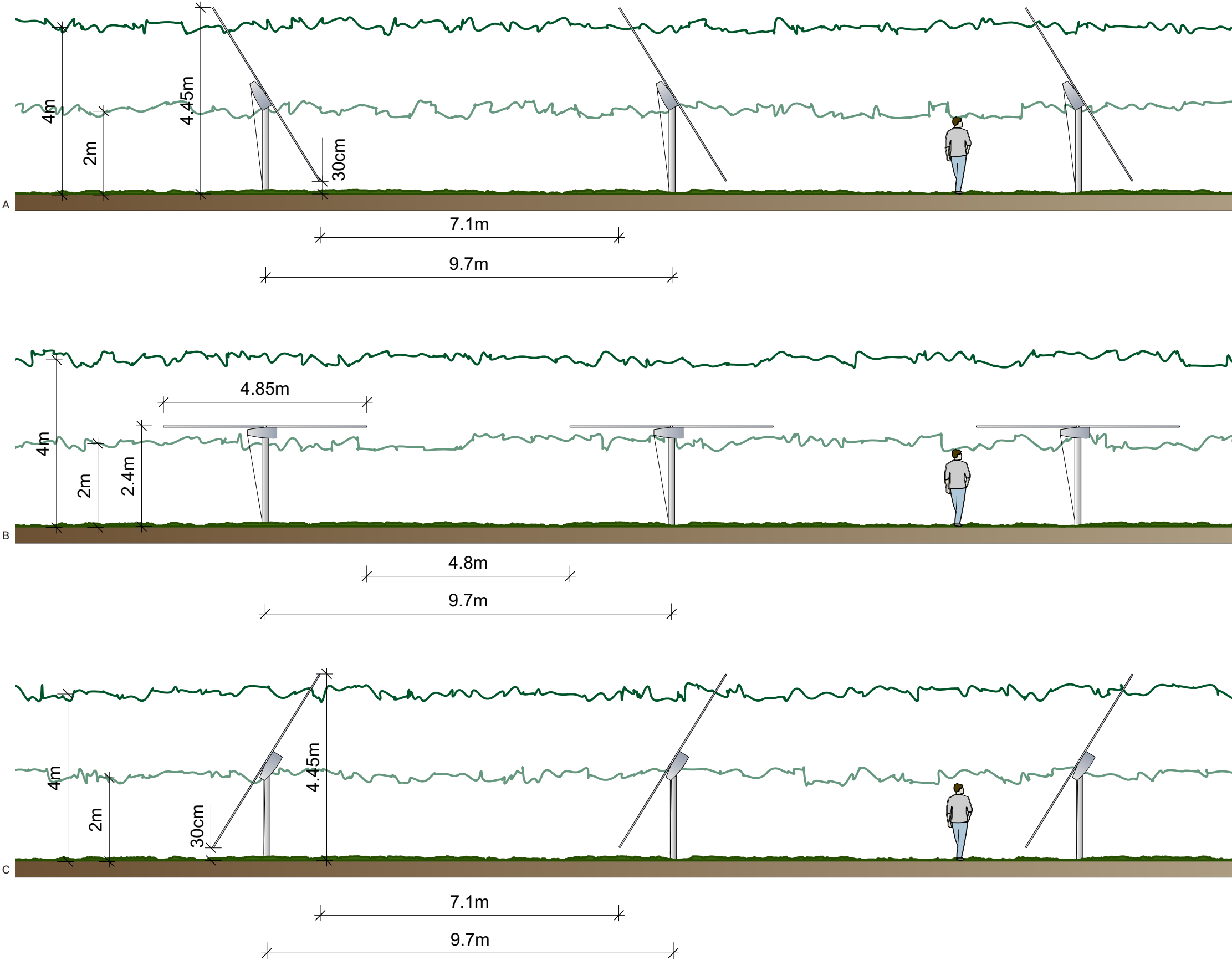


Scale : 1:6,000
Data Source: grip.co.nz



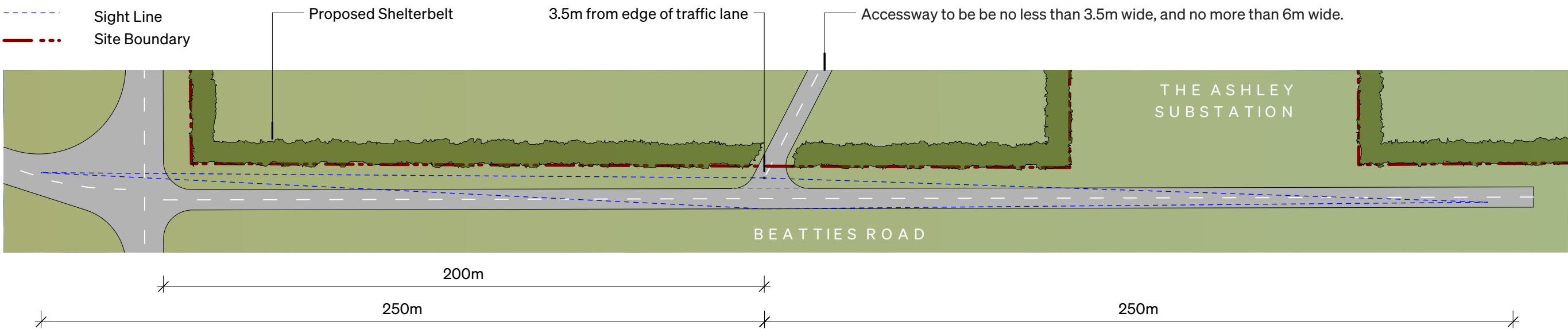
Landscape Mitigation Plan - Indicative Cross Sections

- A Morning - Solar Tables at their Maximum East Facing Extent
- B Midday - Solar Tables Parallel to the Ground
- C Afternoon - Solar Tables at their Maximum East Facing Extent



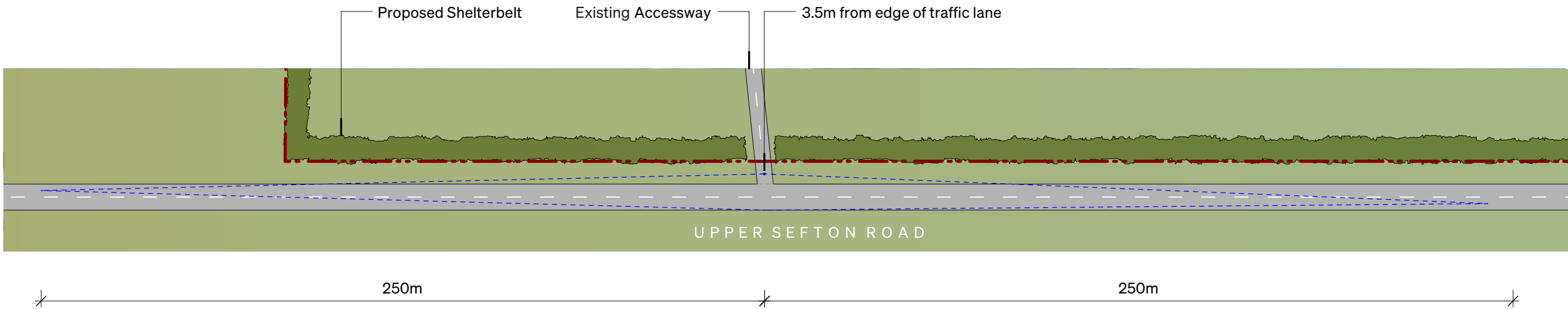
Scale 1:100 @A3

Accessway Sight Lines



Beatties Road Accessway - Sight Distances and Sight Lines for Vehicles Crossings

Scale 1:1500 @ A3



Upper Sefton Road Accessway - Sight Distances and Sight Lines for Vehicles Crossings

Scale 1:1500 @ A3

Note:
Diagrams based on Waimakariki District Plan Rule 30.6.1.25, figure 30.4.