

# MYSTERY MINIBEAST HUNT

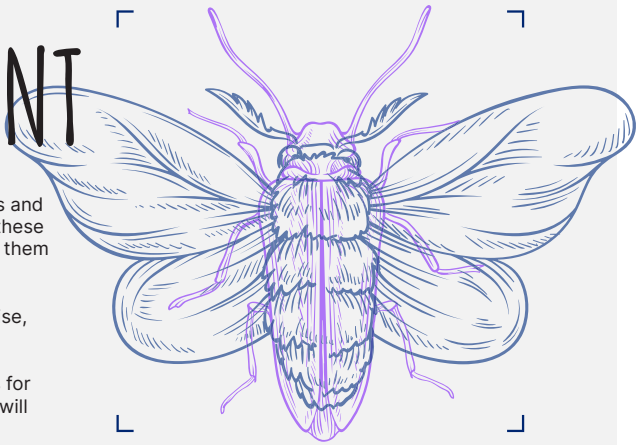
Did you know that minibeasts are **HUGELY** important for our lives. They help fruit and vegetables to grow by pollinating flowers, they can create soil for us to grow our food, they even offer a source of food for many other animals—including us!

Join our hunt to see how many small but mighty creatures you can find at your local park or garden. You can discover the homes we have placed out for minibeasts at Kaiapoi Domain, Owen Stalker Park, Matawai Park and around Rangiora Library.

Look out of weta motels, wooden discs and other invertebrate hotels. Remember, these creatures are precious so please leave them where you find them and be gentle!

If you find a bug that you don't recognise, remember you can always log in to [inaturalist.nz](http://inaturalist.nz) and upload a photo. iNaturalistNZ will give you suggestions for what you have found and bug experts will confirm what you have found.

Happy exploring!



## FIND THESE HOMES FOR MINIBEASTS



Wooden discs are round of wood placed onto bare soil. Invertebrates love to hide underneath. Lift gently and see what is living beneath.



Weta motels are purpose made wooden boxes attached to trees where critters like weta, slaters and spiders may live. Open the front of the motel and look inside.



Piles of stones, leaf litter and dead wood are all great places to look for creatures. Be quiet so you don't scare the bugs and see what you can find.

## PLANTS FOR MINIBEASTS

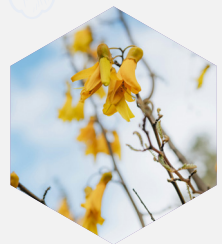
Harakeke has flowers with lots of nectar. Insects love this plant. Two native moths can also be found chewing on the leaves.



Ti Kouka / Cabbage Tree is another bug favourite. See if you can spot the camouflaged moth or its caterpillars.



Kōwhai trees are another source of nectar for insects. Can you spot the Kōwhai moths caterpillars on the leaves?



BUGS' LIFE

EGGS



LARVAE



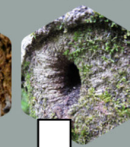
PUPAE



SHELL



A BUG HOLE



NO LEGS

EARTHWORM



SNAIL



SLUG



FLAT WORM



MAGGOT



SIX LEGS

ANT



BEETLE



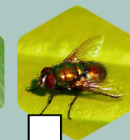
CRICKET



COCKROACH



FLY



CRANEFLY



DRAGONFLY



HOPPER



GRASSHOPPER



PRAYING MANTIS



CICADA



MOTH



BUTTERFLY



MOSQUITO



BEE



WASP



BUMBLEBEE



STICK INSECT



EARWIG



VEGETABLE BUG



WETA



LADYBIRD



EIGHT LEGS

SPIDER



HARVESTMAN



MITE PSEUDOSCORPION



MANY LEGS

SLATER



CENTIPEDE



MILLIPEDE



PERIPATUS



CATERPILLAR



AMPHIPOD

