

WAIMAKARIRI DISTRICT COUNCIL
HISTORIC HERITAGE ITEM RECORD FORM

2021 District Plan Item No. HH075
HERITAGE ITEM NAME 'Erindale', former O'Farrell farmhouse
ADDRESS 141 Mill Road (O'Farrells Road frontage), Cust
PHOTOGRAPH



(WDC)

DISTRICT PLAN ITEM NO. H092 **HNZ LIST NO. & CATEGORY** n / a
(at time of assessment)

LEGAL DESCRIPTION Lot 2 DP 459205

VALUATION NUMBER 2158007200

DATE OF CONSTRUCTION c.1869

**ARCHITECT/DESIGNER/
BUILDER** Unknown

STYLE Colonial vernacular

PHYSICAL DESCRIPTION

Single-storey dwelling with rectangular footprint and saltbox roof form. Principal, east-facing elevation has bullnose veranda carried on plain posts. Double-hung sash windows; central entrance door on symmetrical facade.

MATERIALS/STRUCTURE

Timber framing and weatherboard cladding, corrugated metal roofing.

ADDITIONS/ALTERATIONS

Unknown, if any.

SETTING

The dwelling stands on the north side of O'Farrells Road, west of its intersection with Mill Road. Hedging defines the house lot from the rural land parcel as a whole. The house has an eastern outlook and can be seen from Mill Road. The extent of scheduling is limited to the immediate setting of the house, rather than the land parcel as a whole and notwithstanding the potential archaeological values of the house lot within the rural property.

HISTORY

A crown grant to Thomas O'Farrell for rural section 8499 north of the village of Cust was made in November 1868. Irish-born Thomas Farrell (1835-1916) was clerk to the Cust Road Board for almost 25 years until its cessation in 1912, ran the public pound at his farm, was an active member of St James' on the Cust Anglican Church, a member of the Oddfellows, and served on both the local school committee and the domain board. He had married Jane Meredith (1835-1900) in 1856 and the couple emigrated to New Zealand with the first of their nine children in 1861. The O'Farrells lived in Christchurch for four years before moving to Cust. Jane died at 'Erindale' in July 1900. Thomas advertised the farm, including its 6-room house, for lease in March 1913 and he left the district shortly thereafter. He died on 15 August 1916 and was buried in the Cust cemetery along with his wife. The executors of the O'Farrells' estate sold the farm to George Watson in 1918. The property was held by members of the Watson family from 1918 until 1962 and since 1964 has been owned by the Kingsbury family. It was subdivided to its current extent in 2013.

HISTORICAL AND SOCIAL SIGNIFICANCE

'Erindale', the former O'Farrell farmhouse has historical significance for its association with Thomas and Jane O'Farrell and their family and, more generally, the rural-residential development of Cust Valley in the later 19th century.

CULTURAL AND SPIRITUAL SIGNIFICANCE

'Erindale', the former O'Farrell farmhouse has cultural value as a demonstration of the way of life of its early owner/occupiers.

ARCHITECTURAL AND AESTHETIC SIGNIFICANCE

'Erindale', the former O'Farrell farmhouse has architectural significance as a vernacular colonial dwelling. The house's designer is currently unknown.

TECHNOLOGICAL AND CRAFTSMANSHIP SIGNIFICANCE

'Erindale', the former O'Farrell farmhouse has technological and craftsmanship value for the evidence it provides of Victorian building materials and methods. The house's builder is currently unknown.

CONTEXTUAL SIGNIFICANCE

'Erindale', the former O'Farrell farmhouse has contextual significance for the contribution it makes to the historic character of its rural setting and the visual evidence it provides of the colonial settlement and development of Cust Valley.

ARCHAEOLOGICAL AND SCIENTIFIC SIGNIFICANCE

As the farmhouse pre-dates 1900 its site may have potential archaeological significance relating to the construction and early use of the property.

SUMMARY OF HERITAGE SIGNIFICANCE

'Erindale', the former O'Farrell farmhouse has overall significance to Cust and the Waimakariri district as a whole. The dwelling has historical significance for its association with Thomas and Jane O'Farrell and their family and cultural value as a demonstration of the way of life of its early residents. 'Erindale', the former O'Farrell farmhouse has architectural significance as a colonial vernacular dwelling and technological and craftsmanship value for its Victorian construction methods and materials. 'Erindale', the former O'Farrell farmhouse has contextual significance for the contribution it makes to the historic character of Cust Valley and its site has potential archaeological values in view of the dwelling's age.

HERITAGE CATEGORY

B

REFERENCES

- *Press* 22 October 1875, p. 5; 12 September 1896, p. 1; 16 July 1900, p. 8; 14 July 1903, p. 1; 25 March 1913, p. 11; 16 August 1916, p. 9; 6 March 1918, p. 12; 23 August 1918, p. 1.
- *Star* 7 September 1880, p. 2; 12 September 1896, p. 4; 16 July 1900, p. 3; 26 August 1916, p. 4.
- *Lyttelton Times* 24 July 1861, p. 4; 22 September 1886, p. 6; 17 June 1889, p. 3; 26 August 1893, p. 1; 8 February 1908, p. 3; 27 April 1912, p. 14; 25 March 1913, p. 11; 9 May 1913, p. 16; 5 June 1913, p. 19.
- *Cyclopedia of New Zealand – Canterbury Provincial District* Christchurch, 1903; available online.
- <https://collection.canterburymuseum.com/objects/715802>

REPORT COMPLETED

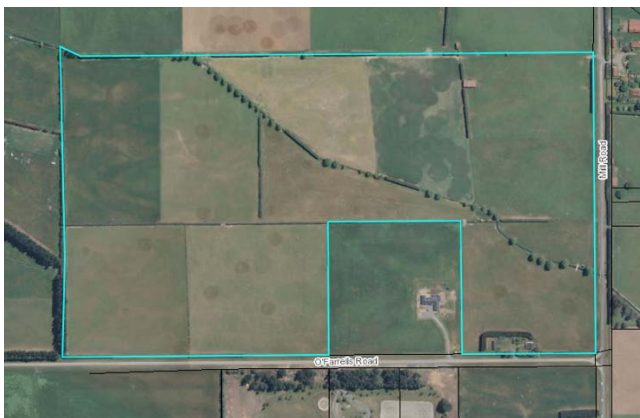
9 March 2019

AUTHOR

Dr Ann McEwan / Heritage Consultancy Services



Extent of scheduling, limited to immediate setting of the house, 'Erindale', former O'Farrell farmhouse, 141 Mill Road, Cust.



Land parcel as a whole with house lot at lower right.