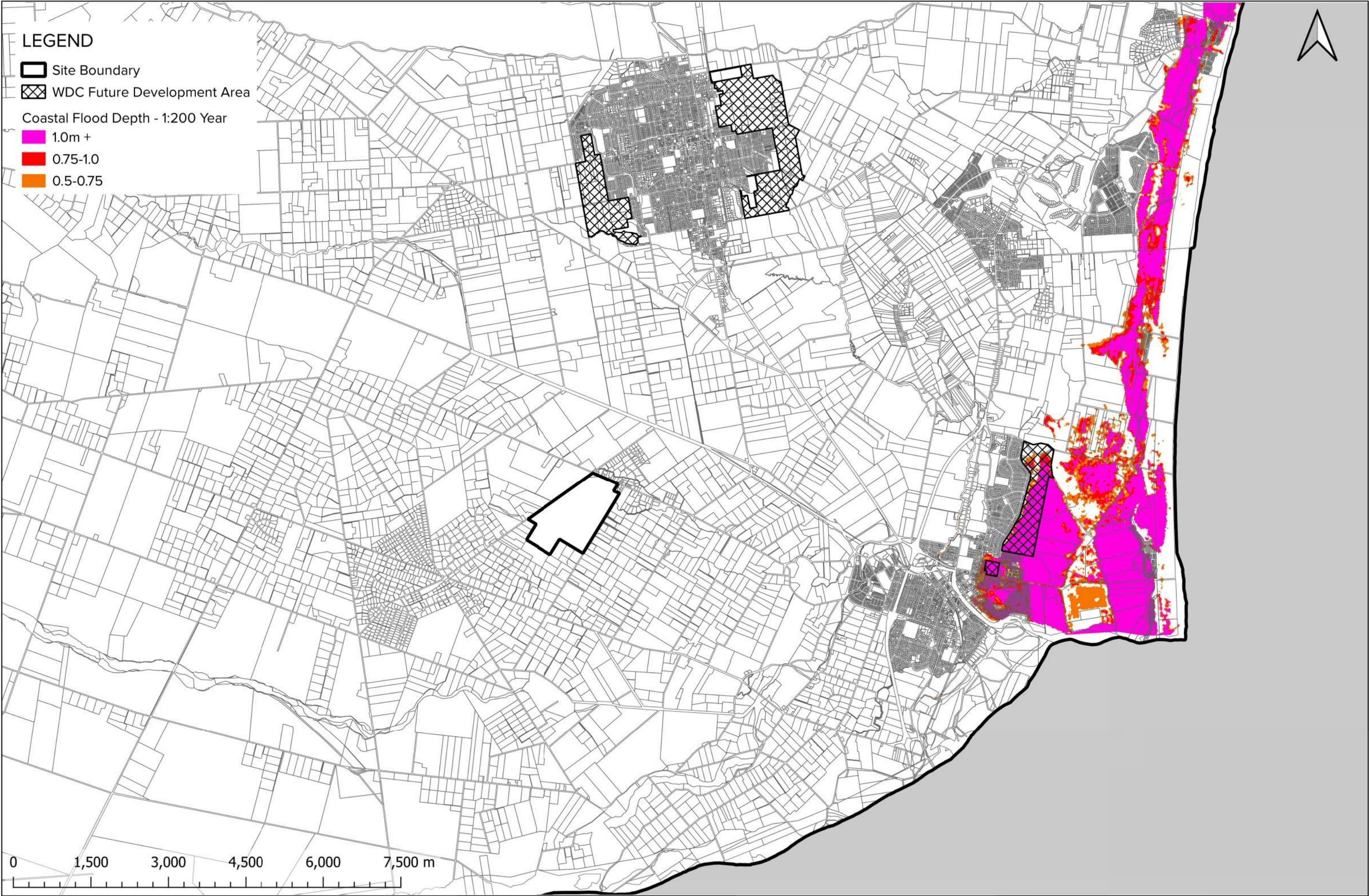
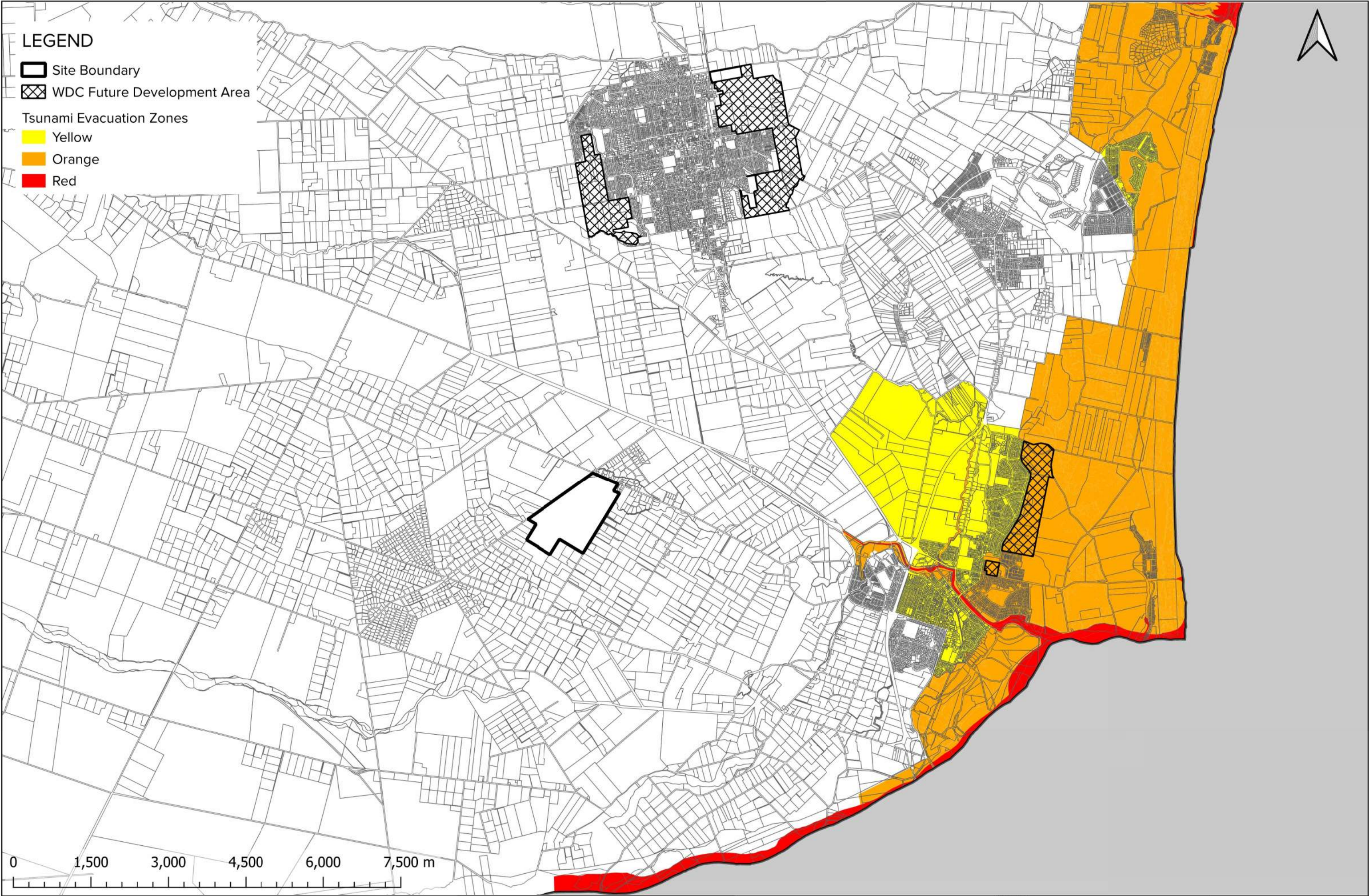


Prepared By: Chris Sexton Date: 29/06/2023	 <small>Level 1, 93 Manchester Street, Christchurch Ph. 03 377 3290 11 Clayton St, Newmarket, Auckland 1149 Ph. 09 600 1099 www.inovo.nz</small> <small>Disclaimer: This document shall only be reproduced in full with approval from Inovo Projects Ltd.</small>	Client ROLLESTON INDUSTRIAL DEVELOPMENTS LTD	Project MILL ROAD OHOKA PLAN CHANGE PC31	Map Title COMBINED CONSTRAINTS MAP	Status FOR INFORMATION
					Map No. 14895-M-850 [E]



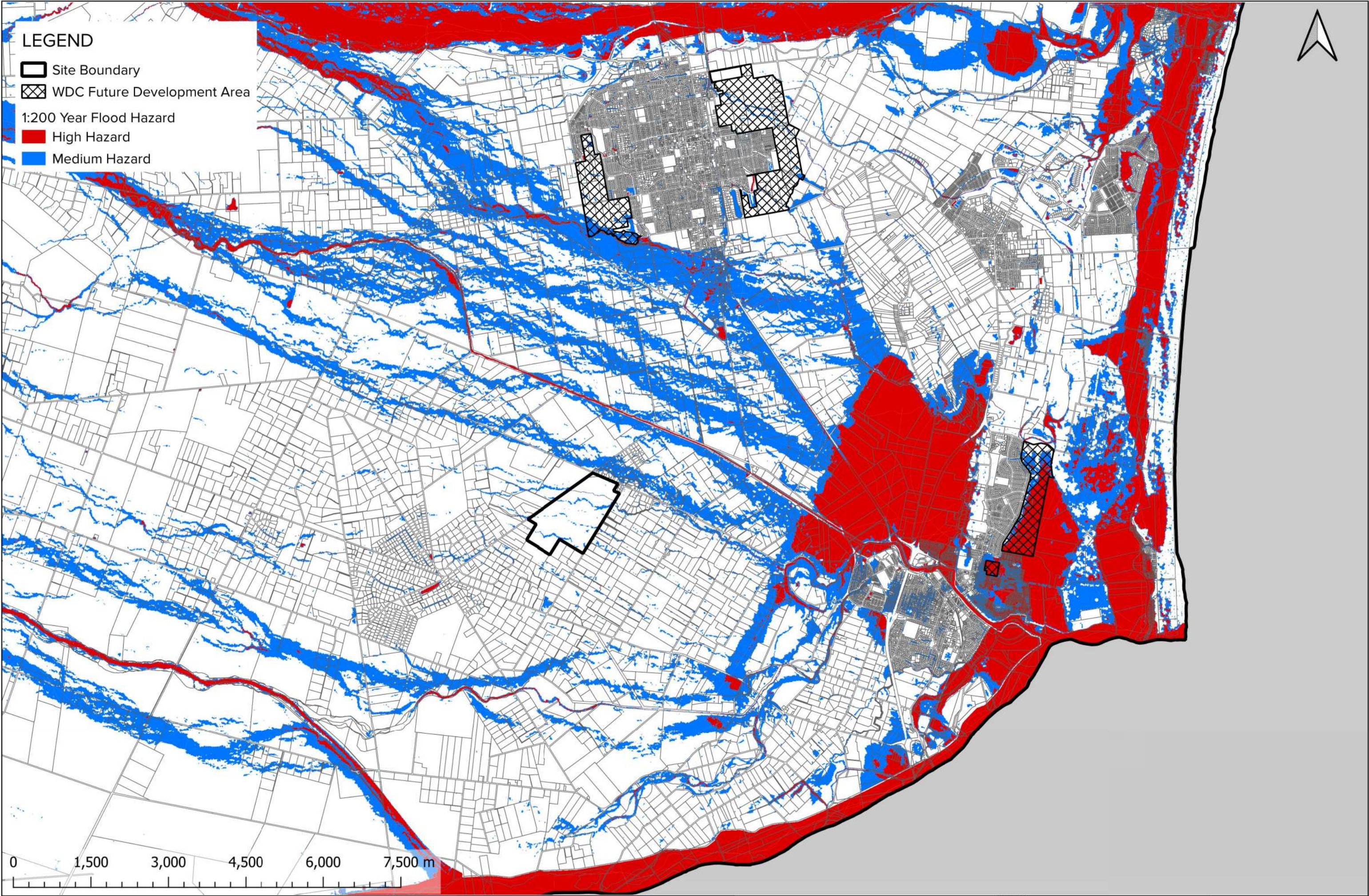
Prepared By: Chris Sexton Date: 28/06/2023	 Level 1, 93 Manchester Street, Christchurch Ph. 03 377 3290 11 Clayton St, Newmarket, Auckland 1149 Ph. 09 600 1099 www.inovo.nz <small>Disclaimer: This document shall only be reproduced in full with approval from Inovo Projects Ltd.</small>	Client ROLLESTON INDUSTRIAL DEVELOPMENTS LTD	Project MILL ROAD OHOKA PLAN CHANGE PC31	Map Title WDC COASTAL FLOOD DEPTH MAP (1 IN 200 YEAR)	Status FOR INFORMATION
					Map No. 14895-M-820 [C]



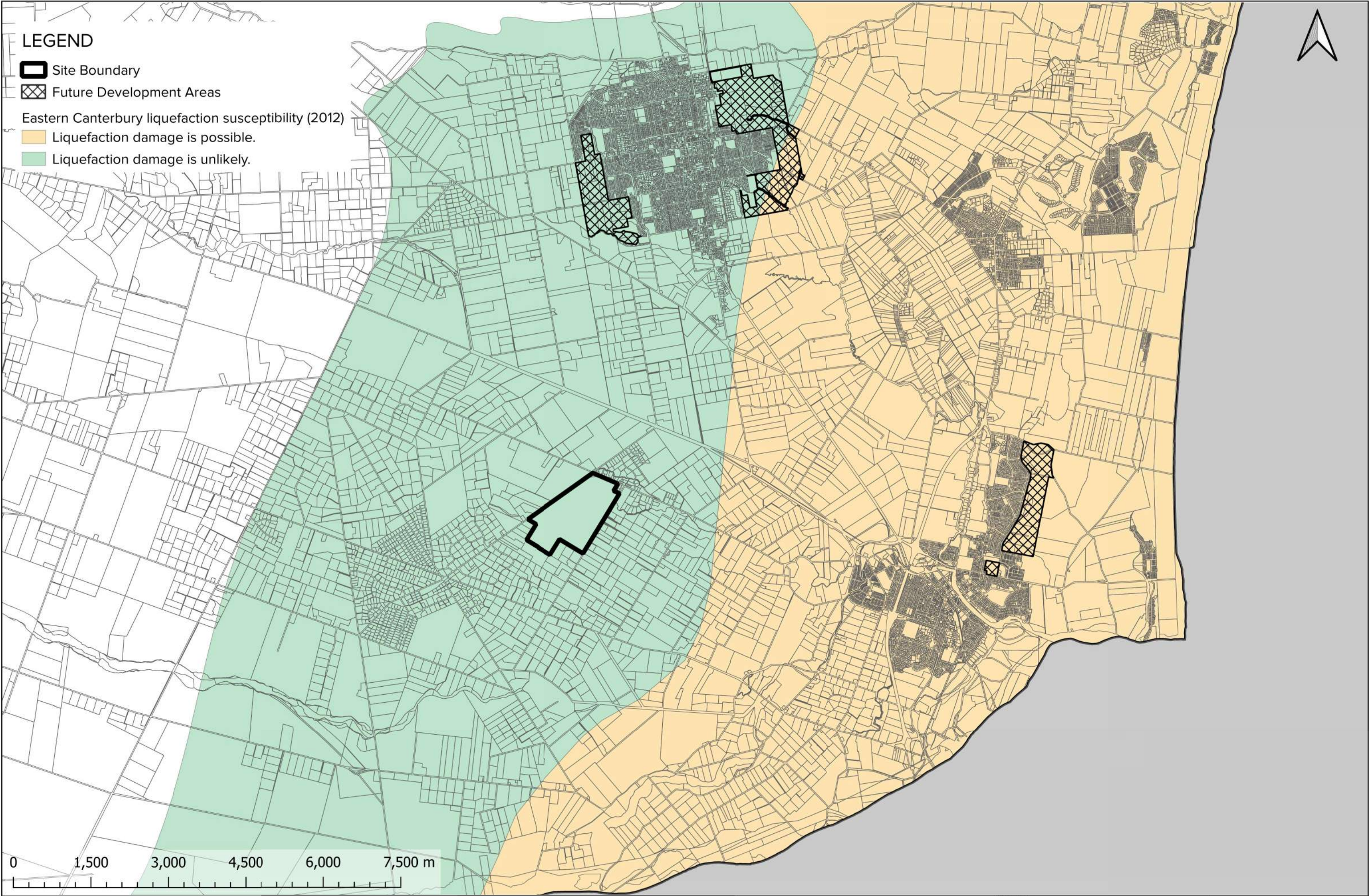
LEGEND

- Site Boundary
- WDC Future Development Area
- Tsunami Evacuation Zones
 - Yellow
 - Orange
 - Red

Prepared By: Chris Sexton Date: 29/06/2023		 Level 1, 93 Manchester Street, Christchurch Ph. 03 377 3290 11 Clayton St, Newmarket, Auckland 1149 Ph. 09 600 1099 www.inovo.nz <small>Disclaimer: This document shall only be reproduced in full with approval from Inovo Projects Ltd.</small>		Client ROLLESTON INDUSTRIAL DEVELOPMENTS LTD	Project MILL ROAD OHOKA PLAN CHANGE PC31	Map Title WDC TSUNAMI EVACUATION ZONE MAP	Status FOR INFORMATION Map No. 14895-M-821 [E]
---	--	---	--	--	--	---	--



<p>Prepared By: Chris Sexton</p> <p>Date: 29/06/2023</p> <p>INOVO PROJECTS</p> <p>Level 1, 93 Manchester Street, Christchurch Ph. 03 377 3290 11 Clayton St, Newmarket, Auckland 1149 Ph. 09 600 1099 www.inovo.nz</p> <p><small>Disclaimer: This document shall only be reproduced in full with approval from Inovo Projects Ltd.</small></p>	<p>Client</p> <p>ROLLESTON INDUSTRIAL DEVELOPMENTS LTD</p>	<p>Project</p> <p>MILL ROAD OHOKA PLAN CHANGE PC31</p>	<p>Map Title</p> <p>WDC FLOOD HAZARD MAP</p>	<p>Status</p> <p>FOR INFORMATION</p> <hr/> <p>Map No.</p> <p>14895-M-825 [E]</p>
---	---	---	---	--



LEGEND

Site Boundary

Future Development Areas

Eastern Canterbury liquefaction susceptibility (2012)

Liquefaction damage is possible.

Liquefaction damage is unlikely.

Prepared By: Chris Sexton
Date: 28/06/2023



Level 1, 93 Manchester Street, Christchurch
Ph. 03 377 3290 11
Clayton St, Newmarket, Auckland 1149
Ph. 09 600 1099
www.inovo.nz

Disclaimer: This document shall only be reproduced in full with approval from Inovo Projects Ltd.

Client

ROLLESTON INDUSTRIAL
DEVELOPMENTS LTD

Project

MILL ROAD OHOKA
PLAN CHANGE PC31

Map Title

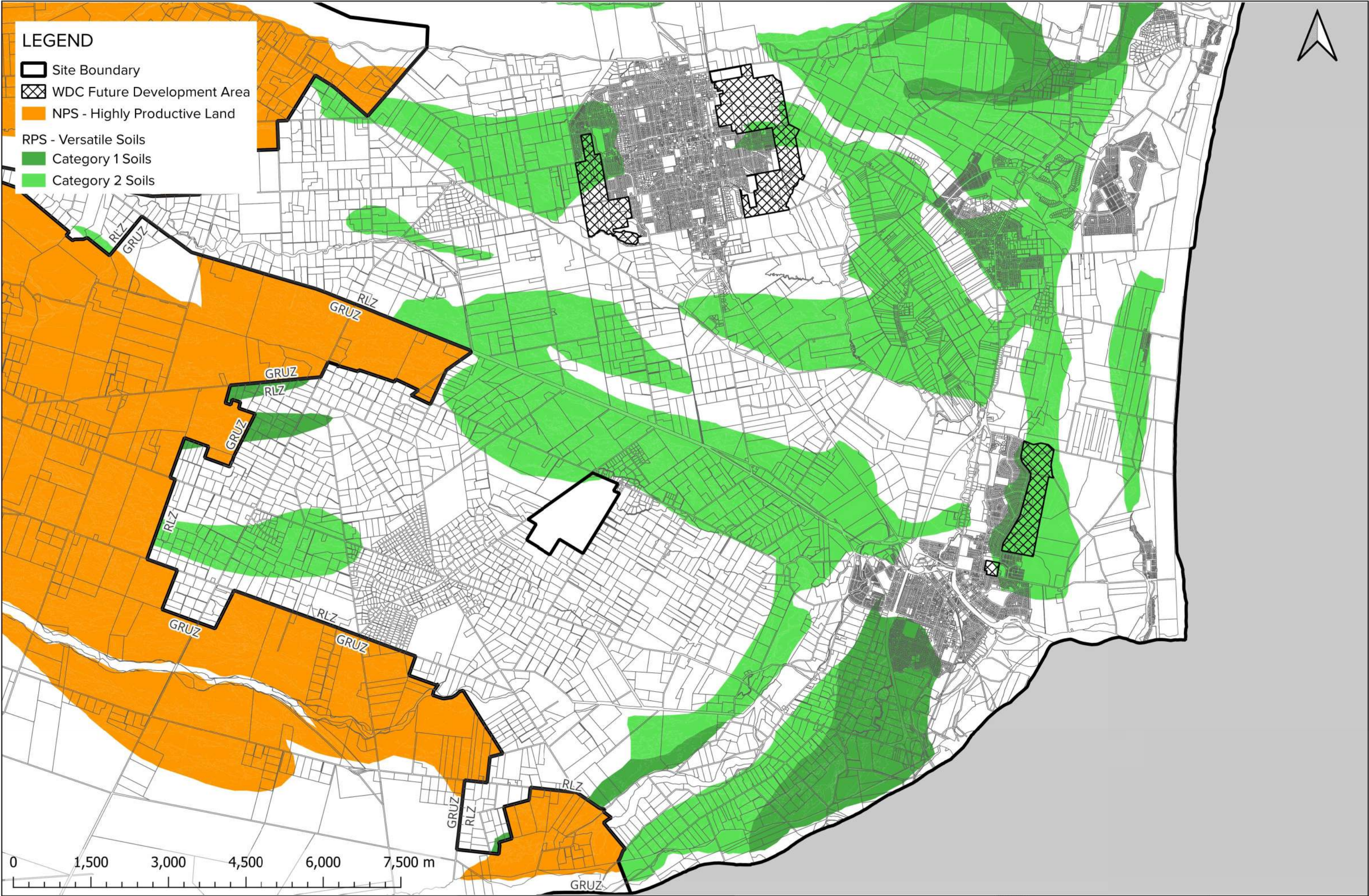
LIQUEFACTION RISK AREAS

Status

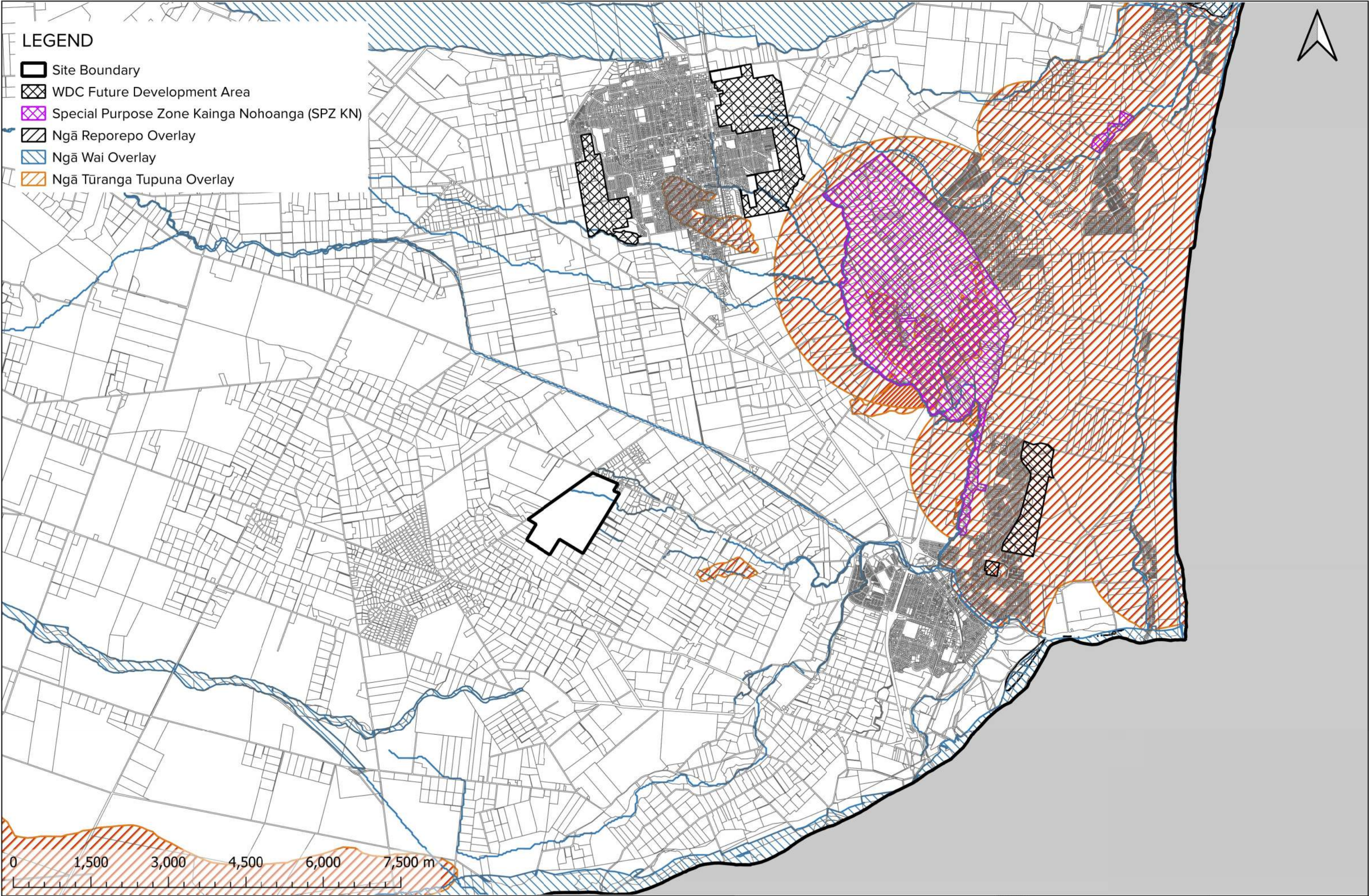
FOR INFORMATION

Map No.

14895-M-810 [C]



<p>Prepared By: Chris Sexton Date: 29/06/2023</p> <p>INOVO PROJECTS Level 1, 93 Manchester Street, Christchurch Ph. 03 377 3290 11 Clayton St, Newmarket, Auckland 1149 Ph. 09 600 1099 www.inovo.nz</p> <p><small>Disclaimer: This document shall only be reproduced in full with approval from Inovo Projects Ltd.</small></p>	<p>Client ROLLESTON INDUSTRIAL DEVELOPMENTS LTD</p>	<p>Project MILL ROAD OHOKA PLAN CHANGE PC31</p>	<p>Map Title SOIL CLASSIFICATION MAP</p>	<p>Status FOR INFORMATION</p> <p>Map No. 14895-M-830 [F]</p>
---	--	--	---	--



LEGEND

- Site Boundary
- WDC Future Development Area
- Special Purpose Zone Kainga Nohoanga (SPZ KN)
- Ngā Reporepo Overlay
- Ngā Wai Overlay
- Ngā Tūranga Tupuna Overlay

Prepared By: Chris Sexton
Date: 28/06/2023



Level 1, 93 Manchester Street, Christchurch
Ph. 03 377 3290 11
Clayton St, Newmarket, Auckland 1149
Ph. 09 600 1099
www.inovo.nz

Disclaimer: This document shall only be reproduced in full with approval from Inovo Projects Ltd.

Client

**ROLLESTON INDUSTRIAL
DEVELOPMENTS LTD**

Project

**MILL ROAD OHOKA
PLAN CHANGE AREA**

Map Title

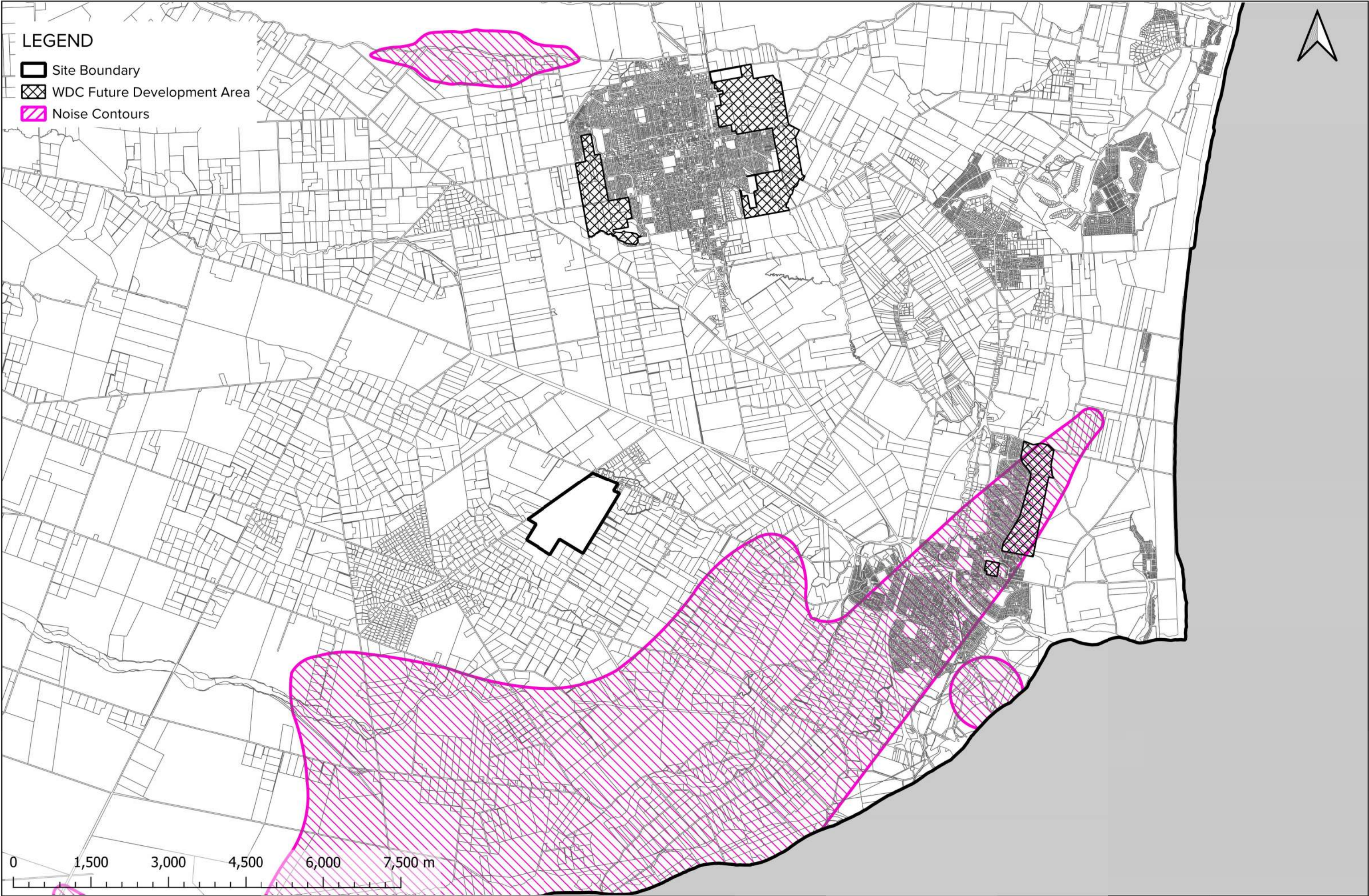
**AREAS OF MĀORI CULTURAL
SIGNIFICANCE**

Status

FOR INFORMATION

Map No.

14895-M-840 [C]



LEGEND

- Site Boundary
- WDC Future Development Area
- Noise Contours

Prepared By: Chris Sexton
Date: 29/06/2023



Level 1, 93 Manchester Street, Christchurch
Ph. 03 377 3290 11
Clayton St, Newmarket, Auckland 1149
Ph. 09 600 1099
www.inovo.nz

Disclaimer: This document shall only be reproduced in full with approval from Inovo Projects Ltd.

Client

**ROLLESTON INDUSTRIAL
DEVELOPMENTS LTD**

Project

**MILL ROAD OHOKA
PLAN CHANGE PC31**

Map Title

NOISE CONTOUR MAP

Status

FOR INFORMATION

Map No.

14895-M-845 [E]



Prepared By: Chris Sexton Date: 28/06/2023		 Level 1, 93 Manchester Street, Christchurch Ph. 03 377 3290 11 Clayton St, Newmarket, Auckland 1149 Ph. 09 600 1099 www.inovo.nz <small>Disclaimer: This document shall only be reproduced in full with approval from Inovo Projects Ltd.</small>		Client ROLLESTON INDUSTRIAL DEVELOPMENTS LTD	Project MILL ROAD OHOKA PLAN CHANGE PC31	Map Title LOCAL PURPOSE RESERVES AND OPEN SPACE ZONES	Status FOR INFORMATION Drawing No. 14895-M-875 [A]
---	--	---	--	--	--	---	--