

# WAIMAKARIRI DISTRICT COUNCIL REGISTER OF SPEED LIMITS

WARNING: This document is regularly updated. Please check that you have the most recent version by visiting [www.waimakariri.govt.nz](http://www.waimakariri.govt.nz). For more information or questions about this document, please telephone 03 311 8900.

# CONTENTS

<b>INTRODUCTION .....</b>	<b>3</b>
<b>SCHEDULE 1 .....</b>	<b>4</b>
10 KM/H SPEED LIMIT .....	4
<b>SCHEDULE 2 .....</b>	<b>5</b>
20 KM/H SPEED LIMIT .....	5
<b>SCHEDULE 3 .....</b>	<b>6</b>
30 KM/H SPEED LIMIT .....	6
<b>SCHEDULE 4 .....</b>	<b>8</b>
40 KM/H SPEED LIMIT .....	8
<b>SCHEDULE 5 .....</b>	<b>9</b>
50 KM/H SPEED LIMIT .....	9
<b>SCHEDULE 6 .....</b>	<b>12</b>
60 KM/H SPEED LIMIT .....	12
<b>SCHEDULE 7 .....</b>	<b>18</b>
70 KM/H SPEED LIMIT .....	18
<b>SCHEDULE 8 .....</b>	<b>20</b>
80 KM/H SPEED LIMIT .....	20
<b>SCHEDULE 9 .....</b>	<b>26</b>
90 KM/H SPEED LIMIT .....	26
<b>SCHEDULE 10 .....</b>	<b>27</b>
100 KM/H SPEED LIMIT .....	27
<b>SCHEDULE 11 .....</b>	<b>28</b>
VARIABLE SPEED LIMITS (SCHOOL ZONES) .....	28
<b>MAP 1: WOODEND .....</b>	<b>30</b>
<b>MAP 2: OXFORD .....</b>	<b>31</b>
<b>MAP 3: RANGIORA EAST .....</b>	<b>32</b>
<b>MAP 4: RANGIORA WEST .....</b>	<b>33</b>
<b>MAP 5: TUAHIWI .....</b>	<b>34</b>
<b>MAP 6: ASHLEY .....</b>	<b>35</b>
<b>MAP 7: CUST .....</b>	<b>36</b>
<b>MAP 8: KAIAPOI .....</b>	<b>37</b>
<b>MAP 9: OHOKA .....</b>	<b>38</b>
<b>MAP 10: SEFTON .....</b>	<b>39</b>
<b>MAP 11: THE PINES BEACH &amp; KAIRAKI .....</b>	<b>40</b>
<b>MAP 12: WAIKUKU BEACH .....</b>	<b>41</b>
<b>MAP 13: WOODEND BEACH .....</b>	<b>42</b>
<b>MAP 14: MANDEVILLE .....</b>	<b>43</b>
<b>MAP 15: LOBURN .....</b>	<b>44</b>

MAP 16: WAIKUKU..... 45

MAP 17: WEST EYRETON ..... 46

MAP 18: LOBURN LEA..... 47

MAP 19: PEGASUS ..... 48

## INTRODUCTION

Council has designated roads within towns and urban settlements as Urban Traffic Areas as shown on the maps. These Urban Traffic Areas have speed limits of 50km/h.

Roads in the urban towns or settlements in the district not having a speed limit of 50km/h are listed separately in this register and are shown on the speed limit maps.

All roads outside of the Urban Traffic Areas have a speed limit of 100km/h unless otherwise designated. Those roads which are not 100km/h are listed separately in this register and are shown on the speed limit maps.

**All state highway roads within the district are under jurisdiction of New Zealand Transport Agency and are not included in this register.**

## **SCHEDULE 1**

### **10 KM/H SPEED LIMIT**

There are no roads or areas subject to a speed limit of 10km/h.

## **SCHEDULE 2**

### **20 KM/H SPEED LIMIT**

There are no roads or areas subject to a speed limit of 20km/h.

## SCHEDULE 3

### 30 KM/H SPEED LIMIT

The roads or areas described in this schedule or shown on the maps referenced in this schedule are declared to be subject to a speed limit of 30km/h.

Map Reference	Description	Date Speed Limit Comes Into Force	Legal Instrument
Map 2	<b>OXFORD</b>  <u>Queen Street</u> from a point generally 20m west of High Street to a point generally 20m east of Wilsons Road.	5 July 2022	Waimakariri District Council Speed Limits Bylaw 2022
Map 3 & 4	<b>RANGIORA</b>  <u>Ellis Road</u> from a point generally 20m west of Todds Road to the end of the road.	5 July 2022	Waimakariri District Council Speed Limits Bylaw 2022
Map 8	<b>KAIAPOI</b>  <u>Raven Quay</u> from the north-western end of the road to a point generally 95 m southeast of Rich Street.  All roads within the area marked on Map 8.	5 July 2022	Waimakariri District Council Speed Limits Bylaw 2022
Map 11	<b>PINES BEACH</b>  All roads within Pines Beach area marked on Map 11.	5 July 2022	Waimakariri District Council Speed Limits Bylaw 2022

Map Reference	Description	Date Speed Limit Comes Into Force	Legal Instrument
Map 11	<b>KAIRAKI BEACH</b>  All roads within Kairaki Beach area marked on Map 11.	5 July 2022	Waimakariri District Council Speed Limits Bylaw 2022
Map 12	<b>WAIKUKU BEACH</b>  All roads within Waikuku Beach easterly area marked on Map 12.	5 July 2022	Waimakariri District Council Speed Limits Bylaw 2022
Map 13	<b>WOODEND BEACH</b>  All roads within Woodend Beach area marked on Map 13.	5 July 2022	Waimakariri District Council Speed Limits Bylaw 2022



**SCHEDULE 4**

**40 KM/H SPEED LIMIT**

Map Reference	Description	Date Speed Limit Comes Into Force	Legal Instrument
Map 2	<b>OXFORD</b>  <b>Wilsons Road</b> from Church Street to Bay Road.	5 July 2022	Waimakariri District Council Speed Limits Bylaw 2022
Map 5	<b>TUAHIWI</b>  All of the roads within the Urban Traffic Area marked on Map 5.	5 July 2022	Waimakariri District Council Speed Limits Bylaw 2022

## SCHEDULE 5

### 50 KM/H SPEED LIMIT

The roads or areas described in this schedule or shown on the maps referenced in this schedule are declared to be subject to a speed limit of 50km/h.

Map Reference	Description	Date Speed Limit Comes Into Force	Legal Instrument
Map 1	<p><b>WOODEND</b></p> <p>All of the roads within the Urban Traffic Area(s) marked on Map 1, excluding those roads listed in schedules 7, 8, and 10.</p> <p><b><u>Rangiora Woodend Road</u></b> from 380 m west of Chinnerys Road to 170 m west of Bob Robertson Drive.</p> <p><b><u>Copper Beech Road</u></b> from Woodend Beach Road to the end of the formed road.</p> <p><b><u>Evergreen Drive</u></b> from the southern intersection with Copper Beech Road to the northern intersection with Copper Beech Road.</p>	<p>5 July 2022</p> <p>5 July 2022</p> <p>5 July 2022</p>	Waimakariri District Council Speed Limits Bylaw 2022
Map 2	<p><b>OXFORD</b></p> <p>All of the roads within the Urban Traffic Area(s) marked on Map 2, excluding those roads listed in schedules 3, 4, and 7.</p> <p><b><u>Weld Street</u></b> from High Street to a point generally 380 m east of High Street.</p>	5 July 2022	Waimakariri District Council Speed Limits Bylaw 2022

Map Reference	Description	Date Speed Limit Comes Into Force	Legal Instrument
Map 3 & 4	<p><b>RANGIORA</b></p> <p>All of the roads within the Urban Traffic Area(s) marked on Map 3 &amp; 4, excluding those roads listed in schedules 7 and 10.</p> <p><b>Oxford Road</b> from the edge of the UTA to a point generally 155 m west of the Lehman's Road intersection.</p>	<p>5 July 2022</p> <p>5 July 2022</p>	Waimakariri District Council Speed Limits Bylaw 2022
Map 5	<p><b>TUAHIWI</b></p> <p>All of the roads within the Urban Traffic Area(s) marked on Map 5.</p>	5 July 2022	Waimakariri District Council Speed Limits Bylaw 2022
Map 6	<p><b>ASHLEY</b></p> <p>All of the roads within the Urban Traffic Areas (incl. Max Wallace Drive) marked on Map 6.</p>	5 July 2022	Waimakariri District Council Speed Limits Bylaw 2022
Map 7	<p><b>CUST</b></p> <p>All of the roads within the area marked on Map 7.</p>	5 July 2022	Waimakariri District Council Speed Limits Bylaw 2022
Map 8	<p><b>KAIAPOI</b></p> <p>All of the roads within the Urban Traffic Area(s) marked on Map 8, excluding those roads listed in schedules 3, 7, 8, and 10.</p>	5 July 2022	Waimakariri District Council Speed Limits Bylaw 2022

Map Reference	Description	Date Speed Limit Comes Into Force	Legal Instrument
Map 10	<b>SEFTON</b>  All of the roads within the Urban Traffic Area(s) marked on Map 10, excluding those roads marked in Schedule 6.	5 July 2022	Waimakariri District Council Speed Limits Bylaw 2022
Map 12	<b>WAIKUKU BEACH</b>  All of the roads within the Urban Traffic Area(s) marked on Map 12.	5 July 2022	Waimakariri District Council Speed Limits Bylaw 2022
Map 14	<b>MANDEVILLE</b>  All of the roads within the Urban Traffic Area(s) marked on Map 14.	5 July 2022	Waimakariri District Council Speed Limits Bylaw 2022
Map 16	<b>WAIKUKU</b>  <u>MacDonalds Lane</u> from a point generally 50m west of State Highway 1 to the end of the road.	5 July 2022	Waimakariri District Council Speed Limits Bylaw 2022
Map 19	<b>PEGASUS</b>  All of the roads within the Urban Traffic Area(s) marked on Map 19, excluding those roads listed in schedule 7.	5 July 2022	Waimakariri District Council Speed Limits Bylaw 2022

## SCHEDULE 6

### 60 KM/H SPEED LIMIT

The roads or areas described in this schedule or shown on the maps referenced in this schedule are declared to be subject to a speed limit of 60km/h.

Map Reference	Description	Date Speed Limit Comes Into Force	Legal Instrument
Map 1	<p><b>WOODEND</b></p> <p><b>Fullers Road</b> from the intersection with Sandhill Road to the end of the road.</p> <p><b>Jelfs Road</b> from the intersection with Woodend Beach Road to the end of the road.</p> <p><b>Sandhill Road</b> from the intersection with Woodend Beach Road to the intersection with Main North Road.</p> <p><b>Gladstone Road</b> from a point generally 60 m east of the Petries Road intersection to the end of the road.</p>	<p>5 July 2022</p> <p>5 July 2022</p>	Waimakariri District Council Speed Limits Bylaw 2022

Map Reference	Description	Date Speed Limit Comes Into Force	Legal Instrument
Map 2	<p><b>OXFORD</b></p> <p><b><u>Sales Road</u></b> from Bay Road to Ashley Gorge Road.</p> <p><b><u>Bay Road</u></b> from a point generally 65 m north of the Church Street intersection to Sales Road.</p> <p><b><u>Woodside Road</u></b> from a point generally 230m west of Mill Road to a point generally 800m north west of Mill Road.</p> <p><b><u>Commercial Road</u></b> from Burnt Hill Road to a point generally 50 m southeast of the Cheapside Street intersection.</p> <p><b><u>Burnt Hill Road</u></b> from a point general 120 m southwest of Harewood Road to the ford.</p> <p><b><u>Somerset Drive</u></b> from Ashley Gorge Road to the end of the road corridor.</p> <p><b><u>High Street</u></b> from a point generally 50 m from the Queen Street intersection to Ashley Gorge Road.</p> <p><b><u>Ashley Gorge Road</u></b> from High Street to a point generally 730 m south of the Powells Road intersection.</p> <p><b><u>Victoria Street</u></b> from High Street to a point generally 420 m east of High Street.</p> <p><b><u>Bush Road</u></b> from Bay Road to Mill Road and Mill Road to Gammans Road.</p> <p><b><u>Mill Road</u></b> from Main Street to Bush Road (west).</p> <p><b><u>Crallans Drain Road</u></b> from Bush Road to the end of the formed road corridor.</p>	5 July 2022	Waimakariri District Council Speed Limits Bylaw 2022

Map Reference	Description	Date Speed Limit Comes Into Force	Legal Instrument
Map 3 & 4	<p><b>RANGIORA</b></p> <p><b><u>Golf Links Road (Unsealed)</u></b> from the intersection of Coldstream Road to the end of the road.</p> <p><b><u>Marsh Road (Unsealed)</u></b> from a point generally 105 m east of the Railway Road intersection to Waikoruru Road.</p> <p><b><u>Camside Road</u></b> from Boys Road to Marsh Road.</p> <p><b><u>Todds Road</u></b> from a point generally 425 m southwest of the Southbrook Road intersection to Fernside Road.</p> <p><b><u>Fernside Road</u></b> from Flaxton Road to a point generally 95 m northwest of the Todds Road intersection.</p> <p><b><u>Flaxton Road</u></b> from a point generally 85 m south of the Kingsford Smith Drive intersection to a point generally 210 m south of the Fernside Road (east) intersection.</p> <p><b><u>Camwell Park</u></b> from Flaxton road to the end of the road corridor.</p> <p><b><u>Lehmans Road</u></b> from Oxford Road to a point generally 155 m north of the Chatsworth Avenue intersection.</p> <p><b><u>Swannanoa Road</u></b> from Oxford Road to a point generally 260 m southwest of the O'Roarkes Road intersection (Fernside School zone).</p>	<p>5 July 2022</p> <p>5 July 2022</p> <p>5 July 2022</p>	Waimakariri District Council Speed Limits Bylaw 2022

Map Reference	Description	Date Speed Limit Comes Into Force	Legal Instrument
Map 5	<p><b>TUAHIWI</b></p> <p><b><u>Okaihau Road</u></b> from Tuahiwi Road to the end of the formed road corridor.</p> <p><b><u>Waikoruru Road</u></b> from Marsh Road to Tuahiwi Road.</p> <p><b><u>Topito Road</u></b> from a point generally 600 m southwest of Tuahiwi Road to the end of the formed road corridor and from Bramleys Road to the end of the formed road corridor.</p> <p><b><u>Bramleys Road</u></b> from Tuahiwi Road to a point generally 20 m southwest of the Cox Road intersection.</p> <p><b><u>Cox Road</u></b> from Bramleys Road to the end of the road.</p> <p><b><u>Power Road</u></b> from Lineside Road to the end of the formed road corridor.</p> <p><b><u>Youngs Road</u></b> from Lineside Road to the end of the formed road corridor.</p>	5 July 2022	Waimakariri District Council Speed Limits Bylaw 2022



Map Reference	Description	Date Speed Limit Comes Into Force	Legal Instrument
Map 8	<p><b>KAIAPOI</b></p> <p><b>Ohoka Road</b> from a point generally 100m west of the Island Road / Ohoka Road intersection to a point generally 280m north of Hayson Drive.</p> <p><b>Main North Road</b> from the Kaiapoi Urban Limits to Old Waimakariri Bridge.</p> <p><b>Tram Road</b> from the intersection of Main North Road to a point generally 180 m west of the eastern most intersection of Greigs Road.</p> <p><b>Neeves Road</b> entire length east of State Highway 1.</p> <p><b>Doubledays Road</b> entire length.</p> <p><b>Wrights Road</b> entire length.</p> <p><b>Giles Road</b> from Ohoka Road to a point generally 70 m south of the Neeves Road intersection.</p> <p><b>Neeves Road</b> from Giles Road to Island Road and Island Road to the end of the road (west of SH 1).</p> <p><b>Orchard Place</b> from Island Road to the end of the road.</p>	5 July 2022	Waimakariri District Council Speed Limits Bylaw 2022
Map 9	<p><b>OHOKA</b></p> <p>All of roads within Ohoka area marked on Map 9.</p>	5 July 2022	Waimakariri District Council Speed Limits Bylaw 2022
Map 10	<p><b>SEFTON</b></p> <p>All of the roads within the marked zone on Map 10.</p>	5 July 2022	Waimakariri District Council Speed Limits Bylaw 2022

Map Reference	Description	Date Speed Limit Comes Into Force	Legal Instrument
Map 12	<p><b>WAIKUKU</b></p> <p><b><u>Stokes Road</u></b> from Waikuku Beach Road to Kaiapoi Pa Road.</p> <p><b><u>Kaiapoi Pa Road</u></b> from Waikuku Beach Road to Preeces Road.</p> <p><b><u>Preeces Road</u></b> from SH 1 to Kaiapoi Pa Road.</p> <p><b><u>Wards Road</u></b> from SH 1 to the end of the formed road corridor.</p>	5 July 2022	Waimakariri District Council Speed Limits Bylaw 2022

## SCHEDULE 7

### 70 KM/H SPEED LIMIT

The roads or areas described in this schedule or shown on the maps referenced in this schedule are declared to be subject to a speed limit of 70km/h.

Map Reference	Description	Date Speed Limit Comes Into Force	Legal Instrument
Map 2	<b>OXFORD</b>  <u>Oxford Road</u> from a point generally 250m east of High Street to a point generally 400m east of Campbell Lane.	5 July 2022	Waimakariri District Council Speed Limits Bylaw 2022
Map 8	<b>KAIAPOI</b>  <u>Heywards Road</u> from a point generally 20m south west of Tram Road to a point generally 20m north of Mabers Road.  <u>Beach Road</u> from a point generally 590m east of Williams Street to a point generally at the eastern limit of the Beach Grove development.	5 July 2022	Waimakariri District Council Speed Limits Bylaw 2022
Map 14	<b>MANDEVILLE</b>  All of the roads within Mandeville area(s) marked on Map 14, excluding those roads listed in schedule 8.	5 July 2022	Waimakariri District Council Speed Limits Bylaw 2022
Map 16	<b>WAIKUKU</b>  <u>Geisha Road</u> from a point generally 50m east of Main North Road (SH 1) to the end of the road.	5 July 2022	Waimakariri District Council Speed Limits Bylaw 2022
Map 18	<b>LOBURN LEA</b>  All of the roads within Loburn Lea area marked on Map 18.	5 July 2022	Waimakariri District Council Speed Limits Bylaw 2022

Map Reference	Description	Date Speed Limit Comes Into Force	Legal Instrument
Map 19	<b>PEGASUS</b>  <u>Pegasus Boulevard</u> from a point generally 50m east of Main North Road (SH1) to a point generally 50m from Infinity Drive.	5 July 2022	Waimakariri District Council Speed Limits Bylaw 2022

## SCHEDULE 8

### 80 KM/H SPEED LIMIT

The roads or areas described in this schedule or shown on the maps referenced in this schedule are declared to be subject to a speed limit of 80km/h.

Map Reference	Description	Date Speed Limit Comes Into Force	Legal Instrument
Map 1 & 13	<p><b>WOODEND &amp; WOODEND BEACH</b></p> <p><b>Woodend Beach Road</b> from a point generally 150m south of Main North Road to a point generally 180m west of Stalkers Road.</p> <p><b>Gressons Road</b> Entire length</p> <p><b>Marchmont Road</b> entire length.</p>	5 July 2022	Waimakariri District Council Speed Limits Bylaw 2022
Map 2	<p><b>OXFORD</b></p> <p><b>Weld Street</b> from a point generally 380 m east of High Street to a point generally 150m south east of Powells Road.</p>	5 July 2022	Waimakariri District Council Speed Limits Bylaw 2022

Map 3 & 4	<p><b>RANGIORA</b></p> <p><b><u>Boys Road / South Belt</u></b> from a point generally at the intersection with Newnham Street to a point generally 652m east of Newnham Street.</p> <p><b><u>Cones Road</u></b> from a point generally at the intersection with River Road to a point generally 100m north of Fawcetts Road.</p> <p><b><u>Millton Ave</u></b> from a point generally 130m north west of River Road to the intersection with Cones Road.</p> <p><b><u>Townsend Road</u></b> from a point generally 150m south of South Belt to a point generally 20m north of Fernside Road.</p> <p><b><u>Northbrook Road</u></b> from a point generally 270m east of Sparks Lane to the Boys road Intersection.</p> <p><b><u>Kippenberger Avenue</u></b> from a point generally 150m east of Devlin Avenue to a point generally 500m east of Golf Links Road.</p> <p><b><u>Lehmans Road</u></b> from a point generally 155 m north of the Chatsworth Avenue intersection to the intersection with River Road.</p> <p><b><u>River Road</u></b> from the intersection with Lehmans Road to a point generally 30m west of the intersection with West Belt.</p> <p><b><u>Rangiora Woodend Road</u></b> from intersection with Kippenberger Avenue to 170 m west of Bob Robertson Drive.</p> <p><b><u>Golf Links Road</u></b> from intersection with Coldstream Road to the intersection with Kippenberger Avenue.</p> <p><b><u>Coldstream Road</u></b> from intersection with Smarts Road to a point generally east of the sports facility.</p> <p><b><u>Smarts Road</u></b> entire length.</p>	5 July 2022	Waimakariri District Council Speed Limits Bylaw 2022
-----------	---	-------------	--

Map Reference	Description	Date Speed Limit Comes Into Force	Legal Instrument
	<p><b><u>Flaxton Road</u></b> from a point generally 210 m south of the Fernside Road (east) intersection to Skewbridge Road.</p> <p><b><u>Fernside Road (east)</u></b> from Flaxton Road to Lineside Road.</p> <p><b><u>Fernside Road</u></b> from a point generally 95 m northwest of the Todds Road intersection to Plaskett Road.</p> <p><b><u>Plaskett Road</u></b> from Oxford Road to a point generally 75 m south of Fernside Road.</p> <p><b><u>Lehmans Road</u></b> from Oxford Road to Fernside Road.</p> <p><b><u>Johns Road</u></b> from a point generally 550 m west of Acacia Ave to Swannanoa Road.</p> <p><b><u>Mt Thomas Road</u></b> from Oxford Road to Johns Road.</p> <p><b><u>O'Roarkes Road</u></b> from Swannanoa Road to Johns Road.</p> <p><b><u>Swannanoa Road</u></b> from a point generally 260 m southwest of O'Roarkes Road to a point generally 200 m southwest of Johns Road.</p> <p><b><u>Oxford Road</u></b> from a point generally 150 m west of the Lehmans Road intersection to a point generally 335 m west of the Swannanoa Road intersection.</p>	5 July 2022	

Map Reference	Description	Date Speed Limit Comes Into Force	Legal Instrument
Map 5	<p><b>TUAHIWI</b></p> <p><b><u>Harris Road</u></b> entire length</p> <p><b><u>Topito Road</u></b> from the intersection with Tuahiwi Road to a point generally 600m south west of Tuahiwi Road.</p> <p><b><u>Tuahiwi Road</u></b> from Rangiora Woodend Road to a point generally 130m south west of Greens Road, and from a point generally 100m north of Bramleys Road to a point generally 50m north of Church Bush Road.</p> <p><b><u>Turiwhaia Road</u></b> entire length.</p> <p><b><u>Greens Road</u></b> entire length.</p> <p><b><u>Te Pouapatuki Road</u></b> entire length.</p> <p><b><u>Church Bush Road</u></b> entire length.</p> <p><b><u>Pa Road</u></b> entire length.</p> <p><b><u>Revells Road</u></b> entire length.</p>	5 July 2022	Waimakariri District Council Speed Limits Bylaw 2022
Map 6	<p><b>ASHLEY</b></p> <p><b><u>Fawcetts Road</u></b> from a point generally 30m east of Cones Road to a point generally 50m east of High Street.</p>	5 July 2022	Waimakariri District Council Speed Limits Bylaw 2022
Map 7	<p><b>CUST</b></p> <p><b><u>Cust Road</u></b> from a point generally 190 m east of Swamp Road to a point generally 25 m east of Tallots Road, and from a point generally 535 m west of Mill Road to a point generally 85 m west of Tippings Road.</p>	5 July 2022	Waimakariri District Council Speed Limits Bylaw 2022
Map 8	<p><b>KAIAPOI</b></p> <p><b><u>Smith Street</u></b> from a point generally 160m west of Charles Street to a point generally 100m north west of Tunas Street.</p> <p><b><u>Williams Street</u></b> from a point generally 470m north of Dale</p>	5 July 2022	Waimakariri District Council Speed Limits Bylaw 2022



Map Reference	Description	Date Speed Limit Comes Into Force	Legal Instrument
	<p>Street to a point generally 140m south east of State Highway 1.</p> <p><b><u>Giles Road</u></b> from a point generally 70 m south of the Neeves Road intersection to Tram Road.</p> <p><b><u>Island Road</u></b> from the Urban Traffic Area to Tram Road.</p> <p><b><u>William Coup Road</u></b> from Island Road to the end of the road.</p> <p><b><u>Tram Road</u></b> from 180 m west of the eastern most intersection of Greigs Road to a point generally 200 m west of the South Eyre Road intersection.</p> <p><b><u>Skewbridge Road / Ohoka Road</u></b> from Flaxton Road to a point generally 280 m north of Hayson Drive.</p>	5 July 2022	
Map 9	<p><b>OHOKA</b></p> <p><b><u>Threlkelds Road</u></b> from Skewbridge Road to Mill Road.</p> <p><b><u>Mill Road</u></b> from a point generally 55 m east of Threlkelds Road to Ohoka Road.</p> <p><b><u>Millbrook Lane</u></b> from Mill Road to the end of the road corridor.</p> <p><b><u>Millcroft Lane</u></b> from Mill Road to the end of the road corridor.</p>	5 July 2022	Waimakariri District Council Speed Limits Bylaw 2022
Map 12 & 16	<p><b>WAIKUKU &amp; WAIKUKU BEACH</b></p> <p><b><u>Waikuku Beach Road</u></b> from the intersection with Main North Road (SH1) to a point generally 330m south west of Kings Avenue.</p> <p><b><u>Tulls Road</u></b> entire length.</p>	5 July 2022	Waimakariri District Council Speed Limits Bylaw 2022
Map 14	<p><b>MANDEVILLE</b></p> <p><b><u>Mandeville Road</u></b> from a point generally at the intersection with Tram Road to a point generally 70m south of Ohoka Meadows Drive.</p>	5 July 2022	Waimakariri District Council Speed Limits Bylaw 2022

Map Reference	Description	Date Speed Limit Comes Into Force	Legal Instrument
	<p><b>McHughs Road</b> from a point generally at the intersection with Tram Road to a point generally 50m north of North Eyre Road.</p> <p><b>Tram Road</b> from a point generally 500m East of McHughs Road to a point 300m West of McHughs Road.</p> <p><b>Wards Road</b> from a point generally at the intersection with Bradleys Road to a point generally 300m north of Makybe Drive.</p> <p><b>Dawsons Road</b> from a point generally at the intersection with Wards Road to a point generally 800m north of Wards Road.</p> <p><b>Bradleys Road</b> from a point generally at the intersection with Tram Road to a point generally 400m north of Modena Place.</p>	5 July 2022	
Map 15	<p><b>LOBURN</b></p> <p><b>Hodgsons Road</b> from the intersection with Loburn Whiterock Road to 1km west of Loburn Whiterock Road.</p> <p><b>Loburn Whiterock Road</b> from a point generally 70m south of Barkers Road to a point generally 30m north of Hodgsons Road.</p>	5 July 2022	Waimakariri District Council Speed Limits Bylaw 2022
Map 17	<p><b>WEST EYRETON</b></p> <p><b>Downs Road</b> from the intersection with North Eyre Road to a point generally 500m south of North Eyre Road.</p> <p><b>Earlys Road</b> from the intersection with North Eyre Road to a point generally 550m north of North Eyre Road.</p> <p><b>North Eyre Road</b> from a point generally 200m east of Earlys Road to a point generally 200m west of School Road.</p> <p><b>School Road</b> from a point generally 100m north of North Eyre Road to a point generally 300m south of North Eyre Road.</p>	5 July 2022	Waimakariri District Council Speed Limits Bylaw 2022

## **SCHEDULE 9**

### **90 KM/H SPEED LIMIT**

There are no roads or areas subject to a speed limit of 90km/h.

## SCHEDULE 10

### 100 KM/H SPEED LIMIT

All other roads within the Waimakariri District not mentioned in the schedules 1 to 10 have a speed limit of 100km/h.

The roads or areas described in this schedule or shown on the maps referenced in this schedule are declared to be outside of the listed Urban Traffic Areas and subject to a speed limit of 100km/h.

Map Reference	Description	Date Speed Limit Comes Into Force	Legal Instrument
Map 1	<b>WOODEND</b>  <u>Judsons Road</u> from the intersection with Woodend Beach Road to end of the road.	5 July 2022	Waimakariri District Council Speed Limits Bylaw 2022
Map 3 & 4	<b>RANGIORA</b>  <u>East Belt</u> from a point generally 50m north of Coldstream Road to a point generally 440m north of Coldstream Road.	5 July 2022	Waimakariri District Council Speed Limits Bylaw 2022

## SCHEDULE 11

### VARIABLE SPEED LIMITS (SCHOOL ZONES)

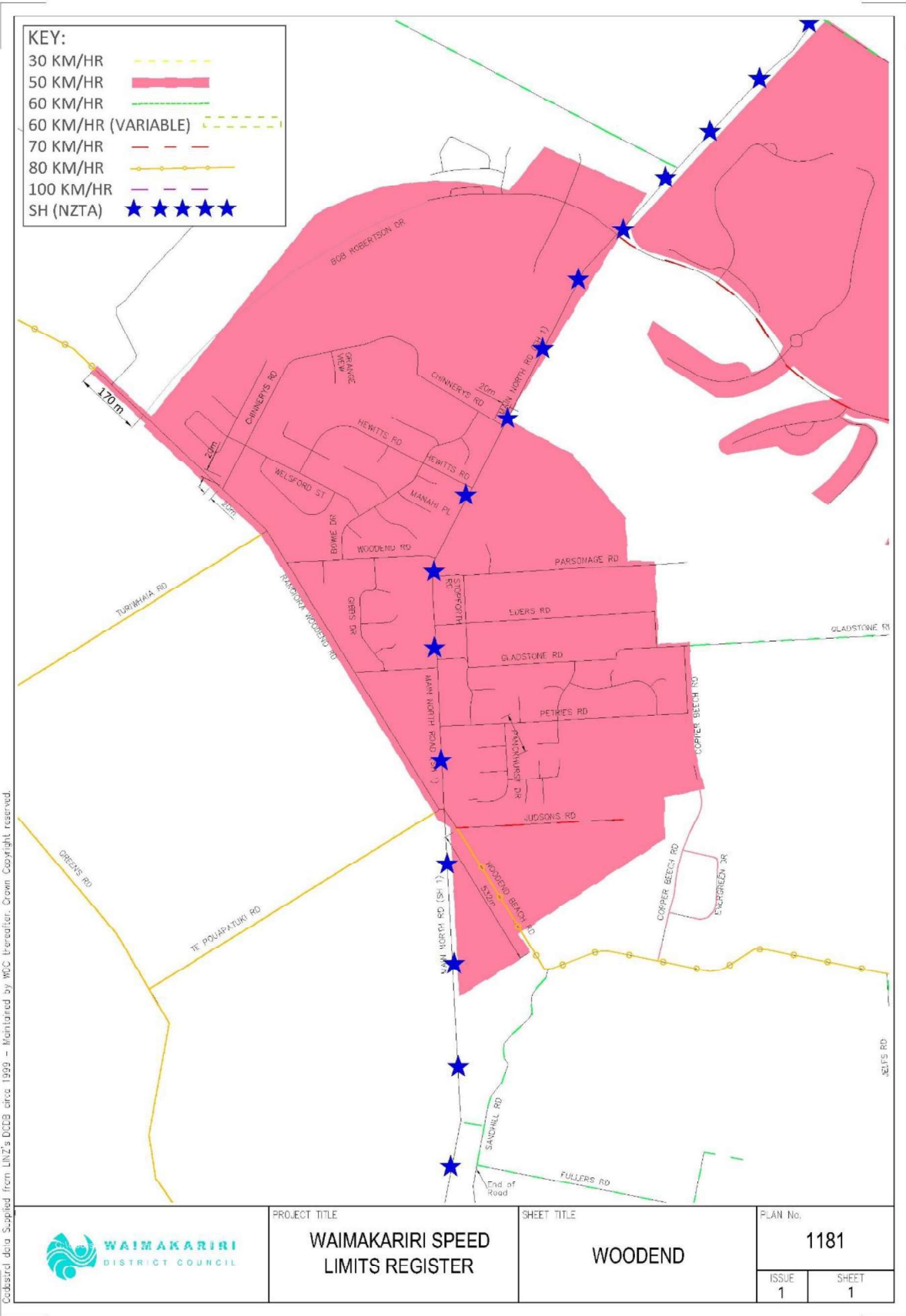
The roads or areas described in this register and as indicated on maps referenced to in this register are declared to be subject to a variable speed limit at defined periods of the day to coincide with school activity.

<http://www.nzta.govt.nz/safety/partners/speed-and-infrastructure/speed-limits/national-speed-limits/>

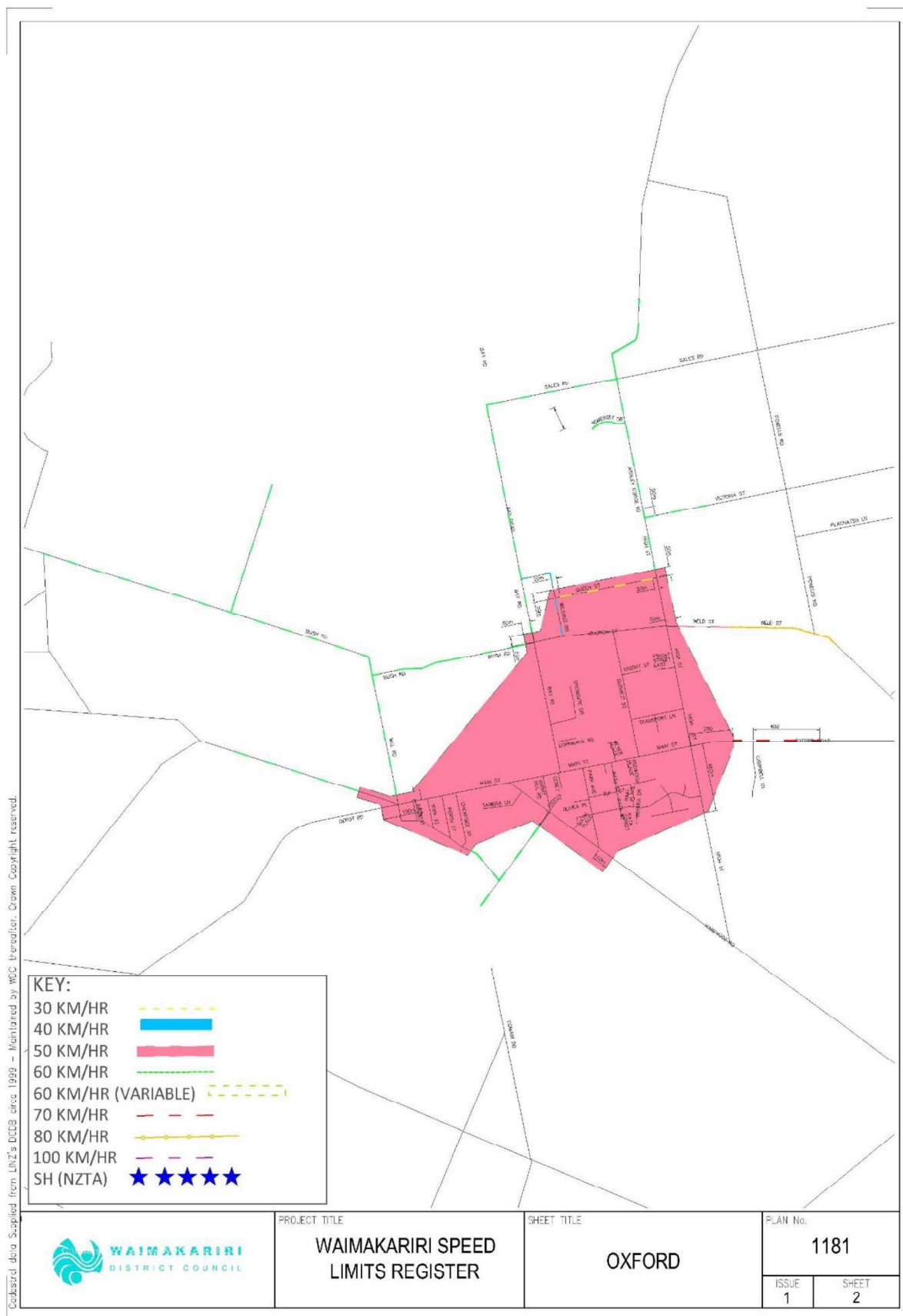
Map Reference	Description	Variable Speed Limit	Date Speed Limit Comes Into Force	Legal Instrument										
Map 6	<b><u>Fawcetts Road</u></b> Outside Ashley School from a point generally 140 m west of Boundary Road to a point generally 60 m east of Marshmans Road.	<b>60 km/h variable speed limit</b> for 35 minutes before the start of school until the start of school on any school day, 20 minutes at the end of school (beginning no earlier than five minutes before the end of school) on any school day, and for up to 10 minutes at any other times when vehicles are entering or leaving the school grounds or there is pedestrian or cycle activity on the road outside the school.	5 July 2022	Waimakariri District Council Speed Limits Bylaw 2022										
Map 8	<b><u>Williams Street</u></b> Outside Kaiapoi North School from a point generally 100m north of Smith Street to a point generally 100m south of Dale Street.	<b>40 km/h variable speed limit</b> between the hours of 8:25am – 9:00am and 2:55pm – 3:15pm on any school day, and for up to ten minutes at any other times when vehicles are entering or leaving the school grounds or there is pedestrian or cycle activity on the road outside the school.	5 July 2022	Waimakariri District Council Speed Limits Bylaw 2022										
Map 8	<b><u>Ohoka Road</u></b> Outside Kaiapoi High School from a point generally 130m west of Otaki Street to a point generally 170m east of Otaki Street.	<div> <b>40 km/h variable speed limit</b>                      between the hours of:                     <table> <tr> <td>Monday</td> <td>8:05am – 8:40am and 2:55pm – 3:15pm</td> </tr> <tr> <td>Tuesday</td> <td>8:05am – 8:40am and 2:55pm – 3:15pm</td> </tr> <tr> <td>Wednesday</td> <td>8:05am – 8:40am and 2:20pm – 2:40pm</td> </tr> <tr> <td>Thursday</td> <td>8:25am – 9:00am and 2:55pm – 3:15pm</td> </tr> <tr> <td>Friday</td> <td>8:05am – 8:40am and 2:55pm – 3:15pm</td> </tr> </table> </div> on any school day, and for up to ten minutes at any other times when vehicles are entering or leaving the school grounds or there is pedestrian or cycle activity on the road outside the school.	Monday	8:05am – 8:40am and 2:55pm – 3:15pm	Tuesday	8:05am – 8:40am and 2:55pm – 3:15pm	Wednesday	8:05am – 8:40am and 2:20pm – 2:40pm	Thursday	8:25am – 9:00am and 2:55pm – 3:15pm	Friday	8:05am – 8:40am and 2:55pm – 3:15pm	5 July 2022	Waimakariri District Council Speed Limits Bylaw 2022
Monday	8:05am – 8:40am and 2:55pm – 3:15pm													
Tuesday	8:05am – 8:40am and 2:55pm – 3:15pm													
Wednesday	8:05am – 8:40am and 2:20pm – 2:40pm													
Thursday	8:25am – 9:00am and 2:55pm – 3:15pm													
Friday	8:05am – 8:40am and 2:55pm – 3:15pm													

Map 14	<p><b><u>Tram Road</u></b></p> <p>Outside Swannanoa School from a point generally 348m east of Two Chain Road to a point generally 780 east of Two Chain Rd.</p>	<p><b>60 km/h variable speed limit</b></p> <p>between the hours of 8:35am – 9:10am and 2:50pm – 3:35pm on any school day, and for up to ten minutes at any other times when vehicles are entering or leaving the school grounds or there is pedestrian or cycle activity on the road outside the school.</p>	5 July 2022	Waimakariri District Council Speed Limits Bylaw 2022
Map 15	<p><b><u>Hodgsons Road</u></b></p> <p>Outside Loburn School from a point generally 390 m west of Loburn Whiterock road to a point generally 910 m west of Loburn Whiterock Road.</p>	<p><b>60 km/h variable speed limit</b></p> <p>for 35 minutes before the start of school until the start of school on any school day, 20 minutes at the end of school (beginning no earlier than five minutes before the end of school) on any school day, and for up to 10 minutes at any other times when vehicles are entering or leaving the school grounds or there is pedestrian or cycle activity on the road outside the school.</p>	5 July 2022	Waimakariri District Council Speed Limits Bylaw 2022

MAP 1: WOODEND

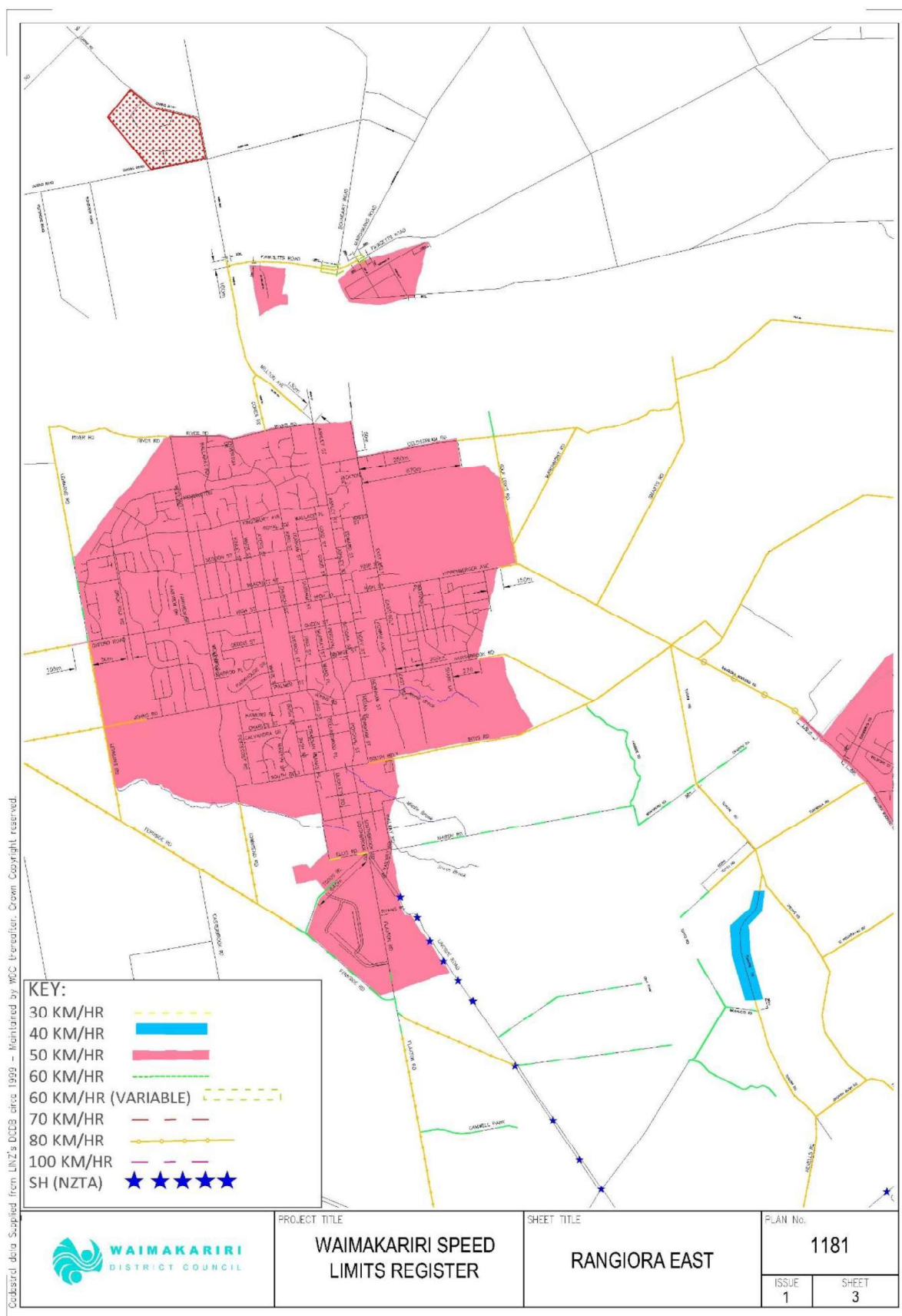


## MAP 2: OXFORD

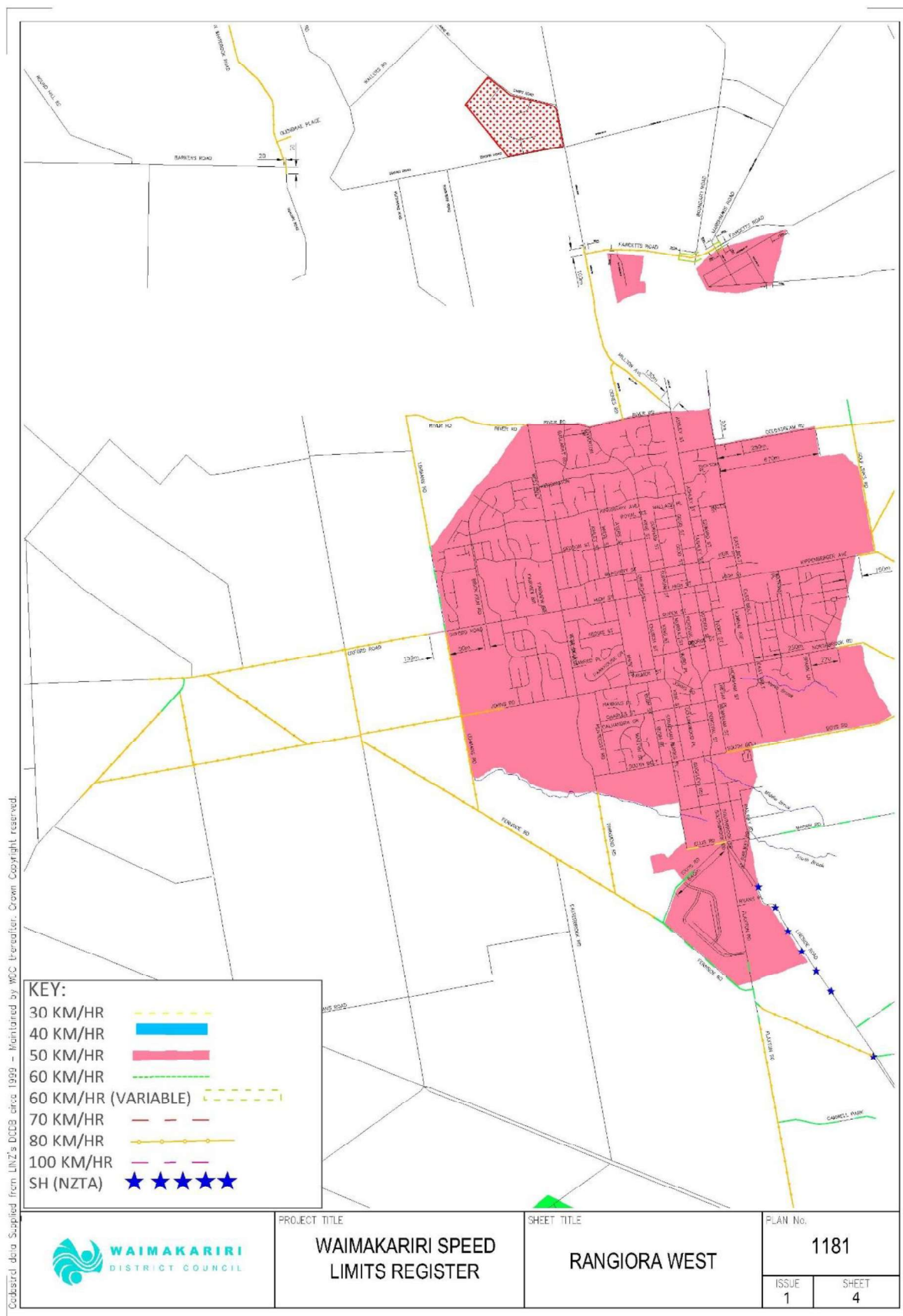




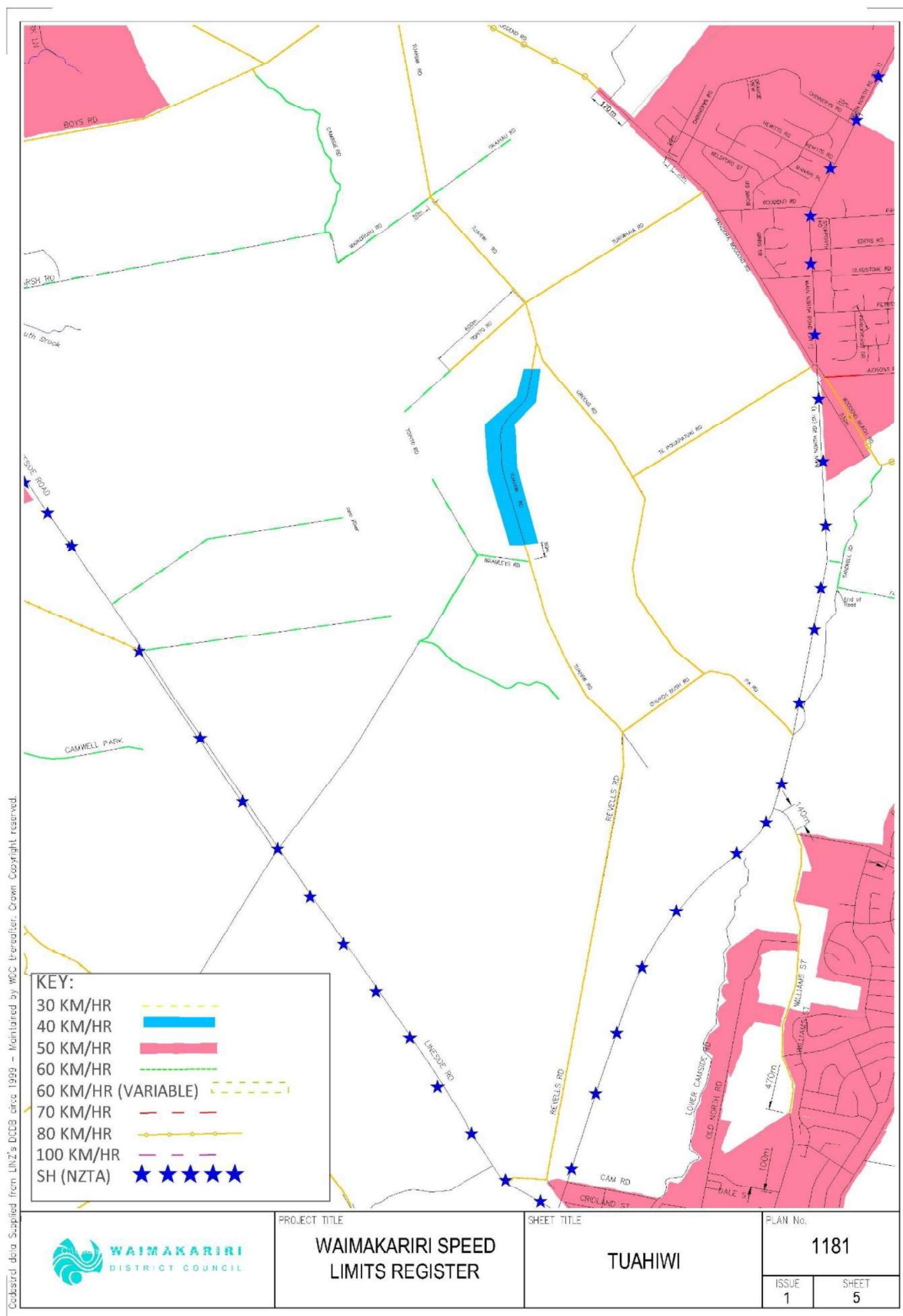
## MAP 3: RANGIORA EAST



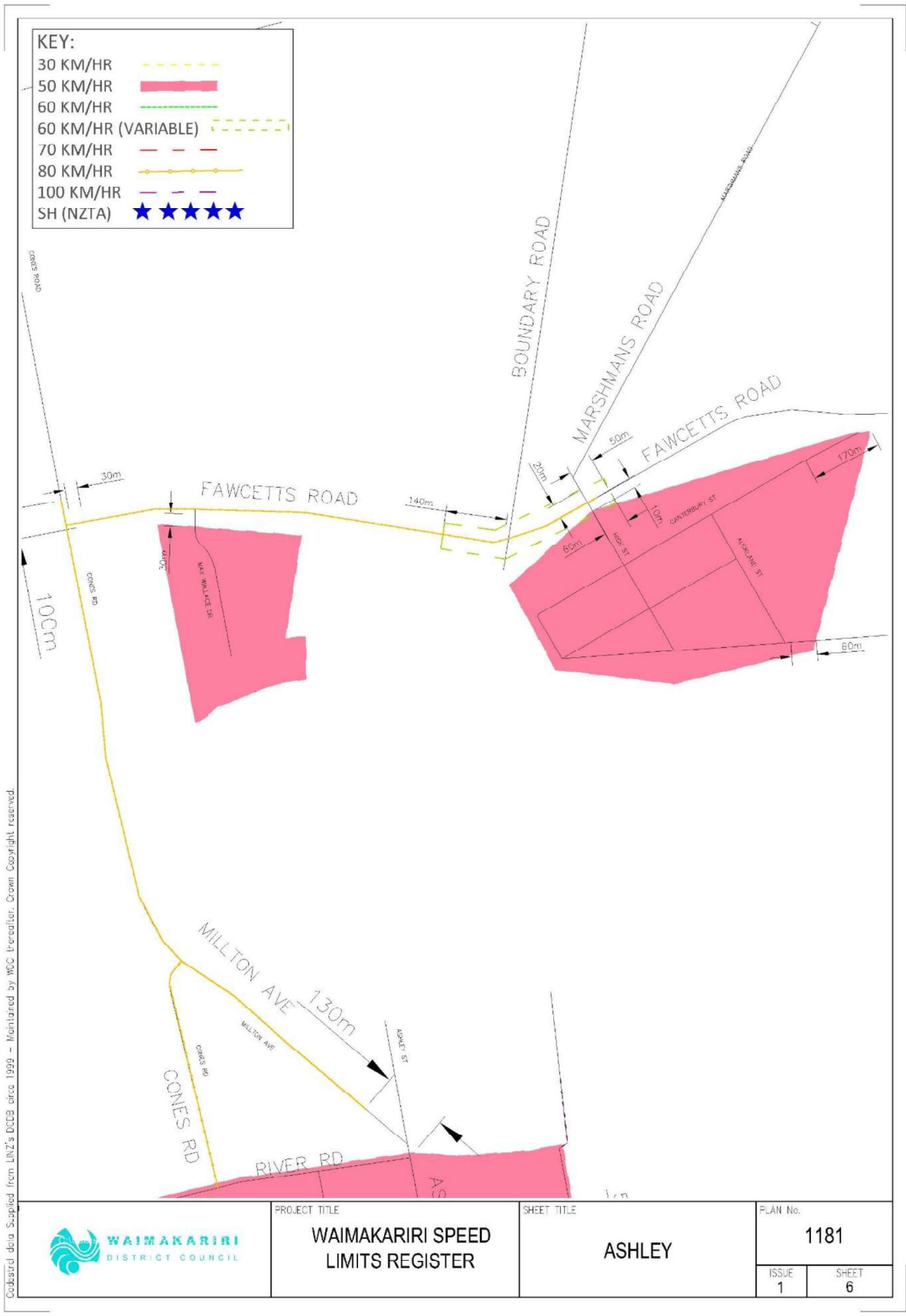
## MAP 4: RANGIORA WEST



## MAP 5: TUAHIWI

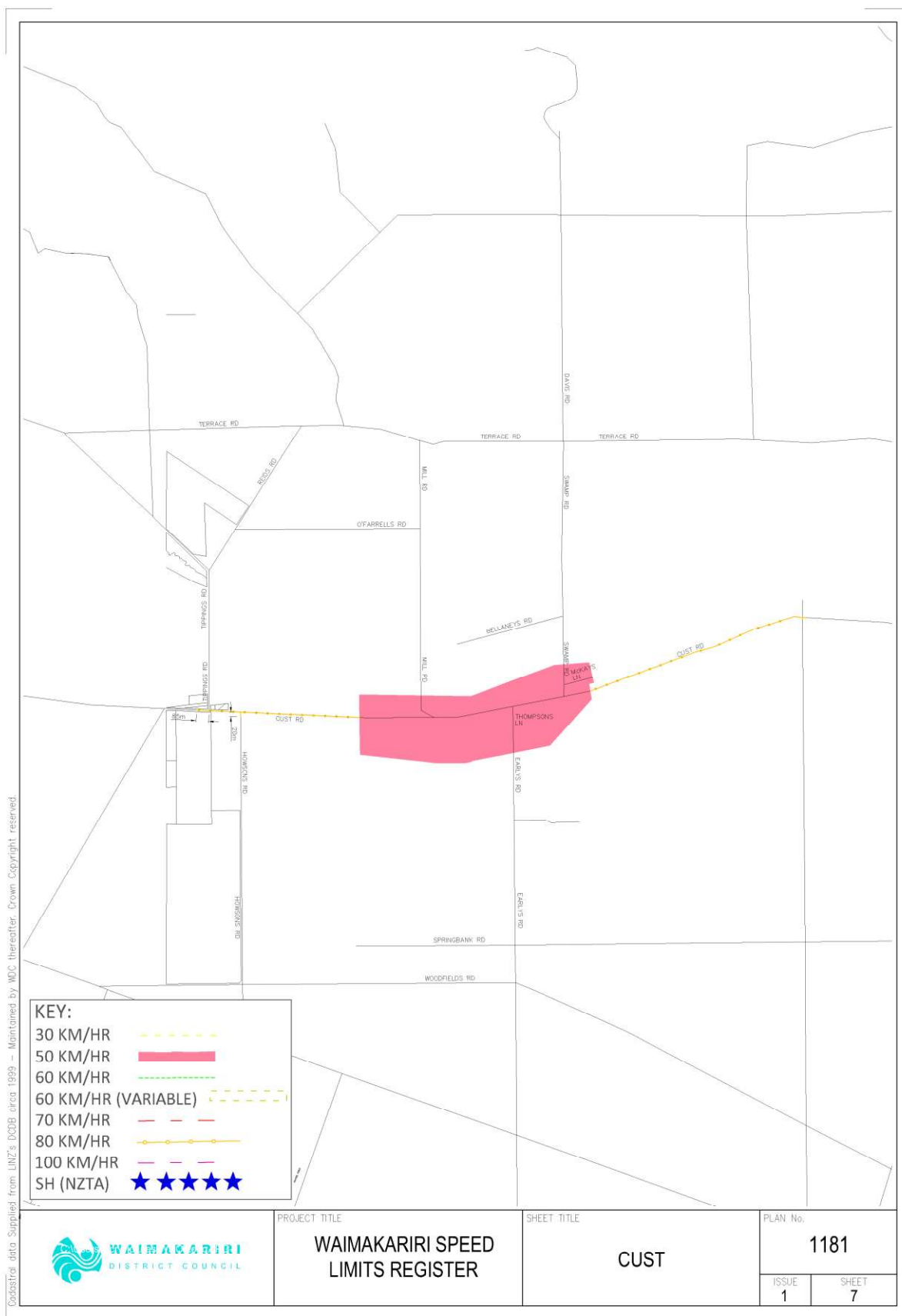


MAP 6: ASHLEY

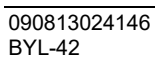




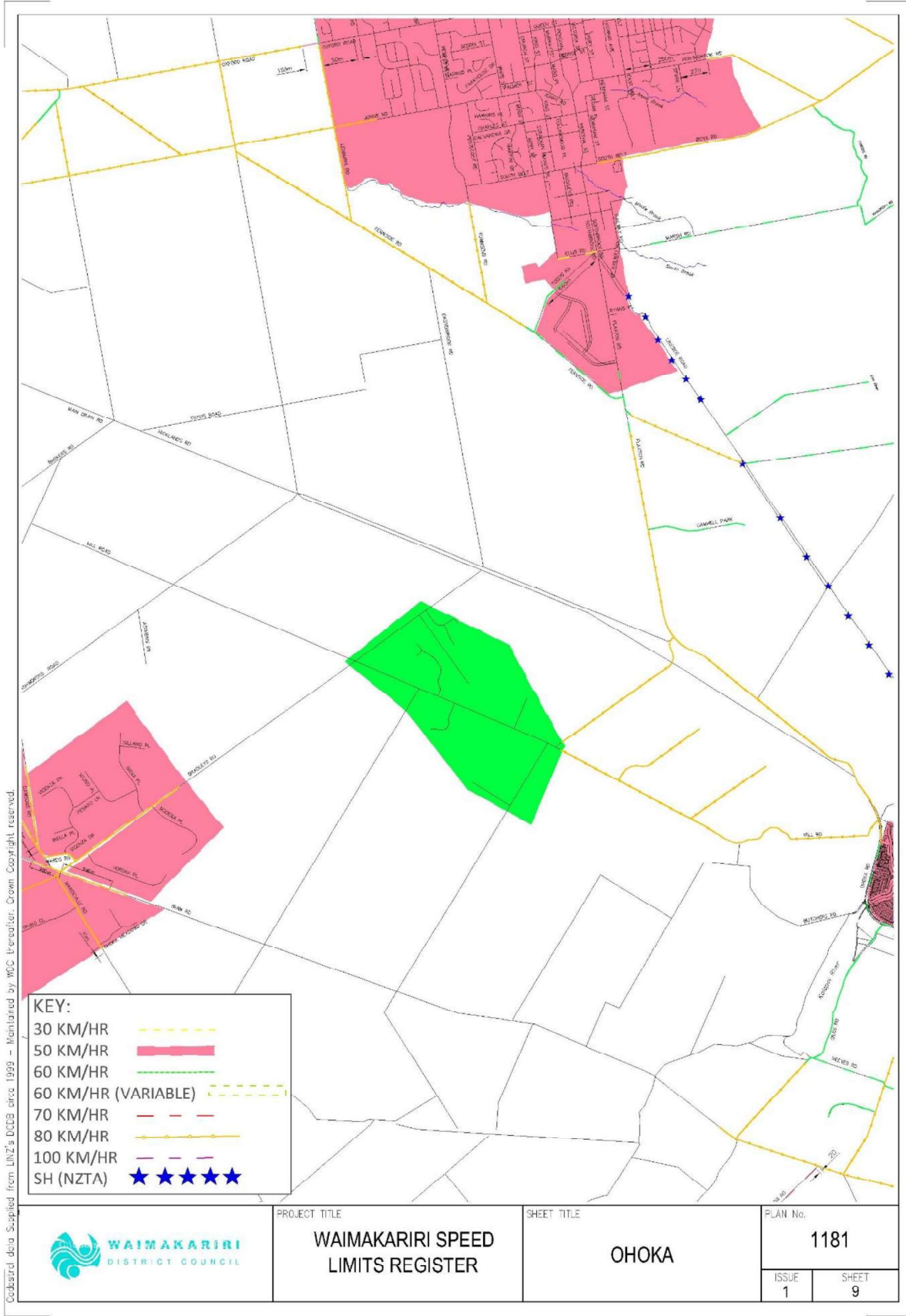
## MAP 7: CUST



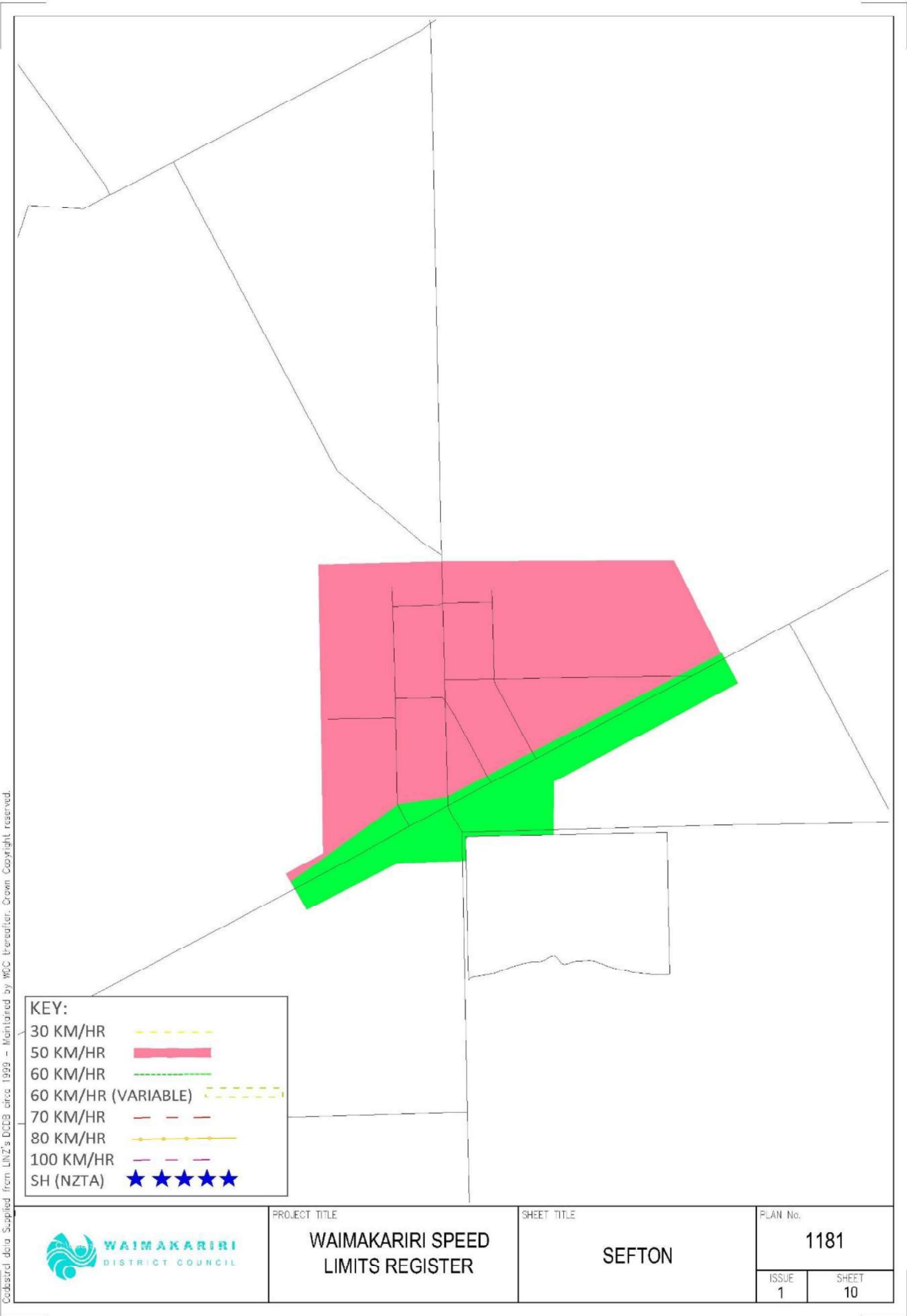
Bylaw revoked by Council Resolution 6 September 2022  
Refer to the National Speed Limit Register  
<https://www.nzta.govt.nz/safety/partners/speed-and-infrastructure/speed-limits/national-speed-limit-register/>



MAP 9: OHOKA

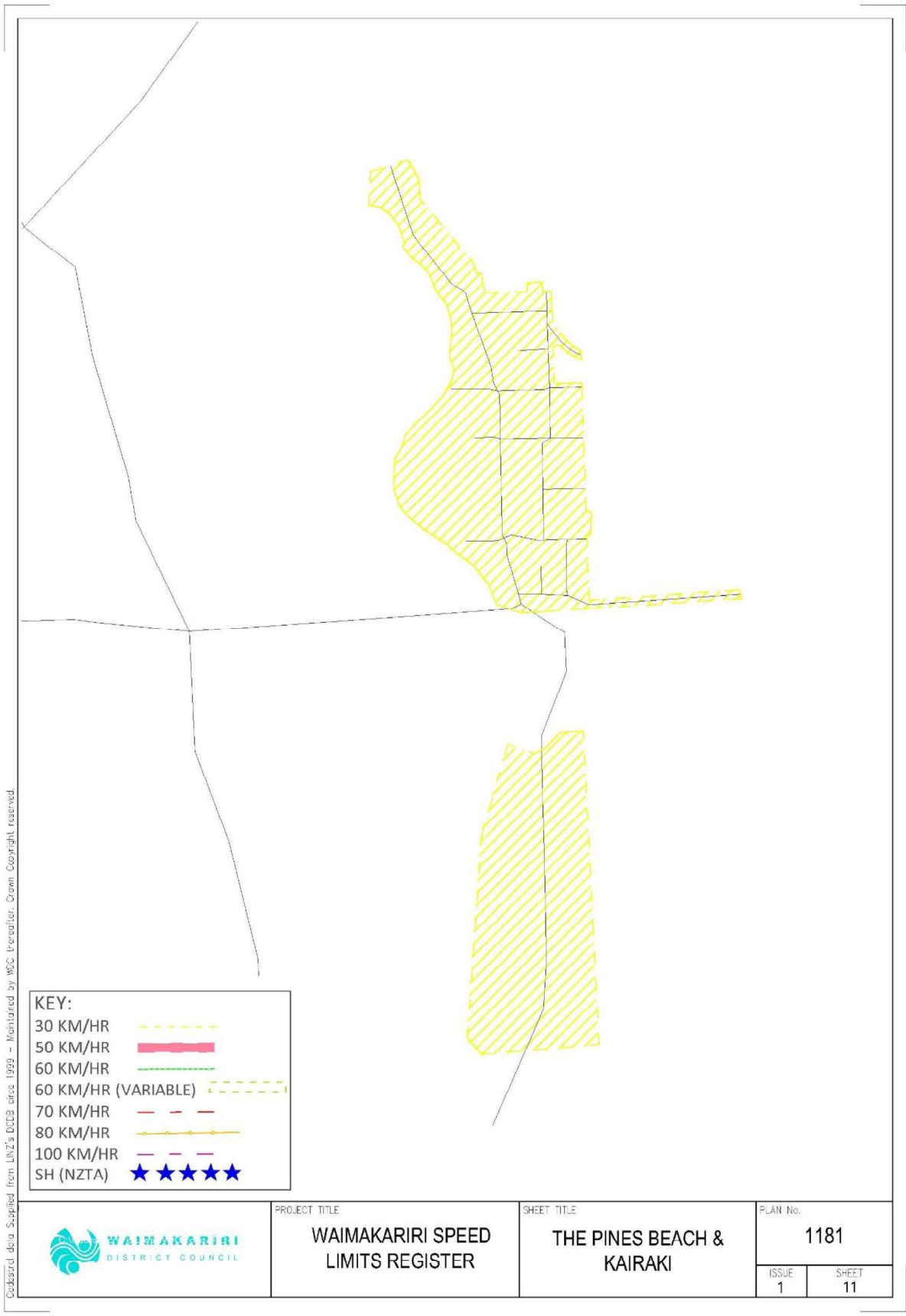


MAP 10: SEFTON

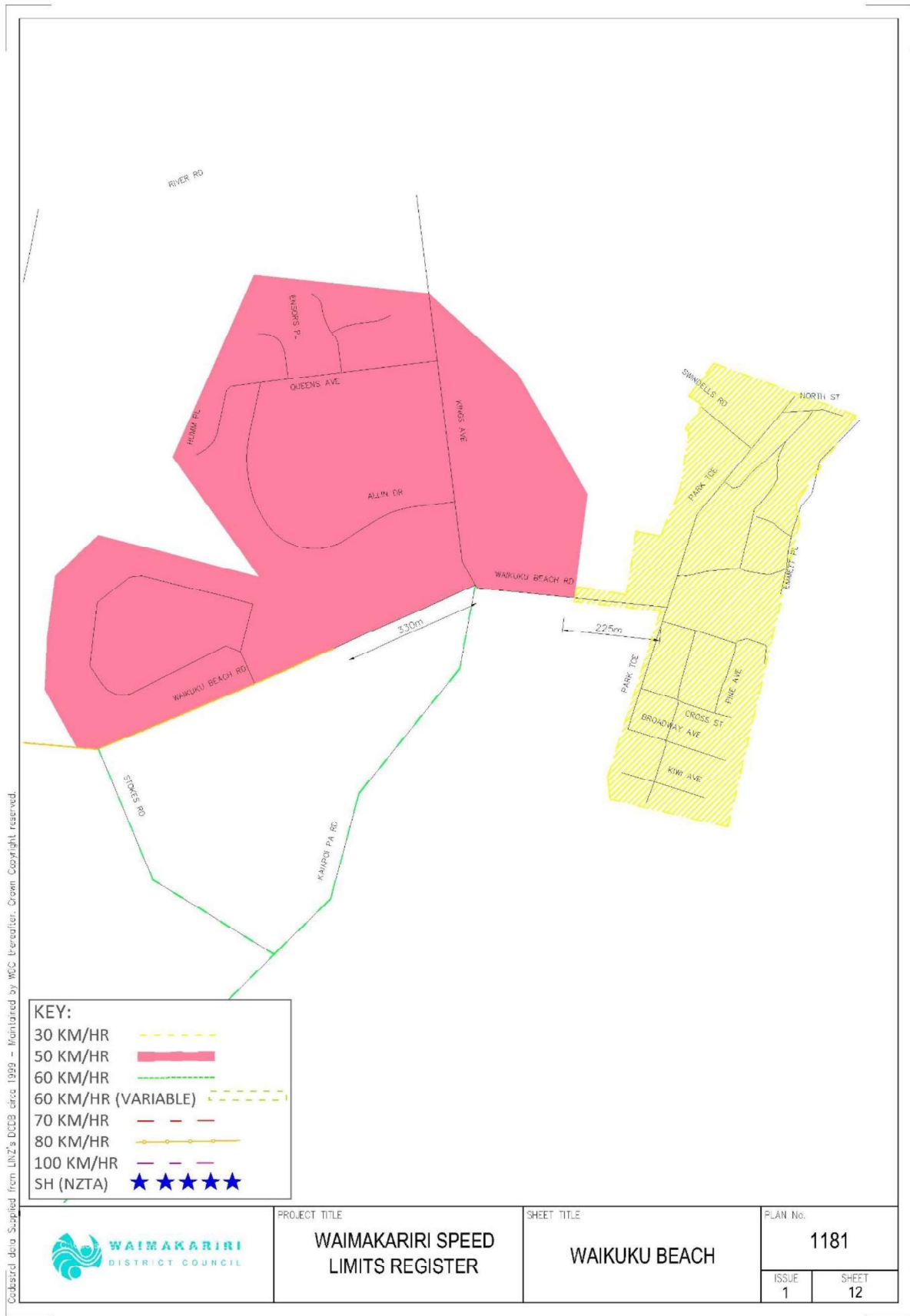




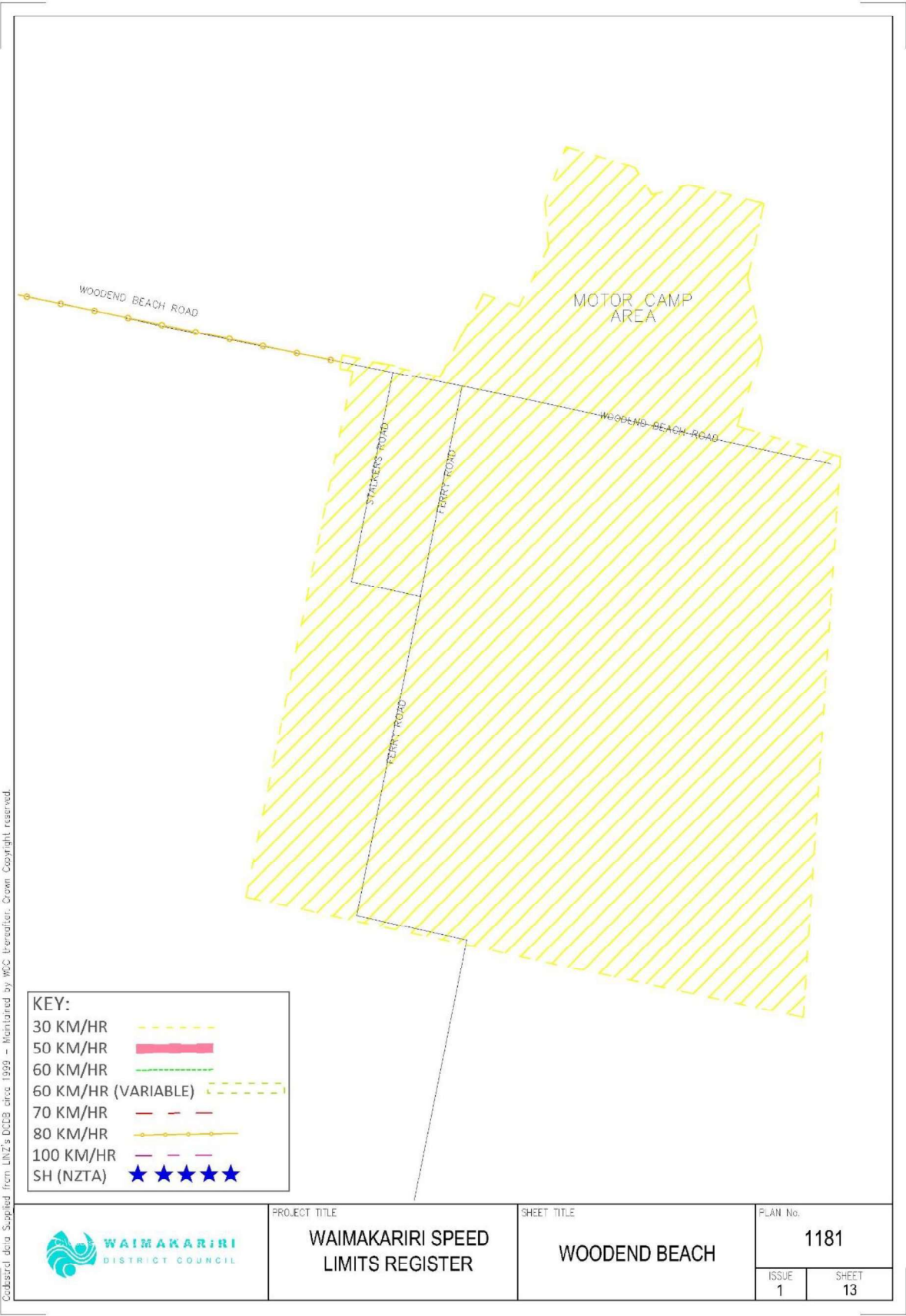
MAP 11: THE PINES BEACH & KAIRAKI



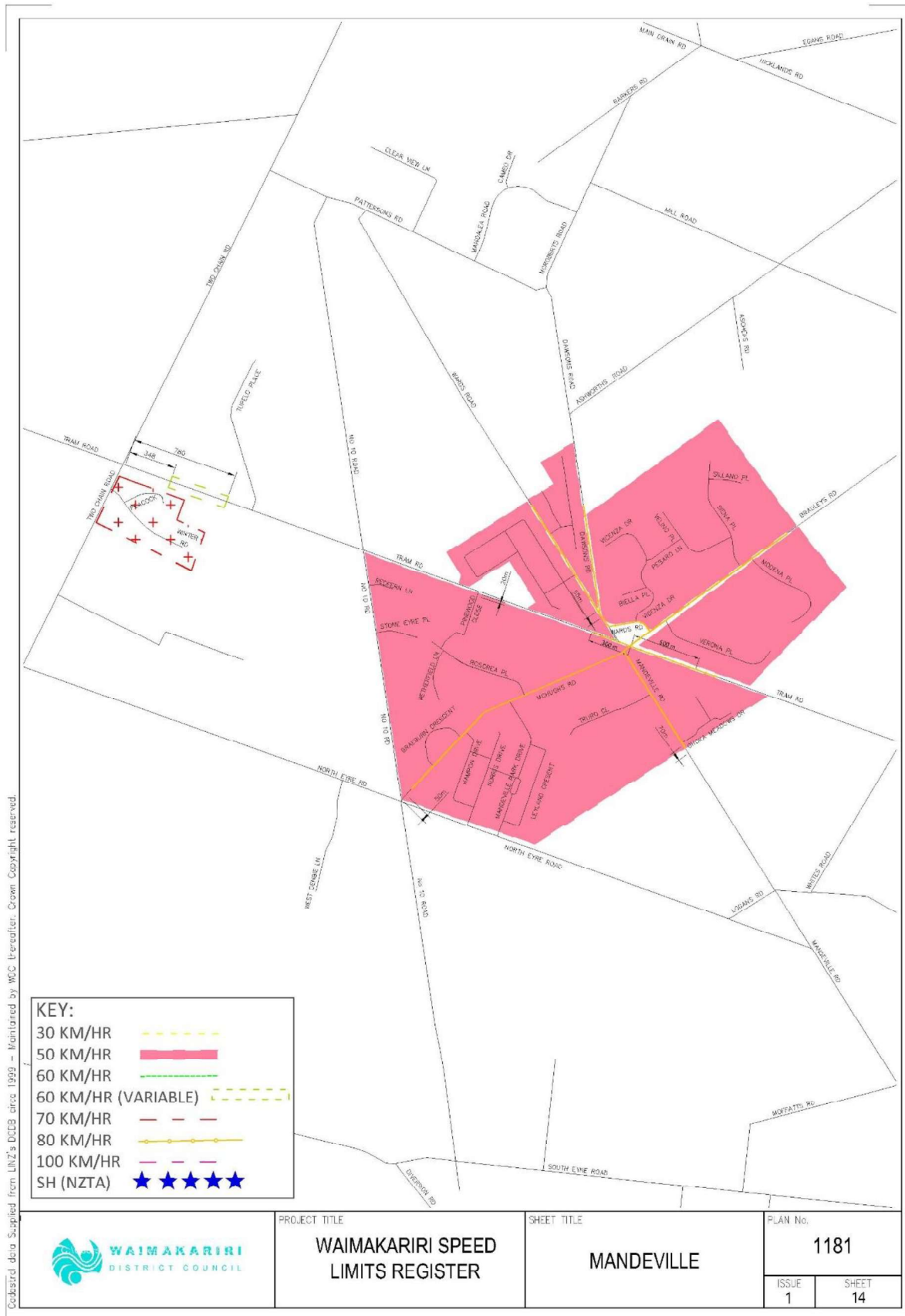
**MAP 12: WAIKUKU BEACH**



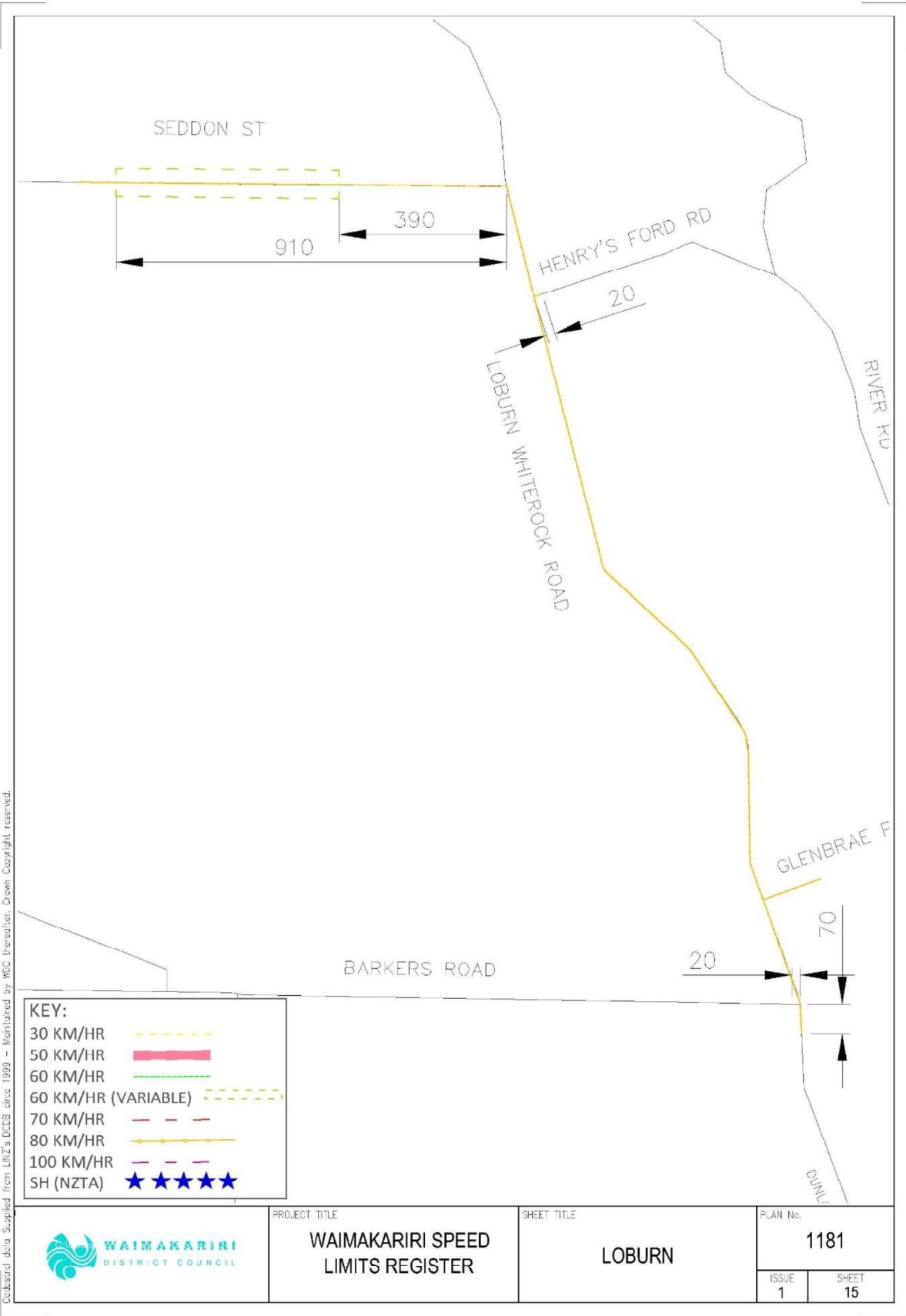
MAP 13: WOODEND BEACH



## MAP 14: MANDEVILLE

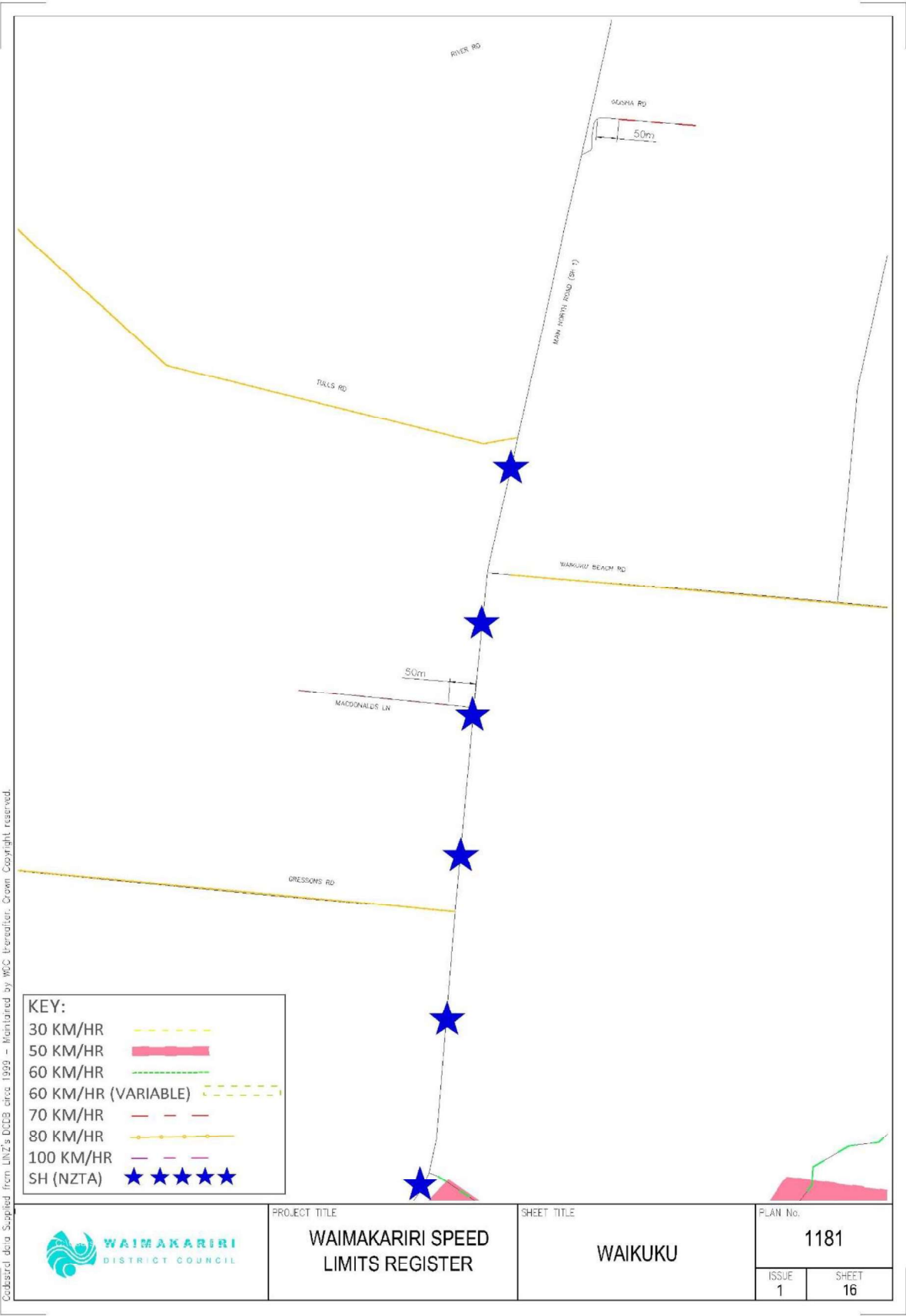


MAP 15: LOBURN

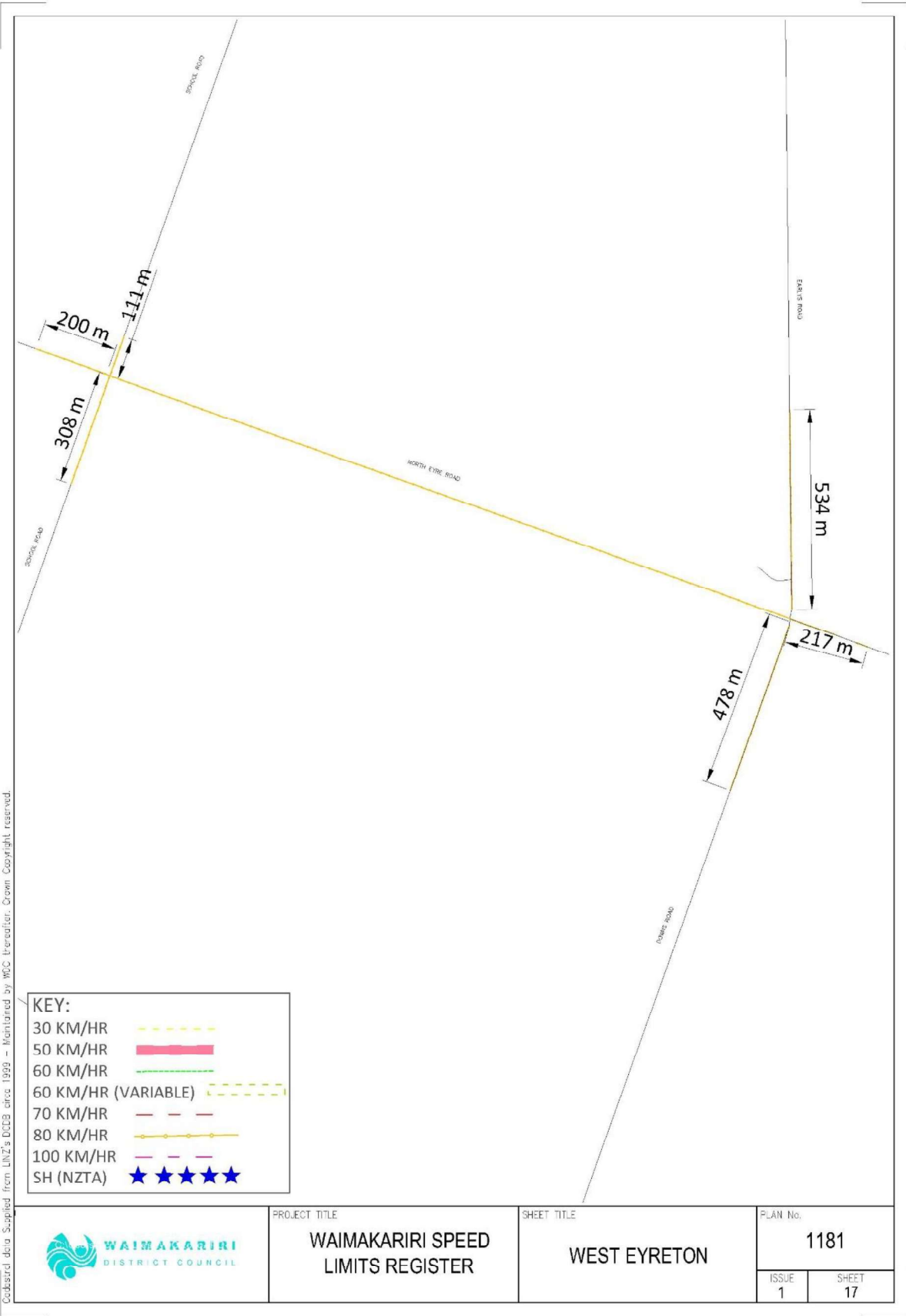




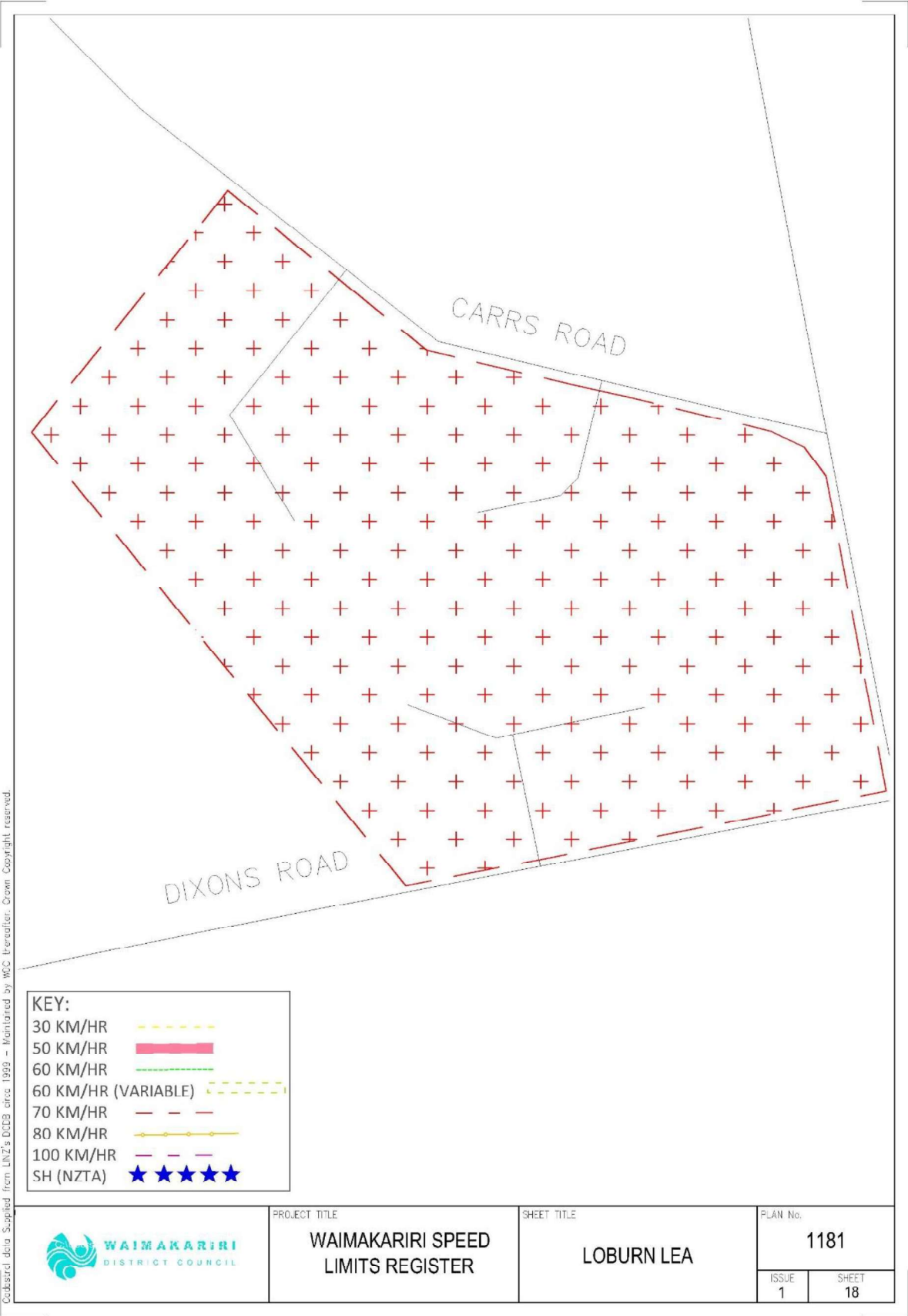
MAP 16: WAIKUKU



MAP 17: WEST EYRETON



MAP 18: LOBURN LEA





MAP 19: PEGASUS

