

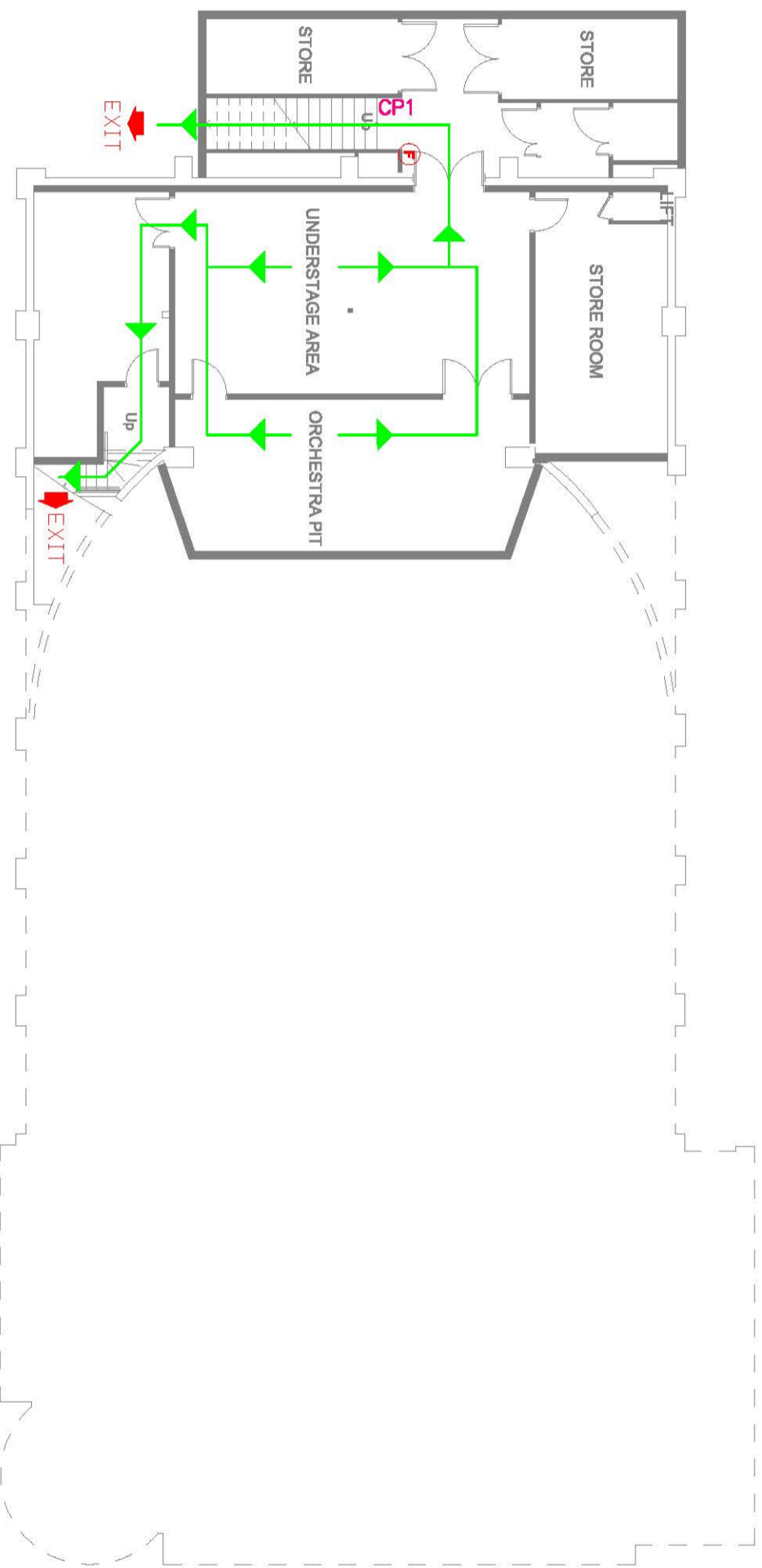


**WAIMAKARIRI**  
DISTRICT COUNCIL

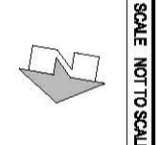
KEY

	EMERGENCY LIGHTING
	FIRE EXTINGUISHER
	HOSE REEL
	CALL POINT (ALARM)
	EMERGENCY EXIT PATH FOR COMMUNITY CENTRE
	EMERGENCY EXIT

- EVACUATION PROCEDURE
- Leave building by nearest exit.
  - Move quietly and quickly (do not run).
  - DO NOT REMAIN TO COLLECT PERSONAL ITEMS.
  - Assemble at your Assembly Point.
  - Remain at Assembly Point until told to disperse.



ISSUE	AMENDMENT	DRAWN	CHKD	APPD	DATE
E	REMAIN FROM ISSUE 01 NEW TOWN HALL BUILD	MSJ	DR	DR	09/15
F	CONVERTED TO AUTOCAD, BORDER REVISED, NEW EVACUATION PLANS	JR	-	-	09/15



SCALE NOT TO SCALE

**Rangiora Town Hall**  
Basement

PROJECT TITLE

**Evacuation Plan**

PLAN No.

**T620-35**

ISSUE SHEET

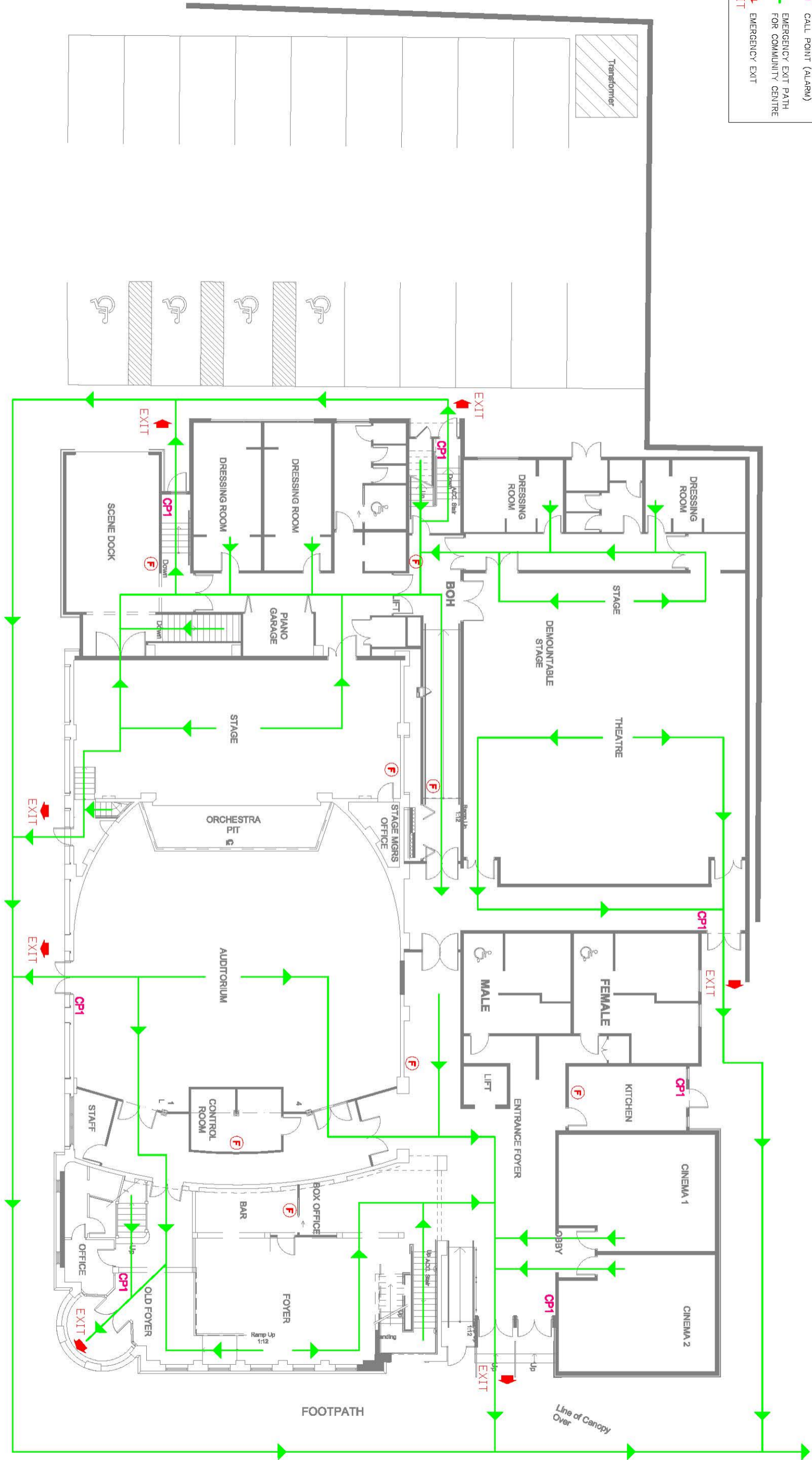
F 1

**KEY**

	EMERGENCY LIGHTING
	FIRE EXTINGUISHER
	HOSE REEL
	CALL POINT (ALARM)
	EMERGENCY EXIT PATH FOR COMMUNITY CENTRE
	EMERGENCY EXIT

**EVACUATION PROCEDURE**

- Leave building by nearest exit.
- Do not use lifts or escalators.
- DO NOT RE-ENTER TO COLLECT PERSONAL ITEMS.
- Assemble at your Assembly Point.
- Remain at Assembly Point until told to disperse.



ISSUE	AMENDMENT	DRAWN	CHKD	APPD	DATE	SCALE	NOT TO SCALE	SHEET TITLE
E	REMAIN FROM ISSUE 1 NEW TOWN HALL BUILD	RSJ	DR	DR	09/15			Rangiora Town Hall Ground Floor
F	CONVERTED TO NATIONAL BORDER SERVICES NEW EVACUATION PLANS	JR	-	-	09/15			

**PROJECT TITLE**

Evacuation Plan

**PLAN No.**

**T620-35**

ISSUE SHEET

F 2

